

2021

# CAT<sup>®</sup> ATTACHMENTS SMALL WHEEL LOADERS

924K, 930K, 938K, 926M, 930M, 938M



**Get more out of your equipment  
with Cat® attachments.**

Cat® attachments are designed and tested on each model to maximize machine performance.

**This brochure consists of  
Work Tool offerings for  
Small Wheel Loader models:**

- M-Series: 926M, 930M, 938M
- K-Series: 924K, 930K, 938K
- H-Series: 924H, 924HZ, 928HZ, 930H
- G-Series: 924G, 924GZ, 928GZ, 930G



Pages with **yellow** bars at the bottom contain parts for EAME only.

## INDEX

- COUPLER SOLUTIONS** .....4
- HOOKS** .....6
- BUCKET GROUND ENGAGING TOOLS (G.E.T.)** .....8
- BUCKETS**
  - PIN ON GENERAL PURPOSE .....11
  - PIN ON FLAT FLOOR .....12
  - PIN ON LIGHT MATERIAL .....12
  - PIN ON SAND AND GRAVEL .....13
  - CHARCOAL .....14
  - CHARCOAL ARM (FUSION) .....14
  - BAGASSE .....15
  - PIN ON HIGH CAPACITY .....16
  - PIN ON HIGH DUMP .....16
  - PIN ON MULTI PURPOSE .....17
  - PIN ON WASTE .....17
  - FUSION™ COUPLER KITS .....18
  - FUSION GENERAL PURPOSE .....19
  - FUSION FLAT FLOOR .....20
  - FUSION LIGHT MATERIAL .....20
  - FUSION MATERIAL HANDLING / SAND AND GRAVEL .....21
  - FUSION HIGH CAPACITY / HIGH DUMP .....22
  - FUSION SIDE DUMP .....23
  - FUSION MULTI-PURPOSE .....24
  - FUSION SKELETON .....25
  - HPL - WIDE (L50) GENERAL PURPOSE .....25
  - HPL - WIDE (L50) FLAT FLOOR .....26
  - HPL - WIDE (L50) SCANDANAVIAN GRADING .....27
  - HPL - WIDE (L50) LIGHT MATERIAL .....28
  - HPL - WIDE (L50) HIGH DUMP .....28

- PIPE AND POLE FORKS** .....29
- MATERIAL HANDLING ARM** .....29
- SNOW PUSHES / SNOW PLOWS**
  - FUSION STRAIGHT PUSHES .....30
  - BUCKET RECIEVER STRAIGHT PUSHES .....31
  - FUSION SNOW PLOWS .....32
- FORKS – MILLYARD / SEMI MILLYARD**
  - FUSION MILLYARD / SEMI MILLYARD FORKS .....34
  - PIN ON MILLYARD / SEMI MILLYARD FORKS .....35
- GRAPPLE FORKS**
  - FUSION GRAPPLE FORKS .....36
  - FUSION / PIN ON SORTING GRAPPLE FORKS .....36
  - HPL - WIDE (L50) SORTING GRAPPLE FORKS .....37
- LOG AND LUMBER CARRIAGES AND FORKS**
  - PIN ON CARRIAGES .....37
  - PIN ON FORKS .....37
  - FUSION CARRIAGE (NS, NF) .....38
  - FUSION FORKS .....38
  - FUSION CARRIAGE (NS, F) .....39
  - FUSION FORKS .....39
  - FUSION CARRIAGE (S, F) .....40
  - FUSION FORKS .....40
  - FUSION FLOAT LOCK-OUT KIT .....40
- RAKES**
  - FUSION RAKES .....41

- PALLET CARRIAGES AND FORKS**
  - FUSION CARRIAGE .....42
  - FUSION FORKS .....42
  - HPL - WIDE (L50) CARRIAGE .....43
  - HPL - WIDE (L50) OFFSET FORKS .....43
  - FUSION OFFSET FORKS .....44
  - FUSION CONSTRUCTION FORKS .....44
  - FUSION HEAVY DUTY CONSTRUCTION CARRIAGE .....45
  - FUSION HEAVY DUTY CONSTRUCTION FORKS .....45
- BROOMS**
  - ANGLE, MANUAL .....46
  - ANGLE, HYDRAULIC .....46
  - SPECIAL APPLICATION .....48
  - PICKUP .....49
  - KITS .....50
- COUPLERS** .....51

PART NUMBERS IN THIS BROCHURE ARE UP TO DATE AS OF JUNE 2021. PRICES IN THIS BROCHURE ARE ACCURATE AS OF APRIL 2021, BUT ARE SUBJECT TO CHANGE. PLEASE CONTACT YOUR LOCAL DEALER SALES REPRESENTATIVE TO REQUEST A CURRENT QUOTE.

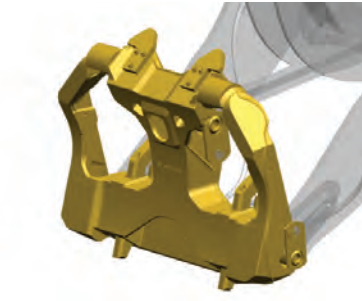
**Abbreviations:**

- BOCE: Bolt-on cutting edge
- BOT: Bolt-on teeth
- WOT: Weld-on teeth
- NS: Non-swinging
- NF: Non-floating
- S: Swinging
- F: Floating

# Cat® Coupler Solutions

## Fusion

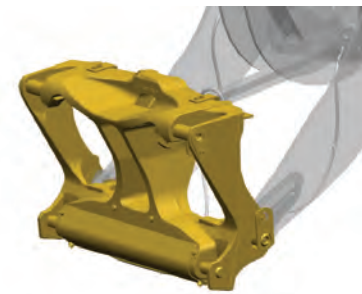
The Caterpillar patented Fusion coupler sits back close to the loader arms, minimizing offset, enabling increased machine performance. Optimal visibility in combination with the machine linkage makes it easier and safer to engage and disengage attachments. The Advanced wedge mechanism creates a tight, rattle-free fit, eliminating play and wear resulting in a long service life. Attachment exchangeability among a wide Cat loader range.



## Horizontal Pin Lock - Wide (L50)

The ISO coupler will pick up a range of Cat small wheel loader attachments. It will allow sale of small wheel loaders in mixed fleets. The coupler along with the profiled loader arms have been designed to give maximum visibility to the work tool, making it easier and safer to engage and disengage attachments. A simple joystick function allows for easy engagement and disengagement of the locking pins.

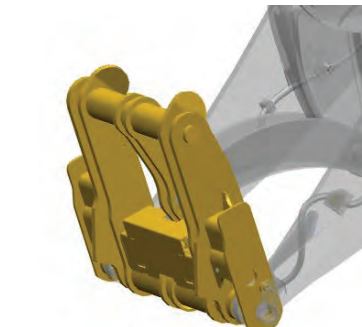
– Also known as Wide Coupler, Volvo, or Volvo L50 / Wide size.



## IT

Legacy interface bridges old and new small wheel loader machines into one fleet. Combine different machine products (backhoe loader, compact wheel loader and telehandler) with the same coupler for specific attachments. Aftermarket solution for existing fleet allowing end users to make use of their entire existing attachment portfolio. *\*Note only available for 924, 926 and 930.*

– Also known as Integrated Tool Carrier Coupler, IT14/28 and IT38 (larger IT).



## No Coupler Solution – Pin On

No coupler solution, maximum usage of machine lifting capabilities in the application. Often used when machine is 100% dedicated to the task at hand.



Fusion



Pin On



Horizontal Pin Lock - Wide (L50)

## SMALL WHEEL LOADERS ATTACHMENTS | 2021

## SMALL WHEEL LOADERS ATTACHMENTS | 2021

### Adapter Hooks

Applicable for attachment modifications allowing connection to IT couplers, or picking up IT tools on Fusion couplers.

#### HOOKS (FOR CONVERSION TO FUSION™)

Part Number	Weight lb (kg)	Description	Price
371-2400	330 (150)	Flat back	\$
317-5562	787 (357)	Blank	\$

#### CONVERSION ADAPTER (IT TO FUSION)

Part Number	Weight lb (kg)	Description	Price
589-6664	330 (150)	Adapter interface	\$

#### HOOKS (FOR USE WITH VERTICAL WEDGE LOCK COUPLERS)

Part Number	Weight lb (kg)	Description	Price
498-4390	493 (224)	Blank, VWL, 4"	\$

#### HOOKS (FOR CONVERSION TO IT COUPLER)

Part Number	Weight lb (kg)	Description	Price
109-6712	356 (162)	Blank, IT	\$
113-2677	155 (70)	Flat back, IT	\$

#### HOOKS (FOR USE WITH SW2003/6 COUPLERS)

Part Number	Weight lb (kg)	Description	Price
201-1397	150 (68)	Flat back, SA02003/6	\$



Hook, Blank, IT



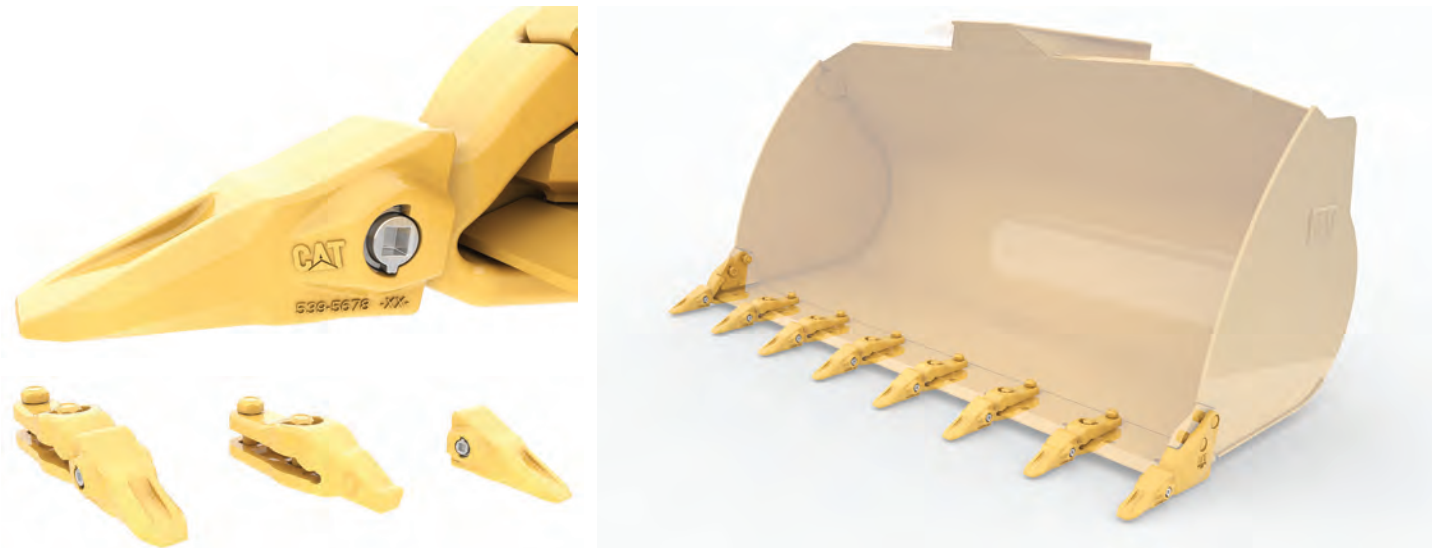
Hook, Blank, IT  
(Flat Back)



Fusion to IT  
Conversion Adapter

## SMALL WHEEL LOADERS ATTACHMENTS | 2021

**Cat Advansys™ Ground Engaging Tools (G.E.T.)** optimize performance with less installation downtime and more safety. This hammerless system features integrated retention components and streamlines retrofitting with adapters that drop into the same space as K series.



### ADVANSYS (G.E.T.)

Part Number	Model	Compatibility	Price
589-6111	ADAPTER GP-TIP	Check with your local dealer	\$

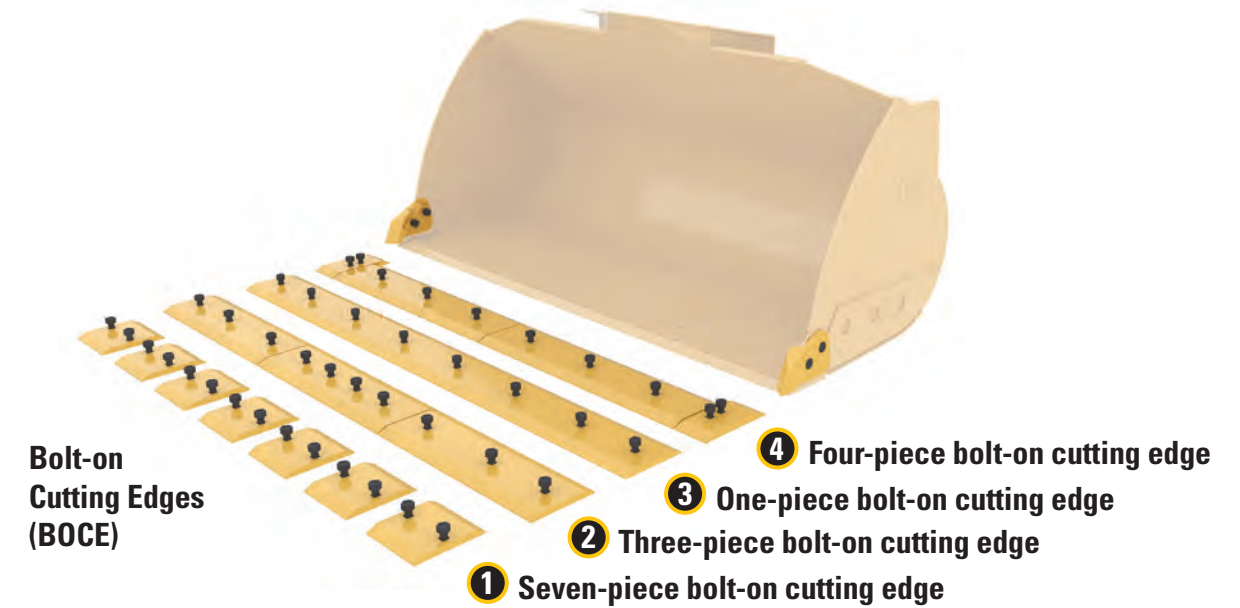
### ADVANSYS G.E.T. RETROFIT TABLE

Part Number	Description	Price
539-5600	Center Adapter	\$
8J-2933	Nut	\$
8J-2928	Bolt, Plow	\$
539-5601	Right Hand Adapter	\$
539-5602	Left Hand Adapter	\$
2J-3507	Nut	\$
4F-4042	Bolt, Plow	\$
4J-9058	Bolt, Plow	\$
539-5678	Tip, Gen. Purpose	\$

### BASE EDGES

Part Number	Width	Price
4E-0659	2524 – 2550 mm	\$
110-4712	2750 mm	\$

## SMALL WHEEL LOADERS ATTACHMENTS | 2021



### GROUND ENGAGING TOOLS (G.E.T.)

2455 mm WIDTH

Part Number	Weight lb (kg)	Description	Type	Price
116-9713	346 (157)	Adapters, bolt-on, set of 8	J250	\$
9W-8142	55 (25)	Tips, long, set of 8	J250	\$
9W-8143	40 (18)	Tips, short, set of 8	J250	\$

### GROUND ENGAGING TOOLS (G.E.T.)

2524 mm – 2550 mm WIDTH

Part Number	Weight lb (kg)	Description	Type	Price
547-6107	271 (123)	Cutting Edge, bolt-on, 1 piece	-	\$
472-1465	271 (123)	Cutting Edge, bolt-on, 3 pieces	-	\$
8E-4566*	365 (166)	Cutting Edge, bolt-on, 4 pieces	-	\$
8E-4568**	205 (93)	Segments, bolt-on, set of 7	-	\$
360-3284	154 (70)	Adapters, bolt-on, set of 8	J250	\$
116-9713	346 (157)	Adapters, bolt-on, set of 8	J250	\$
9W-8142	55 (25)	Tips, long, set of 8	J250	\$
251-5418	455 (206)	Cutting Edge, rubber, 100"	-	\$

\*Cannot be used with general purpose, sand and gravel or high dump buckets.

\*\*Requires 116-9713 or 360-3284 adapter group.

## SMALL WHEEL LOADERS ATTACHMENTS | 2021

## SMALL WHEEL LOADERS ATTACHMENTS | 2021

GROUND ENGAGING TOOLS (G.E.T.)			2750 mm WIDTH	
Part Number	Weight lb (kg)	Description	Teeth Type	Price
547-6108	291 (132)	Cutting Edge, bolt-on, 1 piece	-	\$
472-1468	293 (133)	Cutting Edge, bolt-on, 3 pieces	-	\$
345-2758*	319 (145)	Cutting Edge, bolt-on, 4 pieces	-	\$
116-9713**	346 (157)	Adapters, bolt-on, set of 8	J250	\$
360-3284	154 (70)	Adapters, bolt-on, set of 8	J250	\$
9W-8142	55 (25)	Tips, long, set of 8	J250	\$
9W-8143	40 (18)	Tips, short, set of 8	J250	\$

\*Cannot be used with high dump buckets.

\*\*Cannot be used with light material buckets.



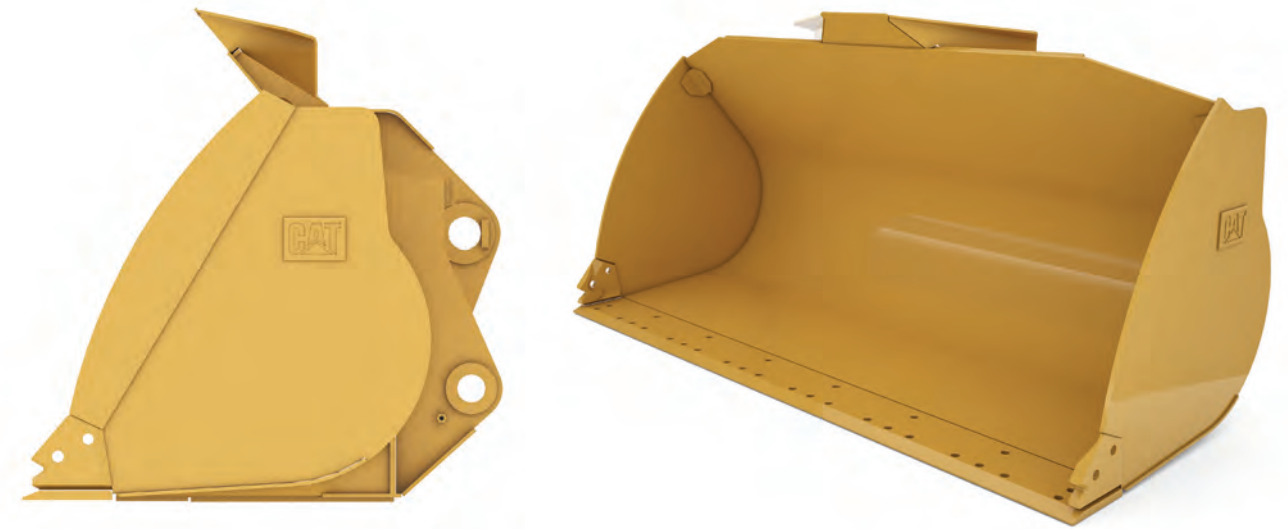
Bolt-on Adapters and Tips

GROUND ENGAGING TOOLS (G.E.T.)			3065 mm WIDTH	
Part Number	Weight lb (kg)	Description	Price	
547-6109	511 (232)	Cutting Edge, bolt-on, 1 piece	\$	
472-1471	512 (232)	Cutting Edge, bolt-on, 3 pieces	\$	

QUICK DISCONNECT KIT		
Part Number	Description	Price
455-7380	Twist to connect, size M45	\$
196-4191	Push to connect, size 12	\$



**General Purpose Performance Series Buckets** provide higher fill factors and material retention in load and carry applications, as well as grading, leveling and dumping in a wide variety of applications and materials.



GENERAL PURPOSE PERFORMANCE BUCKETS							PIN ON
Part Number	Capacity yd <sup>3</sup> (m <sup>3</sup> )	Weight lb (kg)	Length in (mm)	Width in (mm)	Height in (mm)	Edge Type	Price
345-2818	2.5 (1.9)	1788 (811)	46 (1168)	100 (2528)	49 (1240)	Base Edge	\$
417-4359	2.5 (1.9)	2072 (940)	49 (1240)	100 (2549)	50 (1260)	BOCE	\$
345-2820	2.7 (2.1)	1885 (855)	49 (1240)	100 (2528)	51 (1294)	Base Edge	\$
417-4921	2.7 (2.1)	2165 (982)	52 (1312)	100 (2549)	52 (1314)	BOCE	\$
345-2822	3.0 (2.3)	1967 (892)	51 (1303)	100 (2528)	53 (1338)	Base Edge	\$
417-4923	3.0 (2.3)	2249 (1020)	54 (1375)	100 (2549)	54 (1358)	BOCE	\$
345-2804	3.3 (2.5)	2156 (978)	51 (1303)	107 (2727)	53 (1336)	Base Edge	\$
345-2814	3.3 (2.5)	2156 (978)	54 (1365)	100 (2528)	54 (1382)	Base Edge	\$
345-2824	3.3 (2.5)	2154 (977)	54 (1365)	100 (2528)	54 (1382)	Base Edge	\$
417-4345	3.3 (2.5)	2443 (1108)	57 (1437)	100 (2549)	55 (1404)	BOCE	\$
345-2816	3.5 (2.7)	2134 (968)	54 (1365)	100 (2528)	56 (1418)	Base Edge	\$
345-2826	3.5 (2.7)	2251 (1021)	54 (1365)	107 (2727)	54 (1381)	Base Edge	\$
345-2828	3.8 (2.9)	2330 (1057)	56 (1414)	107 (2727)	62 (1572)	Base Edge	\$
417-4895*	3.3 (2.5)	2456 (1114)	54 (1375)	108 (2747)	54 (1358)	BOCE	\$
417-4927*	3.5 (2.7)	2553 (1158)	57 (1437)	108 (2747)	55 (1404)	BOCE	\$
417-4349*	3.8 (2.9)	2650 (1202)	59 (1486)	108 (2747)	57 (1439)	BOCE	\$

\*Compatible with 938K/M only

## SMALL WHEEL LOADERS ATTACHMENTS | 2021

**Performance Series Flat Floor, General Purpose Buckets** utilize a long flat floor that delivers improved results when back dragging and grading.



GENERAL PURPOSE FLAT FLOOR BUCKETS							PIN ON
Part Number	Capacity yd <sup>3</sup> (m <sup>3</sup> )	Weight lb (kg)	Length in (mm)	Width in (mm)	Height in (mm)	Edge Type	Price
490-3050	3.0 (2.3)	2260 (1025)	58 (1471)	100 (2532)	53 (1349)	BOCE	\$
493-1835	3.0 (2.3)	2436 (1105)	60 (1515)	100 (2539)	53 (1350)	WOT	\$
490-3060	3.3 (2.5)	2712 (1230)	54 (1375)	107 (2727)	54 (1358)	BOCE	\$
490-3070	3.8 (2.9)	2904 (1317)	59 (1486)	107 (2727)	57 (1439)	BOCE	\$
493-1845*	3.3 (2.5)	2637 (1196)	60 (1515)	108 (2738)	53 (1350)	WOT	\$
493-1855*	3.8 (2.9)	2829 (1283)	64 (1625)	108 (2738)	56 (1431)	WOT	\$

\*Compatible with 938K/M only

**Light Material Buckets** are specially designed for maximum efficiency and increased capacity when loading light, loosely-packed materials.



LIGHT MATERIAL BUCKETS							PIN ON
Part Number	Capacity yd <sup>3</sup> (m <sup>3</sup> )	Weight lb (kg)	Length in (mm)	Width in (mm)	Height in (mm)	Edge Type	Price
452-7416	3.9 (3)	2732 (1239)	58 (1462)	108 (2747)	54 (1369)	BOCE	\$
417-4905	4.6 (3.5)	2904 (1317)	62 (1565)	108 (2747)	57 (1448)	BOCE	\$
450-0250	5.0 (3.8)	3062 (1389)	65 (1647)	108 (2747)	58 (1471)	BOCE	\$
417-4942	5.5 (4.2)	3175 (1440)	68 (1735)	108 (2747)	61 (1538)	BOCE	\$
417-4350	6.5 (5)	3300 (1497)	68 (1735)	108 (2747)	66 (1687)	BOCE	\$
360-3332*	4.6 (3.5)	2895 (1313)	62 (1565)	108 (2747)	57 (1448)	BOCE	\$
450-0251*	5.0 (3.8)	3025 (1372)	65 (1647)	108 (2747)	58 (1471)	BOCE	\$
360-3333*	5.5 (4.2)	108 (2747)	68 (1735)	108 (2747)	61 (1538)	BOCE	\$
360-3334*	6.5 (5)	108 (2747)	68 (1735)	108 (2747)	66 (1687)	BOCE	\$

\*Compatible with 938K/M only

## SMALL WHEEL LOADERS ATTACHMENTS | 2021

**Sand and Gravel Buckets** are designed for aggregate handling in batch plant loader applications.



Additional wear plates on bottom and sides of the bucket improves life of the bucket in coarse aggregate applications.

SAND AND GRAVEL BUCKETS							PIN ON
Part Number	Capacity yd <sup>3</sup> (m <sup>3</sup> )	Weight lb (kg)	Length in (mm)	Width in (mm)	Height in (mm)	Edge Type	Price
430-3300	3.2 (2.5)	2262 (1026)	51 (1303)	108 (2750)	53 (1338)	Base Edge	\$
466-2252	3.2 (2.5)	2582 (1171)	51 (1375)	108 (2747)	54 (1359)	BOCE	\$
360-3309	3.5 (2.7)	2352 (1067)	56 (1414)	108 (2750)	54 (1382)	Base Edge	\$
466-2253	3.5 (2.7)	2668 (1210)	57 (1437)	108 (2747)	55 (1404)	BOCE	\$
360-3308*	3.5 (2.7)	2370 (1075)	54 (1365)	108 (2750)	54 (1381)	Base Edge	\$
466-2255*	3.5 (2.7)	2685 (1218)	57 (1437)	108 (2747)	55 (1404)	BOCE	\$
469-0193*	3.8 (2.9)	2454 (1113)	56 (1414)	108 (2750)	56 (1419)	Base Edge	\$
469-0194*	3.8 (2.9)	2758 (1251)	56 (1428)	108 (2743)	57 (1440)	BOCE	\$
360-3311	4.2 (3.2)	2529 (1147)	56 (1414)	108 (2750)	58 (1465)	Base Edge	\$
466-2254	4.2 (3.2)	2844 (1290)	59 (1486)	108 (2747)	59 (1488)	BOCE	\$
360-3310*	4.2 (3.2)	2527 (1146)	56 (1414)	108 (2750)	58 (1465)	Base Edge	\$
466-2256*	4.2 (3.2)	2842 (1289)	59 (1486)	108 (2747)	59 (1488)	BOCE	\$
396-2222*	4.5 (3.5)	3430 (1556)	62 (1578)	108 (2750)	61 (1537)	BOCE	\$

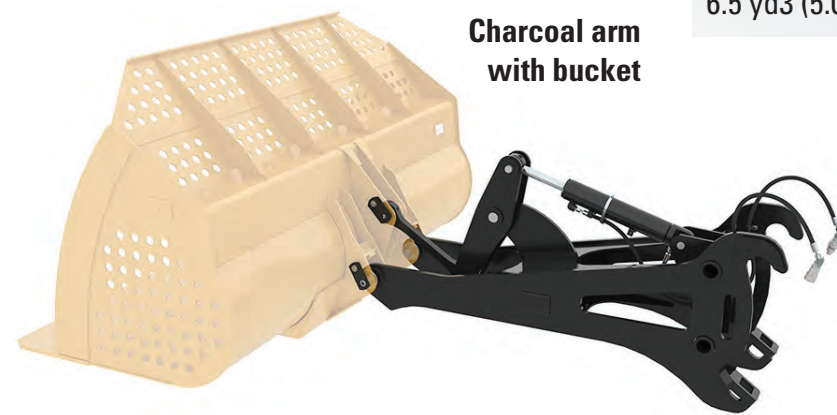
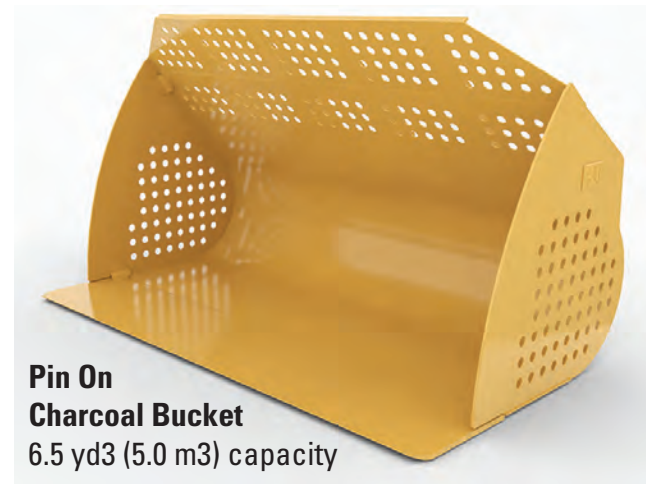
\*Compatible with 938K/M only

## SMALL WHEEL LOADERS ATTACHMENTS | 2021

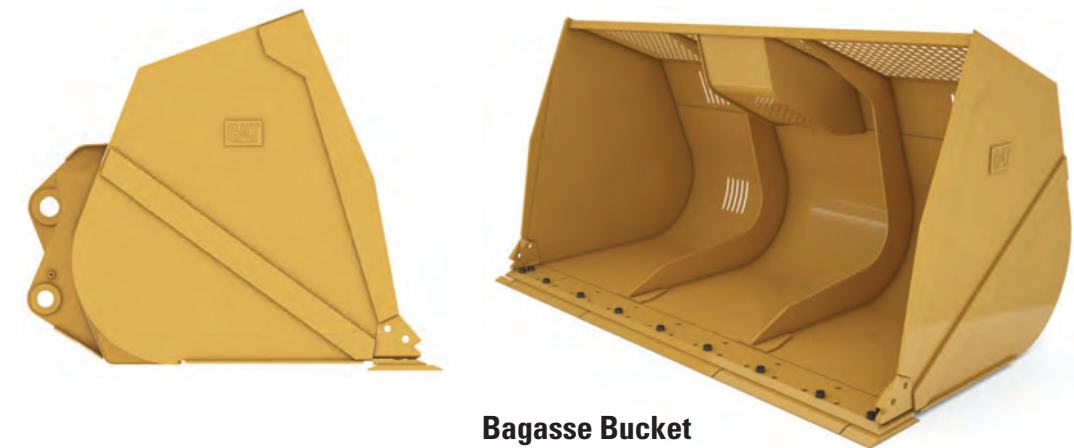
## SMALL WHEEL LOADERS ATTACHMENTS | 2021

**Charcoal Buckets and Charcoal Arm** Designed to allow efficient handling of charcoal.

**The Cat Bagasse Bucket** is exclusively designed to move bagasse in sugar cane mills. It optimizes material flow, while maximizing visibility.



CHARCOAL BUCKETS								PIN ON
Part Number	Capacity yd3 (m3)	Weight lb (kg)	Depth in (mm)	Width in (mm)	Height in (mm)	Edge Type	Machine	Price
449-1350	5.2 (3.4)	2480 (1125)	67 (1708)	121 (3062)	54 (1375)	Base Edge	924K	\$
426-5185	6.5 (5.0)	2826 (1282)	72 (1838)	121 (3062)	67 (1693)	Base Edge	930K	\$



CHARCOAL ARM						FUSION
Part Number	Weight lb (kg)	Depth in (mm)	Width in (mm)	Height in (mm)	Machine	Price
426-5203*	1880 (853)	98 (2495)	30 (758)	48 (1226)	924K, 930K	\$

\*Available in Brazil only

BAGASSE BUCKET							PIN ON
Part Number	Capacity yd3 (m3)	Depth in (mm)	Width in (mm)	Height in (mm)	Edge Type	Required Hydraulics	Price
568-7628*	7.8 (6.0)	72 (1820)	121 (3062)	63 (1589)	BOCE	None	\$

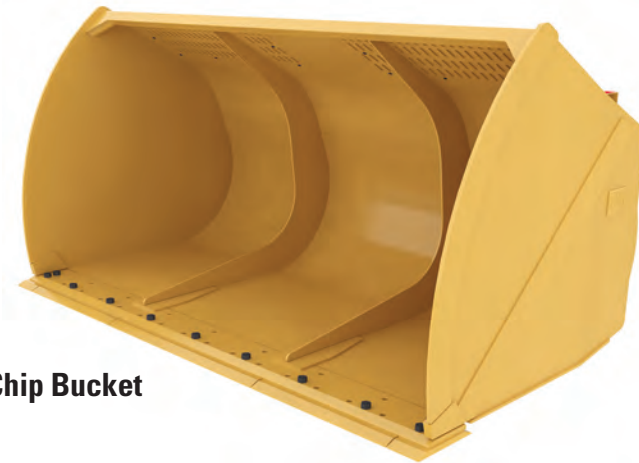
\*Available for Latin America. Ex-Factory only.



## SMALL WHEEL LOADERS ATTACHMENTS | 2021

### High Capacity / Wood Chip Buckets,

are for applications where low-density material is handled. Higher Capacity allows more productivity per cycle.

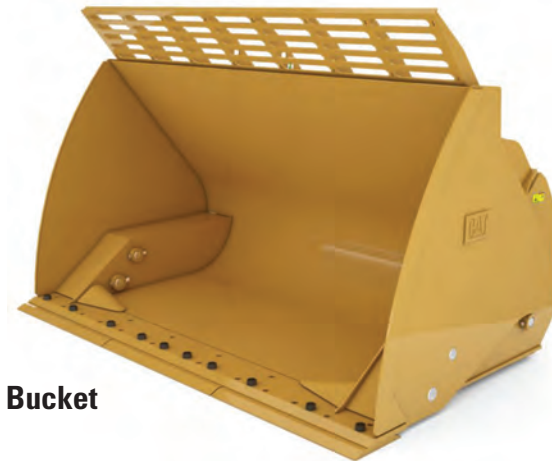


High Capacity / Wood Chip Bucket

HIGH CAPACITY / WOOD CHIP BUCKETS							PIN ON
Part Number	Capacity yd3 (m3)	Weight lb (kg)	Length in (mm)	Width in (mm)	Height in (mm)	Edge Type	Price
568-7631	7.8 (6.0)	3993 (1811)	74 (1889)	121 (3062)	64 (1614)	BOCE	\$
568-9164	8.9 (6.8)	4277 (1940)	74 (1889)	133 (3382)	65 (1640)	BOCE	\$

### High Dump Buckets feature greatly increased dump height

over standard material-handling buckets. Whether loading trucks, feeding compactors or just working in the pile, high dump buckets offer the performance you need.



High Dump Bucket

HIGH DUMP BUCKETS								PIN ON
Part Number	Capacity yd3 (m3)	Weight lb (kg)	Length in (mm)	Width in (mm)	Height in (mm)	Edge Type	Required Hydraulics	Price
461-1430	3.9 (3)	3834 (1739)	70 (1770)	100 (2528)	66 (1663)	BOCE	3rd Function	\$
461-7080	4.6 (3.5)	4028 (1827)	70 (1770)	107 (2716)	67 (1706)	BOCE	3rd Function	\$
464-2890	5.4 (4.1)	4760 (2159)	72 (1835)	119 (3032)	68 (1721)	BOCE	3rd Function	\$
461-7085	5.4 (4.1)	4753 (2156)	72 (1835)	119 (3032)	68 (1721)	BOCE	3rd Function	\$
464-2895	6.5 (5)	5573 (2528)	77 (1954)	119 (3032)	73 (1863)	BOCE	3rd Function	\$
461-7060	6.5 (5)	4974 (2256)	77 (1954)	119 (3031)	73 (1864)	BOCE	3rd Function	\$

## SMALL WHEEL LOADERS ATTACHMENTS | 2021

**Multi-Purpose Buckets** have excellent versatility for re-handling, clamping, dozing, grading, leveling and dumping.

Multi-Purpose Bucket



MULTI-PURPOSE BUCKETS								PIN ON
Part Number	Capacity yd3 (m3)	Weight lb (kg)	Length in (mm)	Width in (mm)	Height in (mm)	Edge Type	Required Hydraulics	Price
525-7237	2.7 (2.1)	3172 (1439)	49 (1251)	100 (2550)	50 (1274)	BOCE	3rd Function	\$
537-8665*	3.5 (2.7)	3499 (1587)	56 (1415)	108 (2750)	53 (1337)	BOCE	3rd Function	\$

\*Compatible with 938K/M only



Waste Handling  
Bucket

Available in different styles: waste handling, doze and load and carrying

WASTE HANDLING BUCKETS								PIN ON
Part Number	Capacity yd3 (m3)	Length in (mm)	Width in (mm)	Height in (mm)	Edge Type	Required Hydraulics	Price	
449-4365	4.5 (3.4)	82 (2089)	108 (2743)	56 (1431)	BASE	3rd Function	\$	
449-4371	5 (3.8)	85 (2159)	114 (2886)	57 (1440)	BASE	3rd Function	\$	
439-1335	5.5 (4.2)	56 (1435)	108 (2743)	76 (1925)	BOCE	None	\$	
434-8968	5.9 (4.6)	71 (1790)	108 (2743)	63 (1605)	BOCE	None	\$	
438-9377	5.6 (4.6)	56 (1435)	115 (2927)	77 (1964)	BOCE	None	\$	
434-3349	6.5 (4.9)	71 (1807)	114 (2886)	66 (1640)	BOCE	None	\$	

## SMALL WHEEL LOADERS ATTACHMENTS | 2021

QUICK COUPLER KIT			FUSION
Part Number	Description	Machines	Price
374-5790	Electro-hydraulic coupler actuation system	924K, 926M, 930K, 930M	\$
374-5791	Electro-hydraulic coupler actuation system	938K, 938M	\$

COUPLER READY KIT		FUSION
Part Number	Machines	Price
447-4892	924K	\$
447-4893	926M, 930K, 930M	\$
447-4895	938K, 938M	\$

## SMALL WHEEL LOADERS ATTACHMENTS | 2021



**General Purpose Performance Series** buckets provide higher fill factors and material retention in load and carry applications, as well as grading, leveling and dumping in a wide variety of applications and materials.

GENERAL PURPOSE PERFORMANCE BUCKETS							FUSION
Part Number	Capacity yd <sup>3</sup> (m <sup>3</sup> )	Weight lb (kg)	Length in (mm)	Width in (mm)	Height in (mm)	Edge Type	Price
345-2418	2.5 (1.9)	1709 (775)	44 (1109)	100 (2532)	49 (1235)	Base Edge	\$
417-4919	2.5 (1.9)	2008 (911)	47 (1181)	100 (2549)	50 (1260)	BOCE	\$
360-3320	2.7 (2.1)	1819 (825)	47 (1181)	100 (2540)	51 (1289)	Base Edge	\$
360-3321	2.7 (2.1)	2101 (953)	49 (1253)	100 (2549)	52 (1314)	BOCE	\$
360-3322	3 (2.3)	1903 (863)	49 (1244)	100 (2540)	53 (1333)	Base Edge	\$
360-3323	3 (2.2)	2143 (972)	52 (1316)	100 (2549)	54 (1358)	BOCE	\$
345-2424	3.3 (2.5)	2121 (962)	51 (1306)	99 (2520)	54 (1378)	Base Edge	\$
345-2784	3.3 (2.5)	2123 (963)	49 (1244)	107 (2727)	52 (1333)	Base Edge	\$
417-4355	3.3 (2.5)	2432 (1103)	52 (1316)	108 (2747)	54 (1358)	BOCE	\$
417-4925	3.3 (2.5)	2411 (1094)	54 (1378)	100 (2549)	55 (1404)	BOCE	\$
345-2426	3.5 (2.7)	2220 (1007)	51 (1306)	107 (2727)	54 (1378)	Base Edge	\$
345-2427	3.5 (2.7)	2542 (1153)	54 (1378)	107 (2727)	55 (1404)	BOCE	\$
360-3336	3.5 (2.7)	2121 (962)	51 (1306)	100 (2540)	56 (1414)	Base Edge	\$
345-2428	3.8 (2.9)	2297 (1042)	56 (1414)	107 (2727)	56 (1414)	Base Edge	\$
417-4929	3.8 (2.9)	2602 (1180)	56 (1427)	108 (2747)	57 (1439)	BOCE	\$

General Purpose Performance Series Buckets



## SMALL WHEEL LOADERS ATTACHMENTS | 2021

**Performance Series Flat Floor, General Purpose Buckets** utilize a long flat floor that delivers improved results when back dragging and grading.



GENERAL PURPOSE FLAT FLOOR							FUSION
Part Number	Capacity yd <sup>3</sup> (m <sup>3</sup> )	Weight lb (kg)	Length in (mm)	Width in (mm)	Height in (mm)	Edge Type	Price
491-0515	3 (2.3)	2403 (1090)	53 (1343)	100 (2532)	54 (1358)	BOCE	\$
491-0525	3.3 (2.5)	2657 (1205)	53 (1344)	107 (2727)	54 (1358)	BOCE	\$
491-0535	3 (2.3)	2436 (1105)	57 (1445)	100 (2539)	53 (1350)	BOCE	\$
493-1840	3 (2.3)	2344 (1063)	58 (1483)	100 (2539)	53 (1350)	WOT	\$
493-1850	3.3 (2.5)	2579 (1170)	58 (1483)	108 (2738)	53 (1350)	WOT	\$
493-1860	3.8 (2.9)	2771 (1257)	63 (1594)	108 (2738)	57 (1430)	WOT	\$



### Specially designed Light Material Buckets

have maximum efficiency and increased capacity when loading light, loosely-packed materials.

LIGHT MATERIAL BUCKETS							FUSION
Part Number	Capacity yd <sup>3</sup> (m <sup>3</sup> )	Weight lb (kg)	Length in (mm)	Width in (mm)	Height in (mm)	Edge Type	Price
452-7417	3.9 (3)	2690 (1220)	55 (1404)	108 (2747)	54 (1369)	BOCE	\$
417-4935	4.6 (3.5)	2873 (1303)	59 (1506)	108 (2747)	57 (1449)	BOCE	\$
450-0252	5 (3.8)	3016 (1368)	63 (1588)	108 (2747)	58 (1478)	BOCE	\$
417-4342	5.5 (4.2)	3172 (1439)	66 (1676)	108 (2747)	61 (1538)	BOCE	\$
417-4950	6.5 (5)	3311 (1502)	66 (1676)	108 (2747)	66 (1687)	BOCE	\$

## SMALL WHEEL LOADERS ATTACHMENTS | 2021

MATERIAL HANDLING BUCKET							FUSION
Part Number	Capacity yd <sup>3</sup> (m <sup>3</sup> )	Weight lb (kg)	Length in (mm)	Width in (mm)	Height in (mm)	Edge Type	Price
446-0738	2.0 (1.5)	2189 (993)	73 (1861)	73 (1861)	50 (1272)	BOCE	\$

### Sand and Gravel Buckets

are designed for aggregate handling in batch plant loader applications.



Sand and Gravel Bucket

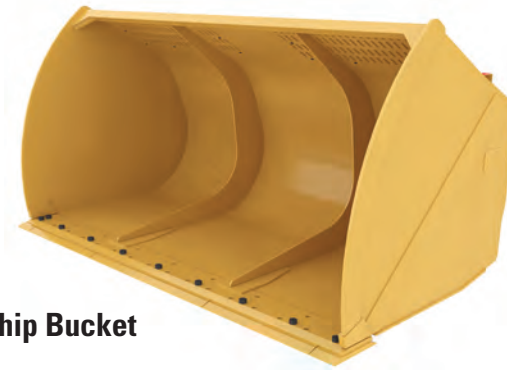
SAND AND GRAVEL BUCKETS							FUSION
Part Number	Capacity yd <sup>3</sup> (m <sup>3</sup> )	Weight lb (kg)	Length in (mm)	Width in (mm)	Height in (mm)	Edge Type	Price
451-1403	3.3 (2.5)	2125 (964)	50 (1262)	108 (2750)	53 (1333)	Base Edge	\$
451-1409	3.3 (2.5)	2533 (1149)	52 (1317)	108 (2747)	54 (1359)	BOCE	\$
451-1404	3.5 (2.7)	2220 (1007)	52 (1324)	108 (2750)	54 (1378)	Base Edge	\$
451-1410	3.5 (2.7)	2639 (1197)	54 (1379)	108 (2747)	55 (1404)	BOCE	\$
469-0191	3.8 (2.9)	2421 (1098)	55 (1384)	108 (2750)	56 (1419)	Base Edge	\$
469-0192	3.8 (2.9)	2725 (1236)	56 (1428)	108 (2743)	57 (1440)	BOCE	\$
451-1405	4.2 (3.2)	2487 (1128)	54 (1373)	108 (2750)	58 (1462)	Base Edge	\$
451-1411	4.2 (3.2)	2789 (1265)	56 (1426)	108 (2747)	59 (1488)	BOCE	\$

## SMALL WHEEL LOADERS ATTACHMENTS | 2021

## SMALL WHEEL LOADERS ATTACHMENTS | 2021

### High Capacity / Wood Chip Buckets

for Cat wheel loaders have a proven design with lower weight compared to competitors and can carry materials with 20% more density than others.



High Capacity / Wood Chip Bucket

HIGH CAPACITY / WOOD CHIP BUCKETS							FUSION	
Part Number	Capacity yd3 (m3)	Weight lb (kg)	Length in (mm)	Width in (mm)	Height in (mm)	Edge Type	Price	
568-9161	7.8 (6)	4079 (1850)	78 (1982)	121 (3062)	64 (1614)	BOCE	\$	
568-9168	8.9 (6.8)	4361 (1978)	78 (1982)	133 (3382)	65 (1640)	BOCE	\$	

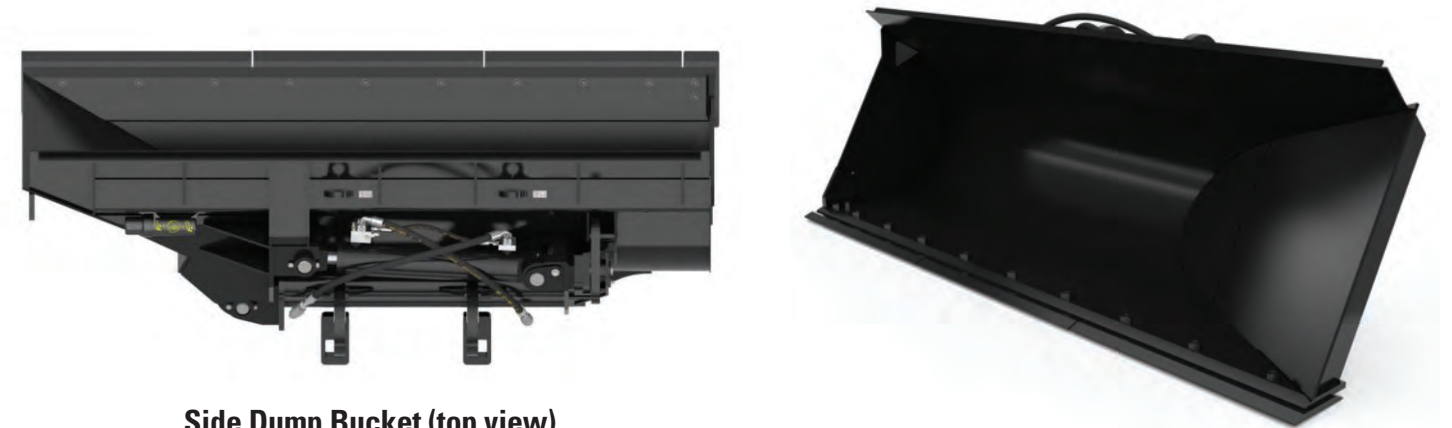
**High Dump Buckets** feature greatly increased dump height over standard material-handling buckets. Whether loading trucks, feeding compactors or just working in the pile, high dump buckets offer the performance you need.



High Dump Bucket

HIGH DUMP BUCKETS						FUSION		
Part Number	Capacity yd3 (m3)	Weight lb (kg)	Length in (mm)	Width in (mm)	Height in (mm)	Required Hydraulics	Edge Type	Price
473-6945	3.9 (3)	3763 (1707)	67 (1710)	100 (2528)	66 (1663)	3rd Function	BOCE	\$
473-6942	4.6 (3.5)	3962 (1797)	70 (1770)	107 (2728)	67 (1706)	3rd Function	BOCE	\$
476-9305	5.4 (4.1)	4687 (2126)	70 (1775)	119 (3032)	68 (1721)	3rd Function	BOCE	\$
476-9308	6.5 (5.0)	4910 (2227)	76 (1922)	119 (3032)	73 (1863)	3rd Function	BOCE	\$

**Side Dump Buckets** can dump forward as a standard bucket, or to the side. This functionality makes it uniquely suited to work in urban areas, small job sites, or other congested work environments.



Side Dump Bucket (top view)

SIDE DUMP BUCKETS								FUSION	
Part Number	Capacity yd3 (m3)	Weight lb (kg)	Length in (mm)	Width in (mm)	Height in (mm)	Edge Type	Dump Direction	Price	
571-8457*	2.5 (1.9)	3728 (1691)	55 (1388)	122 (3105)	43 (1097)	BOCE	Left	\$	
461-2391*	2.5 (1.9)	3320 (1506)	55 (1387)	122 (3105)	43 (1097)	BOCE	Right	\$	

\*Requires third valve on machine



FUSION BUCKETS – SIDE DUMP

## SMALL WHEEL LOADERS ATTACHMENTS | 2021



**Multi-Purpose Buckets** for Cat small wheel loaders offer excellent versatility by enabling one work tool to do the job of many. This bucket is ideal for material handling, clamping, grading, leveling and grasping irregularly shaped objects.



MULTI-PURPOSE BUCKETS								FUSION
Part Number	Capacity yd <sup>3</sup> (m <sup>3</sup> )	Weight lb (kg)	Length in (mm)	Width in (mm)	Height in (mm)	Edge Type	Required Hydraulics	Price
362-0901	2.7 (2.1)	3095 (1404)	61 (1537)	61 (1537)	49 (1254)	BOCE	3rd Function	\$
362-0902	2.7 (2.1)	3124 (1417)	48 (1213)	103 (2605)	50 (1274)	BOCE	3rd Function	\$
527-9408	3.5 (2.7)	3444 (1562)	53 (1343)	108 (2750)	53 (1337)	BOCE	3rd Function	\$

## SMALL WHEEL LOADERS ATTACHMENTS | 2021

**Skeleton Bucket** is primarily used to remove and separate rocks and larger debris from soil and sand.



Skeleton Bucket

SKELETON BUCKET							FUSION
Part Number	Capacity yd <sup>3</sup> (m <sup>3</sup> )	Weight lb (kg)	Length in (mm)	Width in (mm)	Height in (mm)	Edge Type	Price
591-3866	2.5 (1.9)	2423 (1099)	46 (1176)	100 (2532)	51 (1031)	Base Edge	\$



Performance Series Buckets



**General Purpose Performance Series Buckets** provide higher fill factors and material retention in load and carry applications, as well as grading, leveling and dumping in a wide variety of materials.

GENERAL PURPOSE PERFORMANCE SERIES BUCKETS							ISO
Part Number	Capacity yd <sup>3</sup> (m <sup>3</sup> )	Weight lb (kg)	Length in (mm)	Width in (mm)	Height in (mm)	Edge Type	Price
360-3256	2.7 (2.1)	1748 (793)	47 (1195)	100 (2532)	51 (1294)	Base Edge	\$
360-3257	3 (2.3)	1832 (831)	50 (1258)	100 (2532)	53 (1338)	Base Edge	\$
371-2390	3.3 (2.5)	2022 (917)	50 (1258)	107 (2727)	53 (1336)	Base Edge	\$
360-3258	3.5 (2.7)	2119 (961)	50 (1258)	107 (2727)	54 (1381)	Base Edge	\$
371-2391	3.8 (2.9)	2198 (997)	54 (1369)	107 (2727)	56 (1417)	Base Edge	\$

## SMALL WHEEL LOADERS ATTACHMENTS | 2021

**Performance Series Flat Floor, General Purpose Buckets** utilize a long flat floor that delivers improved results when back dragging and grading.



General Purpose Performance Series Flat Floor

GENERAL PURPOSE PERFORMANCE SERIES FLAT FLOOR BUCKETS							HPL - WIDE (L50)
Part Number	Capacity yd <sup>3</sup> (m <sup>3</sup> )	Weight lb (kg)	Length in (mm)	Width in (mm)	Height in (mm)	Edge Type	Price
482-6970	3 (2.3)	2319 (1052)	52 (1331)	100 (2532)	54 (1358)	BOCE	\$
491-0510	3 (2.3)	2260 (1025)	58 (1471)	100 (2539)	53 (1349)	WOT	\$
482-6950	3.3 (2.5)	2542 (1153)	52 (1331)	107 (2727)	54 (1358)	BOCE	\$
491-0520	3.3 (2.5)	2467 (1119)	58 (1470)	108 (2738)	53 (1350)	WOT	\$
482-6960	3.8 (2.9)	2734 (1240)	57 (1441)	107 (2727)	57 (1439)	BOCE	\$
491-0530	3.8 (2.9)	2659 (1206)	62 (1581)	108 (2738)	56 (1430)	WOT	\$

BOCE - Bolt on cutting edge  
WOT - Welded on teeth

## SMALL WHEEL LOADERS ATTACHMENTS | 2021

**Scandinavian Style Grading Buckets** have a long, flat floors giving the operator complete visibility of the cutting edge. The shape of the bucket provides flexibility to scoop material, level or backfill.



Grading Buckets



GRADING BUCKETS				HPL - WIDE (L50)		
Part Number	Capacity yd <sup>3</sup> (m <sup>3</sup> )	Weight lb (kg)	Length in (mm)	Width in (mm)	Height in (mm)	Price
513-0277	2.4 (1.8)	2132 (967)	65 (1640)	102 (2600)	38 (972)	\$
513-0159	2.5 (1.9)	2198 (997)	65 (1640)	106 (2700)	38 (972)	\$
513-0115	2.6 (2)	2330 (1057)	65 (1640)	114 (2900)	38 (972)	\$

**Bolt-On Spill Guards** increase capacity and help prevent spillage over adverse machine travel conditions.



Bolt-On Spill Guard

SPILL GUARD					HPL - WIDE (L50)
Part Number	Weight lb (kg)	Length in (mm)	Width in (mm)	Height in (mm)	Price
519-1916	258 (117)	58 (1475)	115 (2909)	27 (675)	\$

## SMALL WHEEL LOADERS ATTACHMENTS | 2021

### Light Material Performance Series Buckets

leverage many of the same features found in the General Purpose Bucket but with higher volume capacities to handle less dense materials such as top soil, fertilizer, wood chips and many more.



Light Material  
Performance Series Bucket

#### LIGHT MATERIAL PERFORMANCE SERIES BUCKETS HPL - WIDE (L50)

Part Number	Capacity yd <sup>3</sup> (m <sup>3</sup> )	Weight lb (kg)	Length in (mm)	Width in (mm)	Height in (mm)	Edge Type	Price
575-9686	4.6 (3.5)	2747 (1246)	60 (1511)	108 (2750)	57 (1449)	BOCE	\$
575-9687	5.5 (4.2)	3025 (1372)	66 (1681)	108 (2750)	57 (1449)	BOCE	\$
575-9688	6.5 (5)	3153 (1430)	66 (1681)	108 (2750)	66 (1687)	BOCE	\$

**High Dump Buckets** feature greatly increased dump height over standard material-handling buckets. Whether loading trucks, feeding compactors or just working in the pile, high dump buckets offer the performance you need.

High Dump Bucket



#### HIGH DUMP BUCKETS HPL - WIDE (L50)

Part Number	Capacity yd <sup>3</sup> (m <sup>3</sup> )	Weight lb (kg)	Length in (mm)	Width in (mm)	Height in (mm)	Required Hydraulics	Edge Type	Price
473-6951	3.9 (3)	3946 (1790)	70 (1767)	100 (2550)	66 (1663)	3rd Function	BOCE	\$
473-6948	4.6 (4.1)	4140 (1878)	70 (1767)	108 (2750)	67 (1706)	3rd Function	BOCE	\$
476-9311	5.4 (2.5)	5106 (2316)	72 (1832)	121 (3060)	68 (1721)	3rd Function	BOCE	\$
476-9314	6.5 (5)	5324 (2415)	77 (1952)	121 (3060)	73 (1863)	3rd Function	BOCE	\$

## SMALL WHEEL LOADERS ATTACHMENTS | 2021



**Cat Pipe and Pole Forks** are designed and built for use in oil and gas field drilling, pipe line construction and above-ground utilities work.



**The Extendable Material Handling Arm** is used in industrial, construction and agricultural applications, to pick-up, carry and load a variety of materials and equipment

#### FORKS – PIPE AND POLE FUSION

Part Number	Weight lb (kg)	Overall Width in (mm)	Overall Length in (mm)	Tine Length in (mm)	Max Opening Between Clamp & Tines in (mm)	Load Capacity lb (kg)	Required Hydraulics	Price
496-1905	3505 (1590)	101 (2560)	83 (2100)	60 (1525)	30 (760)	5159 (2340)	3rd Function*	\$
510-5060	4301 (1951)	101 (2560)	95 (2410)	72 (1830)	30 (760)	7401 (3357)	3rd Function*	\$

\*Requires "Twist to connect" QDs.

#### MATERIAL HANDLING ARM SWL

Part Number	Weight lb (kg)	Overall Width in (mm)	Retracted Length in (mm)	Extended Length in (mm)	Number of Adjustments	Maximum Load Rating lb (kg)	Maximum Horizontal Reach in (mm)	Price
510-5071*	900 (408)	25 (646)	79 (2007)	155 (3941)	3	4619 (2095)	155 (3941)	\$
510-5092**	1076 (488)	30 (758)	103 (2603)	166 (4203)	3	5362 (2432)	166 (4208)	\$

\*Fusion

\*\*ISO

## SMALL WHEEL LOADERS ATTACHMENTS | 2021

**Straight Snow Pushes** with bucket receiver are designed to mount to the machine without having to remove the machine bucket. This is ideal for machines that are not equipped with a quick coupler option. The bucket receiver snow push is secured to the machine by sliding the cutting edge of the bucket into the receiver arms, then fastening chains around the bucket of the machine. The chains are easily tightened by using the over center load binders that are attached to the snow push. For use with any bucket that does not have a cutting edge or teeth.

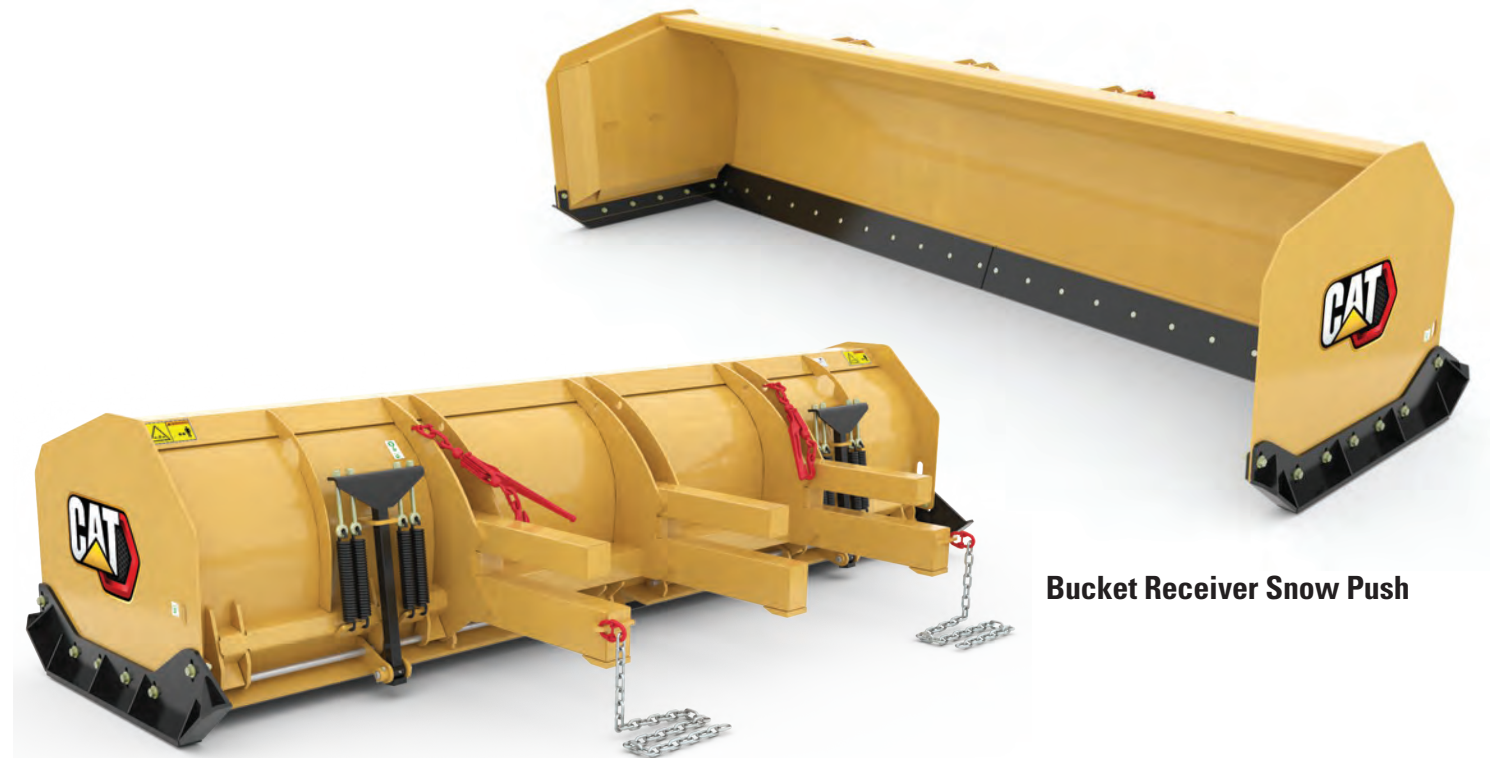


**Straight Snow Push**

STRAIGHT SNOW PUSHES				FUSION		
MODEL	12 ft (3.66 m)	12 ft (3.66 m)	14 ft (4.27 m)	14 ft (4.27 m)	16 ft (4.88 m)	16 ft (4.88 m)
Part Number	477-9891	508-8310	477-9893	508-8315	477-9897	508-8320
Working Width - in (mm)	144 (3658)	144 (3658)	168 (4267)	168 (4267)	192 (4877)	192 (4877)
Overall Width - in (mm)	151 (3829)	151 (3829)	175 (4439)	175 (4439)	199 (5048)	199 (5048)
Overall Height - in (mm)	44 (1128)	44 (1128)	44 (1128)	44 (1128)	44 (1128)	44 (1128)
Length - in (mm)	62 (1574)	62 (1574)	62 (1574)	62 (1574)	62 (1574)	62 (1574)
Weight - lb (kg)	2932 (1330)	2932 (1330)	3177 (1441)	3177 (1441)	3422 (1552)	3422 (1552)
Trip Edge	Yes	Yes	Yes	Yes	Yes	Yes
Edge Height - in (mm)	8 (194)	8 (194)	8 (194)	8 (194)	8 (194)	8 (194)
Edge Type	Steel	Rubber	Steel	Rubber	Steel	Rubber
Machine	CWL / SWL	CWL / SWL	SWL	SWL	SWL	SWL
Price	\$	\$	\$	\$	\$	\$
Cutting Edge	482-7664*	499-3627*	482-7629*	499-3628*	482-7618*	499-3629*
Price	\$	\$	\$	\$	\$	\$

\*Order quantity of two.

## SMALL WHEEL LOADERS ATTACHMENTS | 2021



**Bucket Receiver Snow Push**

STRAIGHT SNOW PUSHES				BUCKET RECEIVER		
MODEL	12 ft (3.66 m)	12 ft (3.66 m)	14 ft (4.27 m)	14 ft (4.27 m)	16 ft (4.88 m)	16 ft (4.88 m)
Working Width - in (mm)	144 (3658)	144 (3658)	168 (4267)	168 (4267)	192 (4877)	192 (4877)
Overall Width - in (mm)	151 (3829)	151 (3829)	175 (4439)	175 (4439)	199 (5048)	199 (5048)
Overall Height - in (mm)	43 (1086)	43 (1086)	43 (1086)	43 (1086)	43 (1086)	43 (1086)
Length - in (mm)	77 (1945)	77 (1945)	77 (1945)	77 (1945)	77 (1945)	77 (1945)
Weight - lb (kg)	2635 (1195)	2787 (1264)	2879 (1306)	3031 (1375)	3113 (1412)	3276 (1486)
Trip Edge	Yes	Yes	Yes	Yes	Yes	Yes
Trip Edge Height - in (mm)	8 (194)	8 (194)	8 (194)	8 (194)	8 (194)	8 (194)
Trip Edge Type	Rubber	Steel	Rubber	Steel	Rubber	Steel
Part Number	508-8325	477-9892	508-8330	477-9894	508-8335	477-9898
Price	\$	\$	\$	\$	\$	\$
Cutting Edge	489-3929*	482-7664*	499-3628*	482-7629*	499-3629*	482-7618*
Price	\$	\$	\$	\$	\$	\$

\*Order quantity of two.

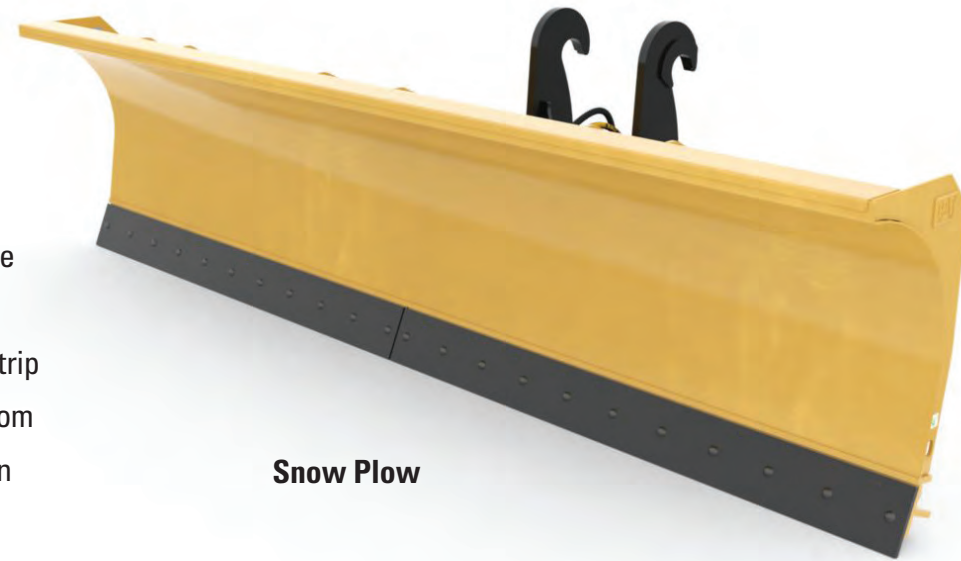


## SMALL WHEEL LOADERS ATTACHMENTS | 2021

## SMALL WHEEL LOADERS ATTACHMENTS | 2021

### Cat Snow Plows

are designed for snow removal applications in parking lots, drive-ways, airport runways and storage lots. The plow is designed to scrape the surface and can be angled to windrow material to one side. The trip edge system protects equipment from unseen obstacles by retracting when objects such as a manhole cover or large rocks are hit.



Snow Plow

SNOW PLOWS				FUSION		
MODEL	10 ft (3 m)	12 ft (3.7 m)	12 ft (3.7 m)	12 ft (3.7 m)	14 ft (4.3 m)	14 ft (4.3 m)
Part Number	479-8098	479-8108	315-6675	489-7688	479-8118	315-6676
Width – in (mm)	120 (3048)	144 (3658)	146 (3696)	146 (3696)	168 (4267)	168 (4265)
Blade Height – in (mm)	42 (1073)	42 (1073)	42 (1073)	42 (1073)	42 (1073)	42 (1073)
Length – in (mm)	70 (1775)	70 (1775)	70 (1775)	70 (1775)	70 (1775)	70 (1775)
Weight – lb (kg)	3062 (1389)	3362 (1525)	2867 (1300)	2932 (1330)	3362 (1525)	3775 (1712)
Trip Edge Type	Steel	Steel	Steel	Steel	Steel	Steel
Trip Edge Height – in (mm)	7.6 (194)	7.6 (194)	7.6 (194)	7.6 (194)	7.6 (194)	7.6 (194)
Required Hydraulics	3rd Function	3rd Function	3rd Function	3rd Function	3rd Function	3rd Function
Hydraulic Angling Left/Right Over Center	35 degrees	35 degrees	25 degrees	35 degrees	35 degrees	25 degrees
Price	\$	\$	\$	\$	\$	\$

Cat® Snow Plows



## SMALL WHEEL LOADERS ATTACHMENTS | 2021

**Millyard Forks** maximize the ability to fill the fork at every pass. They efficiently load and unload from trucks, capably sort pole and decking materials, effectively feed sawmills and handle other long or bulky material.



**Fusion  
Millyard Forks**

**Semi Millyard Forks** feature a top clamp that closes between the tines allowing the forks to close onto loads as small as a single log. Stack, carry and sort piles of lumber more efficiently than ever.



**Fusion  
Semi Millyard Forks**

<b>FORKS STYLE</b>	<b>Millyard</b>	<b>Semi Millyard</b>	<b>Semi Millyard</b>	<b>FUSION Semi Millyard</b>
Part Number	521-9401	521-9397	521-9398	521-9400
Weight - lb (kg)	3779 (1714)	4328 (1963)	3514 (1594)	4628 (2099)
Overall Width - in (mm)	87 (2200)	70 (1800)	70 (1800)	87 (2204)
Overall Height (Open) - in (mm)	93 (2347)	105 (2664)	105 (2664)	122 (3101)
Overall Length - in (mm)	76 (1921)	78 (1981)	72 (1830)	54 (1524)
Minimum Opening Between Clamp and Tines - in (mm)	6 (149)	6 (152)	6 (152)	6 (152)
Maximum Opening Between Clamp and Tines - in (mm)	82 (2089)	99 (2510)	99 (2510)	99 (2510)
Tine Spacing - in (mm)	77 (1955)	—	—	—
Tine Spacing Minimum - in (mm)	—	48 (1210)	48 (1210)	61 (1547)
Tine Spacing Maximum - in (mm)	—	66 (1670)	66 (1670)	82 (2086)
Grapple Area - yd2 (m2)	1.7 (1.4)	2 (1.7)	1.8 (1.5)	1.8 (1.5)
Required Hydraulics	3rd Function	3rd Function	3rd Function	3rd Function
Machine	938K/M	924K/926M, 930K/M, 938K/M	924K/926M, 930K/M, 938K/M	924K/926M, 930K/M, 938K/M
Price	\$	\$	\$	\$

## SMALL WHEEL LOADERS ATTACHMENTS | 2021



<b>FORKS STYLE</b>	<b>Millyard</b>	<b>FUSION Semi Millyard</b>
Part Number	521-9402	521-9399
Weight - lb (kg)	3737 (1695)	3479 (1578)
Overall Width - in (mm)	87 (2200)	70 (1800)
Overall Height (Open) - in (mm)	93 (2347)	105 (2771)
Overall Length - in (mm)	76 (1921)	73 (1855)
Minimum Opening Between Clamp and Tines - in (mm)	6 (149)	6 (152)
Maximum Opening Between Clamp and Tines - in (mm)	82 (2089)	99 (2510)
Tine Spacing - in (mm)	77 (1955)	—
Tine Spacing Minimum - in (mm)	—	48 (1210)
Tine Spacing Maximum - in (mm)	—	66 (1670)
Grapple Area - yd2 (m2)	1.7 (1.4)	1.8 (1.5)
Required Hydraulics	3rd Function	3rd Function
Machine	938	924K, 926M, 930K/M
Price	\$	\$



## SMALL WHEEL LOADERS ATTACHMENTS | 2021

**Sorting Grapple Forks** are designed for numerous applications in log and lumber handling. Moving logs from stack piles for further processing or unloading trucks, the Sorting Grapple Forks are built to perform.



Fusion Sorting Grapple Fork

FORK – SORTING GRAPPLE								FUSION
Part Number	Weight lb (kg)	Overall Width in (mm)	Maximum Level Height in (mm)	Total Length in (mm)	Max Opening Between Clamp & Tines in (mm)	Grapple Area yd2 (m2)	Required Hydraulics	Price
458-3462	3860 (1751)	71 (1812)	141 (3586)	315 (7989)	103 (2608)	2.3 (1.9)	3rd Function	\$



Fusion  
Sorting Grapple Fork



Pin On  
Sorting Grapple Fork

FORKS – SORTING GRAPPLE								FUSION / PIN ON
Part Number	Weight lb (kg)	Overall Width in (mm)	Maximum Level Height in (mm)	Total Length in (mm)	Max Opening Between Clamp & Tines in (mm)	Grapple Area yd2 (m2)	Required Hydraulics	Price
439-4270*	3349 (1519)	84 (2138)	142 (3621)	42 (1061)	64 (1624)	1.2 (1.0)	3rd Function	\$
441-0226**	3768 (1519)	91 (2313)	142 (3615)	47 (1200)	71 (1812)	1.6 (1.3)	3rd Function	\$

\*Fusion interface.

\*\*Pin On interface. Available for Latin America. Ex-Factory only.

## SMALL WHEEL LOADERS ATTACHMENTS | 2021



HPL - Wide (L50)  
Sorting Grapple Fork



FORKS – SORTING GRAPPLE							HPL - WIDE (L50)	
Part Number	Weight lb (kg)	Overall Width in (mm)	Maximum Level Height in (mm)	Total Length in (mm)	Max Opening Between Clamp & Tines in (mm)	Grapple Area yd2 (m2)	Required Hydraulics	Price
492-7185	3741 (1697)	71 (1812)	145 (3675)	315 (7989)	103 (2608)	21 (1.9)	3rd Function	\$

**Log and Lumber Fork Carriages** are used to load, unload, move deck, sort and feed the mill. Their flat fork tines and raised guards are designed specifically for handling both unfinished logs and stacked lumber.



Log and Lumber Carriage and Forks

FORK CARRIAGE – LOG AND LUMBER					PIN ON
Part Number	Weight lb (kg)	Frame Width in (mm)	Overall Width in (mm)	Frame Height in (mm)	Price
520-3467*	1651 (749)	105 (2660)	102 (2591)	57 (1442)	\$
539-2249*	1761 (799)	108 (2743)	111 (2812)	57 (1442)	\$

\*Requires 2 x 520-3468 or 2 x 520-3469

FORKS – LOG AND LUMBER							
Part Number	Weight lb (kg)	Length in (mm)	Width in (mm)	Thickness in (mm)	Height in (mm)	Style	Price
520-3468*	523 (237)	72 (1829)	7 (180)	2.5 (65)	40 (1017)	Non-Swinging, Non-Floating	\$
520-3469*	719 (326)	96 (2438)	7 (180)	2.9 (75)	40 (1016)	Non-Swinging, Non-Floating	\$

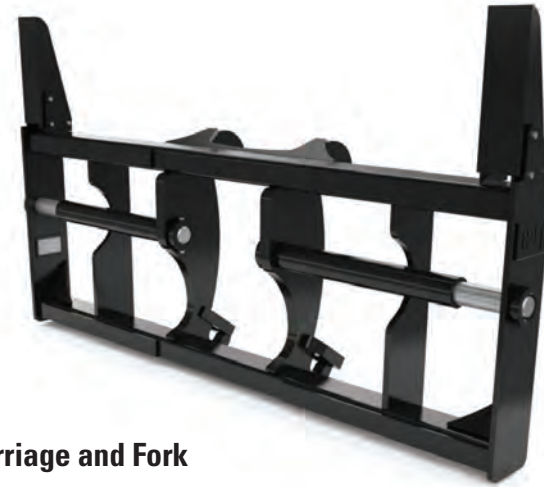
\*Order two forks for a complete set

## SMALL WHEEL LOADERS ATTACHMENTS | 2021

## SMALL WHEEL LOADERS ATTACHMENTS | 2021

### Log and Lumber Forks and Carriages

are used to load, unload, move deck, sort and feed the mill. Flat fork tines and raised guards are designed specifically for use in handling both unfinished logs and stacked lumber.

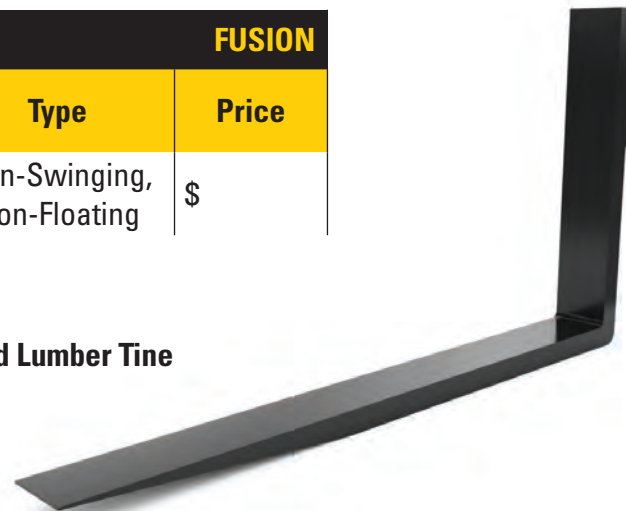


Non-Swinging,  
Non-Floating Carriage and Fork

FORK CARRIAGE – LOG AND LUMBER					FUSION
Part Number	Weight lb (kg)	Width in (mm)	Height in (mm)	Type	Price
520-3466*	1552 (704)	105 (2659)	57 (1458)	Non-Swinging, Non-Floating	\$

\*Requires 2 x 520-3468 or 2 x 520-3469

Log and Lumber Tine



FORKS – LOG AND LUMBER								
Part Number	Weight lb (kg)	Tine Length in (mm)	Overall Length in (mm)	Width in (mm)	Thickness in (mm)	Height in (mm)	Style	Price
520-3468*	523 (237)	72 (1829)	79 (2008)	7 (180)	2.6 (65)	40 (1017)	Non-Swinging, Non-Floating	\$
520-3469*	719 (326)	96 (2438)	104 (2628)	7 (180)	3 (75)	40 (1017)	Non-Swinging, Non-Floating	\$

\*Order two forks for a complete set

FORK CARRIAGE – LOG AND LUMBER					FUSION
Part Number	Weight lb (kg)	Width in (mm)	Height in (mm)	Type	Price
540-6596*	1167 (529)	74 (1869)	60 (1520)	Non-Swinging, Floating	\$
540-6599*	1241 (563)	86 (2174)	60 (1520)	Non-Swinging, Floating	\$

\*Requires 2 x 520-3458 or 2 x 520-3459 or 2 x 520-3460



Non-Swinging, Floating  
Carriage and Fork



FORKS – LOG AND LUMBER								
Part Number	Weight lb (kg)	Tine Length in (mm)	Overall Length in (mm)	Width in (mm)	Thickness in (mm)	Height in (mm)	Style	Price
520-3458*	364 (165)	48 (1219)	55 (1399)	6 (150)	2.6 (65)	42 (1058)	Non-Swinging, Floating	\$
520-3459*	406 (184)	60 (1524)	67 (1703)	6 (150)	2.6 (65)	42 (1058)	Non-Swinging, Floating	\$
520-3460*	450 (204)	72 (1829)	79 (2008)	6 (150)	2.6 (65)	42 (1058)	Non-Swinging, Floating	\$

\*Order two forks for a complete set

## SMALL WHEEL LOADERS ATTACHMENTS | 2021

FORK CARRIAGE – LOG AND LUMBER					FUSION
Part Number	Weight lb (kg)	Width in (mm)	Height in (mm)	Type	Price
545-5791*	1455 (660)	67 (1705)	74 (1880)	Swinging, Floating	\$

\*Requires 2 x 520-3463 or 2 x 520-3464 or 2 x 520-3465



Swinging, Floating Carriage and Fork

### FORKS – LOG AND LUMBER

Part Number	Weight lb (kg)	Tine Length in (mm)	Overall Length in (mm)	Width in (mm)	Thickness in (mm)	Height in (mm)	Style	Price
520-3463*	344 (156)	48 (1219)	55 (1399)	6 (150)	2.6 (65)	38 (965)	Swinging, Floating	\$
520-3464*	397 (180)	60 (1524)	67 (1703)	6 (150)	2.6 (65)	38 (965)	Swinging, Floating	\$
520-3465*	448 (203)	72 (1829)	79 (2008)	6 (150)	2.6 (65)	38 (965)	Swinging, Floating	\$

\*Order two forks for a complete set

### FLOAT LOCKOUT KIT – LOG AND LUMBER

FLOAT LOCKOUT KIT – LOG AND LUMBER			FUSION
Part Number	Description	Type	Price
522-8450	Kit blocks the floating option, to prevent tines floating.	Swinging, Floating	\$

## SMALL WHEEL LOADERS ATTACHMENTS | 2021



Cat® Rakes

**Cat Rakes** are designed to remove roots from the ground. This attachment is also used to pile up branches, logs or roots during a land cleaning application. Helpful when the operation requires removal of material and not the dirt.

### RAKES

RAKES							FUSION
Part Number	Weight lb (kg)	Overall Width in (mm)	Raking Width in (mm)	Height in (mm)	Number of Teeth	Required Hydraulics	Price
317-1241	2948 (1340)	106 (2697)	98 (2495)	65 (1653)	8	None	\$
317-1244*	4943 (2247)	120 (3047)	112 (2844)	74 (1875)	9	3rd Function	\$
317-1245*	4321 (1960)	92 (2348)	85 (2146)	74 (1875)	7	3rd Function	\$
432-8224**	4612 (2092)	92 (2348)	85 (2146)	74 (1875)	7	3rd Function	\$

\*Double top clamp

\*\*Full width clamp

## SMALL WHEEL LOADERS ATTACHMENTS | 2021

### Pallet Fork Carriages and Forks

offer improved operator visibility and are designed to meet a wide variety of material handling needs.

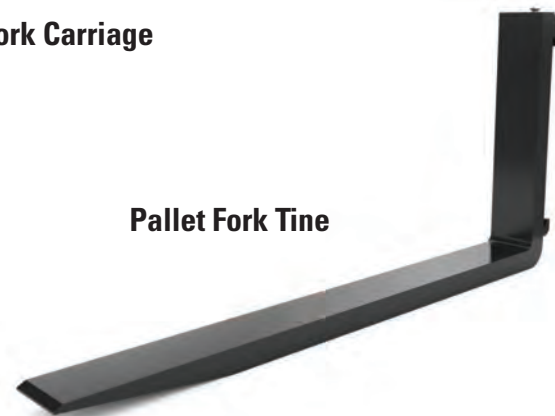


FORK CARRIAGE – PALLET						FUSION
Part Number	Class	Weight lb (kg)	Width in (mm)	Length in (mm)	Height in (mm)	Price
532-8222*	4	1570 (712)	62 (1566)	24 (610)	40 (1006)	\$

\*Requires 2 x Class 4 Offset forks/tines



Fusion Fork Carriage



Pallet Fork Tine

FORK TINES							
Part Number	Weight lb (kg)	Tine Length in (mm)	Overall Length in (mm)	Width in (mm)	Thickness in (mm)	Height in (mm)	Price
371-2348*	298 (135)	48 (1220)	52 (1321)	6 (150)	2.4 (60)	30 (758)	\$
371-2354*	322 (146)	54 (1370)	58 (1471)	6 (150)	2.4 (60)	30 (758)	\$
371-2360*	341 (155)	60 (1524)	64 (1625)	6 (150)	2.4 (60)	30 (758)	\$

\*Order two forks for a complete set. For use with Class 4 carriage.

## SMALL WHEEL LOADERS ATTACHMENTS | 2021



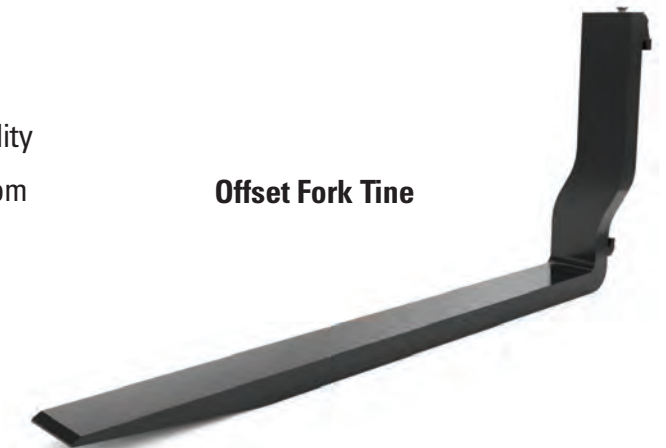
HPL - Wide (L50)  
Pallet Fork Carriage

FORK CARRIAGE – PALLET				HPL - WIDE (L50)	
Part Number	Class	Weight lb (kg)	Width in (mm)	Height in (mm)	Price
555-3376*	4	714 (324)	62 (1566)	38 (953)	\$

\*Requires 2 x Class 4 forks/tines

**Offset Pallet Fork Tines** offer improved visibility for the Fusion interface and also prevent loader arms from dragging when loading and unloading trucks.

Offset Fork Tine



FORK TINES – OFFSET								
Part Number	Weight lb (kg)	Tine Length in (mm)	Overall Length in (mm)	Width in (mm)	Thickness in (mm)	Height in (mm)	Side	Price
371-2374*	301 (137)	48 (1220)	52 (1321)	6 (150)	2.4 (60)	30 (758)	Right	\$
371-2375*	301 (137)	48 (1220)	52 (1321)	6 (150)	2.4 (60)	30 (758)	Left	\$
360-3354*	323 (147)	54 (1370)	58 (1475)	6 (150)	2.4 (60)	30 (758)	Left	\$
360-3355*	323 (147)	54 (1370)	58 (1475)	6 (150)	2.4 (60)	30 (758)	Right	\$
371-2377*	348 (158)	60 (1524)	64 (1625)	6 (150)	2.4 (60)	30 (758)	Right	\$
371-2376*	348 (158)	60 (1524)	64 (1625)	6 (150)	2.4 (60)	30 (758)	Left	\$

\*Order a left and right fork for a complete set. For use with Class 4 carriage.

## SMALL WHEEL LOADERS ATTACHMENTS | 2021



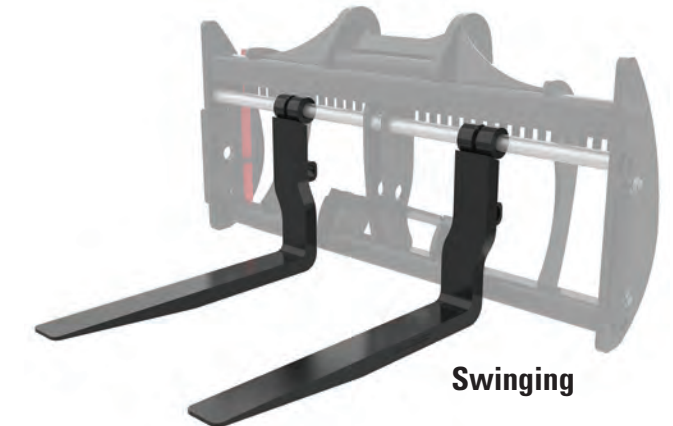
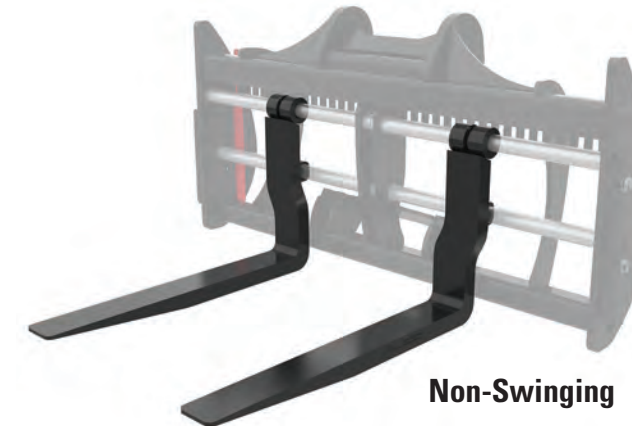
**Construction Forks** are wider than pallet forks and designed for heavy duty applications. Fork tines can be configured to allow tines to either swing or stay in a fixed position

FORKS – CONSTRUCTION							FUSION
Part Number	Weight lb (kg)	Tine Length in (mm)	Overall Length in (mm)	Width in (mm)	Thickness in (mm)	Height in (mm)	Price
538-3866*	2121 (962)	60 (1524)	85 (2169)	6 (150)	3 (75)	33 (841)	\$
538-3867*	2216 (1005)	72 (1829)	97 (2473)	6 (150)	3 (75)	33 (841)	\$

\*Includes two forks/tines

## SMALL WHEEL LOADERS ATTACHMENTS | 2021

**Construction Fork Carriages** are wider than pallet fork carriages and can be configured to allow tines to either swing or stay in a fixed position.



FORK CARRIAGE – HEAVY DUTY CONSTRUCTION					FUSION
Part Number	Weight lb (kg)	Width in (mm)	Height in (mm)	Price	
592-1005*	1149 (521)	84 (2134)	43 (1095)	\$	

\*Requires 1 set of tines (not included)

FORK KITS – HEAVY DUTY CONSTRUCTION				FUSION
Part Number	Tine Length in (mm)	Tine Width in (mm)	Tine Thickness in (mm)	Price
315-1414*	48 (1200)	6 (150)	2.5 (65)	\$
314-7445*	60 (1524)	6 (150)	2.5 (65)	\$
315-1415*	72 (1829)	6 (150)	2.5 (65)	\$

\*For use with 592-1005 carriage. Kits include both left hand and right hand tines.

**Swinging and Floating Forks Benefits**

**Swinging**  
Fork tines swing freely as the carriage angle changes with the benefit of the tines staying level with the ground. Swinging tines are easier to line up because the operator does not have to adjust the carriage angle.

**Floating**  
Fork tines move up and down along vertical cutouts on the carriage frame. This feature, known as "tine drop," allows the tines to sit below the frame of the carriage which enhances the operator's sightline and makes them ideal for use when working on uneven ground.

## SMALL WHEEL LOADERS ATTACHMENTS | 2021

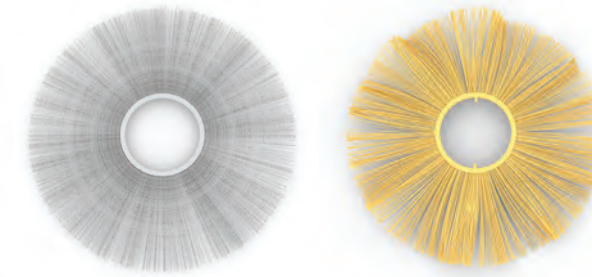
### Angle Brooms

are used for clearing parking lots, industrial plants, mill yards, airport runways, streets, driveways and lanes.



**BA25**  
Manual Angle Broom

## SMALL WHEEL LOADERS ATTACHMENTS | 2021



**BA30 Hydraulic Angle Broom**  
Steel and Poly Bristles



**BA30**  
Manual Angle Broom

ANGLE BROOMS		SWL	
MODEL	BA25	BA25	BA25
Width - in (mm)	106 (2700)	106 (2700)	106 (2700)
Sweeping Width - in (mm)	98 (2500)	98 (2500)	98 (2500)
Brush Diameter - in (mm)	28 (700)	28 (700)	28 (700)
Brush Material (50% Poly / 50% Wire)	Yes	Yes	Yes
Height - in (mm)	51 (1300)	51 (1300)	51 (1300)
Length - in (mm)	60 (1535)	60 (1535)	60 (1535)
Weight - lb (kg)	948 (430)	970 (440)	970 (440)
Angling	Manual	Hydraulic (12V)	Hydraulic (24V)
Part Number	600-8979*	600-8980*	600-8981*
Price	\$	\$	\$

\*Does not include hook; requires hook selection

ANGLE BROOMS		SWL	
MODEL	BA30	BA30	BA30
Width - in (mm)	126 (3200)	126 (3200)	126 (3200)
Sweeping Width - in (mm)	118 (3000)	118 (3000)	118 (3000)
Brush Diameter - in (mm)	36 (915)	36 (915)	36 (915)
Brush Material (50% Poly / 50% Wire)	Yes	Yes	Yes
Height - in (mm)	60 (1520)	60 (1520)	60 (1520)
Length - in (mm)	64 (1630)	64 (1630)	64 (1630)
Weight - lb (kg)	1100 (500)	1124 (510)	1124 (510)
Angling	Manual	Hydraulic (24V)	Hydraulic (24V)
Part Number	202-7700*	600-8983*	600-8983*
Price	\$	\$	\$

\*Does not include hook; requires hook selection

BRISTLES			SWL
BA25 BROOM	POLY	STEEL	SPACER
Part Number	302-8211	202-8957	421-1549
Quantity*	28	27	54
Price	\$	\$	\$

\*Quantities are number needed to complete one set of mixed (poly/steel) bristles.

HOOK SELECTION			SWL
MACHINE	INTERFACE	BA25	Price
910 - 938	ISO (L50)	487-8480	\$
Legacy	IT (IT38)	487-8481	\$
910 - 938	IT (IT14/28)	487-8490	\$
918 - 938	FUSION	497-9469	\$

BRISTLES			SWL
BA30 BROOM	POLY	STEEL	SPACER
Part Number	606-2973	138-1160	421-1549
Quantity*	34	33	66
Price	\$	\$	\$

\*Quantities are number needed to complete one set of mixed (poly/steel) bristles.

HOOK SELECTION			SWL
MACHINE	INTERFACE	BA30	Price
910 - 938	ISO (L50)	487-8480	\$
Legacy	IT (IT38)	487-8481	\$
910 - 938	IT (IT14/28)	487-8490	\$
918 - 938	FUSION	497-9469	\$



## SMALL WHEEL LOADERS ATTACHMENTS | 2021



SPECIAL APPLICATION BROOMS		SWL
MODEL	SA25	SA30
Width - in (mm)	109 (2757)	128 (3257)
Sweeping Width - in (mm)	98 (2500)	118 (3000)
Brush Diameter - in (mm)	36 (915)	36 (915)
Brush Material (100% Poly)	Yes	Yes
Height - in (mm)	56 (1422)	56 (1422)
Length - in (mm)	64 (1636)	64 (1636)
Weight - lb (kg)	1640 (743)	1800 (816)
Angling	Hydraulic	Hydraulic
Part Number	267-4961*	257-9680*
Price	\$	\$

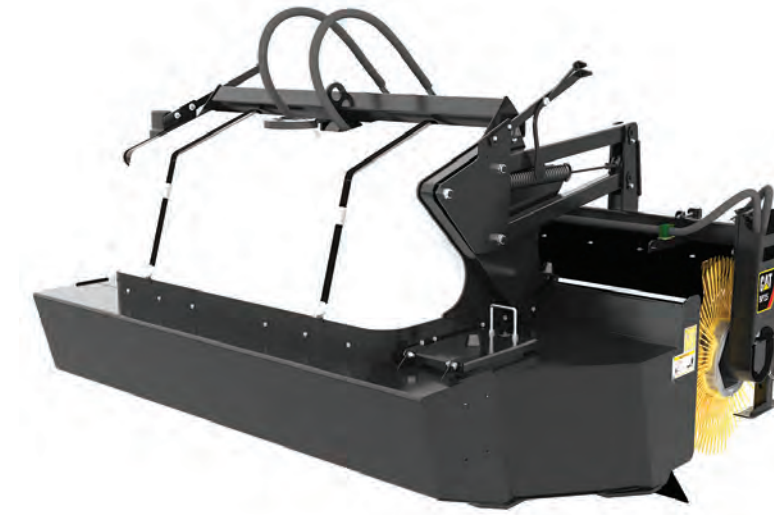
\*Does not include hook; requires hook selection

BRISTLES		SWL	
SPECIAL APPLICATION 25 BROOM	POLY C*	STEEL	SPACER
Part Number	239-6817	-	421-1549
Quantity	32	-	31
Price	\$	\$	\$
SPECIAL APPLICATION 30 BROOM	POLY C*	STEEL	SPACER
Part Number	239-6817	-	421-1549
Quantity	40	----	39
Price	\$	\$	\$

\*C - Convuluted (not straight)

HOOK SELECTION			SWL
MACHINE	INTERFACE	SA25 / SA30	Price
910 – 938	ISO (L50)	487-8480	\$
Legacy	IT (IT38)	487-8481	\$
910 – 938	IT (IT14/28)	487-8490	\$
918 – 938	FUSION	497-9469	\$

## SMALL WHEEL LOADERS ATTACHMENTS | 2021



PICKUP BROOMS		SWL
MODEL	BP25	
Width - in (mm)	1435 (651)	
Sweeping Width - in (mm)	98 (2500)	
Brush Diameter - in (mm)	28 (700)	
Brush Material (50% Poly / 50% Wire)	Yes	
Height - in (mm)	59 (1500)	
Length - in (mm)	71 (1800)	
Weight - lb (kg)	1435 (651)	
Part Number	487-8484*	
Price	\$	

\*Does not include hook; requires hook selection

BRISTLES		SWL	
BP25 BROOM	POLY	STEEL	SPACER
Part Number	157-2556	-	421-1549
Quantity	34	-	33
Price	\$	\$	\$

HOOK SELECTION			SWL
MACHINE	INTERFACE	BP25	Price
910 – 938	ISO (L50)	487-8480	\$
Legacy	IT (IT38)	487-8481	\$
910 – 938	IT (IT14/28)	487-8490	\$
918 – 938	FUSION	497-9469	\$

## SMALL WHEEL LOADERS ATTACHMENTS | 2021

## SMALL WHEEL LOADERS ATTACHMENTS | 2021

BROOM KITS		SWL
Part Number	Description	Price
497-9469	Broom Hook, Fusion - For use with Fusion quick coupler	\$
487-8490	Broom Hook, IT - For use with standard quick coupler IT14/28	\$
487-8481	Broom Hook, IT38 - For use with standard quick coupler IT38	\$
487-8480	Broom Hook, HPL - Wide (L50) - For use with horizontal pin lock coupler HPL - Wide (L50)	\$
446-9301	Broom Kit, Electric, SWL K/M – For use with all brooms on 924-938K/M series	\$
602-6792	Broom Kit, Electric, SWL K/M – Includes 8 pins electrical harness FOR USE WITH: All brooms on 924-938K/M Series	\$
173-2190	Broom Kit, Electric, SWL G/H + MG - For use with: 938H, 930H, 928Hz, 928Gz, 924Hz, 924Gz, 924H and IT28G	\$
363-4263	Broom Kit, Electric, BP25, 924G/H - For use with BP25 and 924G/H	\$
457-4632	QDS Kit, Twist, M45 - Converts a machine using the flat face type quick disconnects to a machine using the screw to connect type quick disconnects.	\$
269-9333	BA25 Shield Extension - Spray protection for BA25	\$
269-9281	BA30 Shield Extension - Spray protection for BA30	\$
497-9459	BA25 Broom Spray Kit, 24V	\$
497-9460	BA30 Broom Spray Kit, 24V	\$
497-9461	BA25 Broom Tank Kit, 105 gallons (Requires 497-9459 KIT SPRAY, BA25, 24V)	\$
497-9462	BA30 Broom Tank Kit, 158 gallons (Requires 497-9460 KIT SPRAY, BA30, 24V)	\$

**\*NOTE:** Use the IT coupler to connect non-current small wheel loader worktools to your existing fleet.  
For a list of non-current IT worktools, please contact your local Cat dealer.

QUICK COUPLER			IT
Part Number	Description	Machines	Price
396-1605*	IT (Standard) hydraulic quick coupler	924K, 930K, 926M, 930M	\$

QUICK COUPLER		HORIZONTAL PIN LOCK - WIDE	
Part Number	Description	Machines	Price
395-0329	CAT HPL (horizontal pin lock - wide) hydraulic quick coupler, 2" pins and 4" top bar	924K, 930K, 926M, 930M	\$

COUPLING QD KIT		
Part Number	Description	Price
455-7380	Provides a set (male and female) of flat face connect under pressure quick disconnects. These are twist to connect M45.	\$

PUSH QDS SIZE 12 KIT		
Part Number	Description	Price
196-4191	Kit provides a set (male and female) "Push to Connect" Quick Disconnects. For pre 2014 K series machines.	\$

