

D560

ROCK DRILL



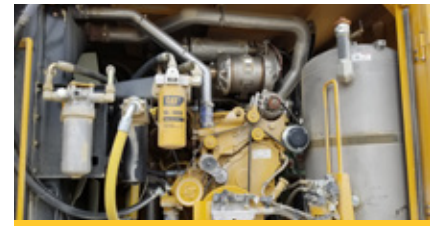
RELIABLE DRIFTER.

The HPR5128 drifter provides low cost of ownership and reliability through a simple design with high strength materials. Auto lube system along with field serviceability increases productivity. HPR6030 and HPR6832 drifters also available.



CAROUSEL ROD CHANGER.

The six rod carousel holds 51 mm, 60 mm or 68 mm diameter rods with a multi-pass hole depth of 102' (31.1 m). The precise positioning function indexes and locks, eliminating switches and sensors that are failure prone due to the elements and vibration.



MORE POWER.

The power group delivers fast cycle times and maximum efficiency with a combination of 550 cfm (15.6 m³/min) air capacity, 375 hp (280 kW) Cat® C9.3B engine and an oversized cooler to keep all systems operating at optimal temperatures.



DURABLE COMPONENTS.

The frame and robust undercarriage provide durability for the demands of drilling and navigating rough terrain. The frame supports the upper machine weight with excellent maneuverability due to its low center of gravity, high ground clearance and independent track oscillation.



OPERATOR COMFORT.

The cab provides a quiet and comfortable work environment for drill operation. The cab features superior safety features, high visibility safety glass and responsive controls that minimize fatigue.



FAST SERVICE.

Maintenance friendly designs feature safe and efficient service access with logically located components. Caterpillar dealer service and support keep your machine up and running.

D560 SPECIFICATIONS

GENERAL SPECS

HOLE DIAMETER	3.5" - 6.5"	89 - 165 mm
MAX HOLE DEPTH	102.5 "	31 m
ENGINE	Cat® C9.3 Tier 4 or LRC	
HORSEPOWER	375 hp	280 kW
COMPRESSOR	550 cfm	15.6 m³/min
HPR5128 DRIFTER	38 hp	28 kW

BOOM SYSTEM

BOOM LENGTH	9'	2.7 m
BOOM EXTENSION	3'	0.91 m
BOOM SWING	10° L to 32° R	
BOOM LIFT ABOVE HOR.	50°	
BOOM LIFT BELOW HOR.	29°	
EXT. OFFSET FEED TABLE	3'	0.91 m
FEED SWING	36° L to 37° R	

HPR5128 DRIFTER

OUTPUT ENERGY	37.5 hp	28 kW
MOTOR TORQUE	1,500 lbf-ft	2033 N-m
WEIGHT	912 lb	414 kg
ROD DIAMETERS	51 mm	
BLOW RATE	2500 - 2700 bpm	
PERCUSSION PRESSURE	2,900 psi	200 bar

DIMENSIONS

OPERATING LENGTH	27' 5"	8.3 m
OPERATING HEIGHT	30'	9.1 m
OPERATING WIDTH	10' 6"	3.2 m
TRAMMING LENGTH	34' 2"	10.4 m
TRAMMING HEIGHT	12'	3.6 m
SHIPPING LENGTH	36' 9"	11.2 m
SHIPPING HEIGHT	11' 4"	3.4 m
SHIPPING WIDTH	8' 6"	2.6 m
SHIPPING WEIGHT	48,500 lb	21 999 kg

FEED SYSTEM

STEEL CHANNELS (2)	7"	177.8 mm
PITCH ROLLER CHAIN	1.5"	38.1 mm
GEARBOX DRIVE FORCE	10,000 lb	44 500 N
GEARBOX DRIVE SPEED	121 fpm	36.9 m/min

HPR6030 DRIFTER

OUTPUT ENERGY	40 hp	30 kW
MOTOR TORQUE	1,500 lbf-ft	2033 N-m
WEIGHT	912 lb	414 kg
ROD DIAMETERS	51 mm/60 mm	
BLOW RATE	2500 - 2700 bpm	
PERCUSSION PRESSURE	2,900 psi	200 bar

UNDERCARRIAGE

GROUSER PADS	15"	380 mm
GROUND CLEARANCE	16"	406 mm
TRACK GAUGE	80"	2032 mm
HIGH TRAM SPEED	2.7 mph	4.3 km/h
LOW TRAM SPEED	1.7 mph	2.7 km/h
TRACK OSCILLATION	±10°	

CAROUSEL ROD CHANGER SYSTEM

ROD LENGTH	12'/14'	3.6 m/4.3 m
ROD DIAMETERS	51 mm/60 mm/68 mm	
STARTER ROD	20'/24'	6.1 m/7.3 m
SINGLE PASS DEPTH	18.5'/22.5'	5.63 m/6.83 m
MULTI-PASS DEPTH	102'/106'	31.1 m/31.57 m

HPR6832 DRIFTER

OUTPUT ENERGY	43 hp	32 kW
MOTOR TORQUE	1,500 lbf-ft	2033 N-m
WEIGHT	912 lb	414 kg
ROD DIAMETERS	60 mm/68 mm	
BLOW RATE	2500 - 2700 bpm	
PERCUSSION PRESSURE	2,900 psi	200 bar

PRODUCTIVITY

Fast cycle times and maximum efficiency with Cat® C9.3B engine

Large capacity air compressor rated at 550 cfm (15.6 m³/min)

Carousel rod changer reduces rod change time through fast setups

Carousel rod changer accepts multiple lengths and diameters of steel

Unique gate design keeps a rod in position, ready to load

Electronics free rod changer eliminates sensors and switches

Hammers are powerful, durable and serviceable on the boom

Three hammer sizes to meet most common application needs

High capacity dust collection system is easy to clean and service

System monitors main hydraulic systems and auto adjusts

Auto lube system eliminates manual greasing

Undercarriage is dual tram speed 2.7/1.7 mph (4.3/2.7 km/h)

RELIABILITY

Heavy-duty frame, boom and feed handle rough conditions

Undercarriage is highly maneuverable and durable

Grease lubricated track that reduces track noise and enhances wear life

Long-lasting, field-proven design and components

SALES AND SERVICE

Sold and serviced exclusively through Caterpillar dealers worldwide.

WWW.WEILERPRODUCTS.COM

OPERATING ENVIRONMENT

Cab is quiet and comfortable for relaxed operation

High visibility with 56.4 ft² (5.24 m²) tinted safety glass windows

Climate controlled cab

Air is filtered to the operator

Door window opens for fresh air and communication

Six way adjustment of the operator seat

Dual joystick controls are ergonomic and seat-mounted

Sunlight Readable 10.1" TFT (touchscreen) color LCD display w/Camera

SERVICEABILITY

Organized electrical and hydraulic arrangements

Logically located components for straightforward servicing

Pumps and valves conveniently arranged for service

Quick and easy access to all major servicing points

Multiple safety shutdowns at ground level

Back up camera and viewing monitor enhance visibility

Non-slip, heavy-duty steps and handles

WARRANTY

12 months standard. Extended warranty available.

QEXQ2414