

2021

CAT[®] ATTACHMENTS MINI HYDRAULIC EXCAVATORS

300.9D - 310





ATTACHMENT HANDBOOK INDEX

PIN COMPATIBILITY	4
PIN KITS	4
AUGERS DRIVE ASSEMBLIES	6
AUGER BITS	8
STANDARD DUTY	8
BOLT-ON ROCK HEAD	8
INDUSTRIAL	9
INDUSTRIAL ROCK	9
TREE	10
ADAPTERS AND EXTENSIONS	10
BUCKET TEETH	11
BUCKETS	13
DIGGING / GENERAL PURPOSE	13
DITCH CLEANING	16
TILTING / DITCH CLEANING / GRADING / MUD	20
GRADING / MUD	20
TRENCHING / BANANA	26
CEMETERY	26
GRADING	26
CLEANING	26
HIGH CAPACITY	26
HEAVY DUTY	27
HEAVY DUTY ROCK	29
HEAVY DUTY CAPACITY	29
NORDIC STYLE	30

PART NUMBERS ARE UP TO DATE AS OF MARCH 2021.



NOTE Pages with yellow bars at the bottom contain parts only available in Europe, Africa and the Middle East.

Machine Class	40 Lb	55 Lb	75 Lb
Width - in (mm)	47 (1200)	58 (1500)	71 (1800)
Capacity - cu ft (m ³)	43 (1200)	12 (3000)	14 (4000)
Weight - lb (kg)	357 (162)	417 (189)	476 (216)
Part Number	547-8961	547-1992	547-7983
Price	\$	\$	\$

ATTACHMENT HANDBOOK INDEX

COMPACTION WHEELS	32
PIN ON	32
PIN LOCK	34
COUPLERS	36
PIN LOCK	36
DUAL LOCK™ - PIN GRABBER	37
CW	38
DUAL LOCK™ HYDRAULIC / S-TYPE-HYDRAULIC	40
TILTING DUAL LOCK-HYDRAULIC	41
FLAIL MOWERS	42
HAMMERS	43
B MODELS	43
B MODELS SIDE MOUNT	45
H MODELS	46
HAMMERS - TOOLS	47
MULCHERS	50
RAKES	51
SCRAP SHEARS	51
RIPPERS	52
GRAPPLE	52
THUMBS	53
VIBRATORY PLATE COMPACTORS	54
TILT ROTATE SYSTEMS	56
TRS6	56
TRS8	57
ADAPTERS SSL TO MHE	58
XTC ATTACHMENTS	59

MINI HYDRAULIC EXCAVATOR ATTACHMENTS | 2021

PIN COMPATABILITY

Machine Class	Pin Diameter	Legacy	Current
< 1 Ton	25 mm		300.9D
1 Ton	30 mm	301.4C / 301.5 / 301.6C / 301.7D / 301.7D CR / 301.8 / 301.8C	301.5 / 301.6 / 301.7 CR / 301.8 / 302 CR
2 Ton	35 mm	302.2D / 302.4D / 302.5C / 302.5	302.7D CR
3 - 4 Ton	40 mm	303C CR / 303E CR / 303.5C CR / 303.5D CR / 303.5E / 304D CR / 304.5E2 CR	303E CR / 303.5E2 CR / 304E2 CR
5 - 6 Ton	45 mm	304C CR / 305C CR / 305D CR / 305E CR / 305.5D CR / 305.5E CR / 305.5E2 CR / 306E2	305E2 CR / 306 CR
7 - 9 Ton	50 mm	307D / 307E / 307E2 and 308D / 308E CR / 308E2 CR	307.5 / 308 CR / 309 CR
10 Ton	60 mm		310 / BHL 450

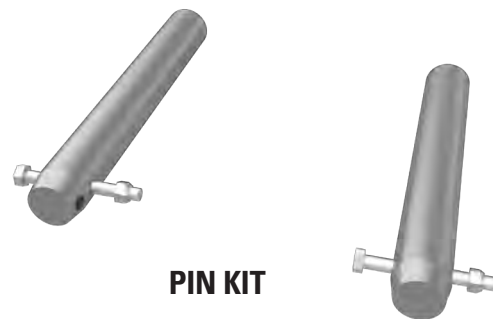
* Not all machines models are available in all regions.
Contact you local dealer for exact compatibility and availability.

PIN KITS

Machine Class	Pin Diameter	Kit- Pins	Price	Pin x 2	Cotter Pin x 2
< 1 Ton	25 mm	N/A	\$	373-5697	373-5664

PIN KITS

Machine Class	Pin Diameter	Kit - Pins	Price
1 Ton	30 mm	154-2672	\$
2 Ton	35 mm	154-2683	\$
3 - 4 Ton	40 mm	154-2638	\$
5 - 6 Ton	45 mm	282-2785	\$
7 - 9 Ton	50 mm	308-0324	\$
10 Ton	60 mm	556-3635	\$



MINI HYDRAULIC EXCAVATOR ATTACHMENTS | 2021

MACHINE HYDRAULIC CONFIGURATIONS

Attachment	Attachment Model	Machine Configuration				Machine Setup	
		First Aux	Second Aux	Case Drain	Electrical Harness	1-way flow	2-way flow
Augers (legacy/current)	A7/A11, A14/A23, A19/A41, A26/A68	✓					✓
CVP	CVP16, CVP40	✓				✓	
Hammer	B1, B2, B4, B6, B8, B9 H35s, H45s, H55s, H65s, H80s, H95s	✓				✓	
Flail Mower	HMF110, HMF210	✓		✓	✓	✓	
Mulcher	HM208, HM210	✓		✓	✓	✓	
Tilting Ditch Cleaning Buckets	All	✓					✓
Scrap Shear (legacy/current)	S305/S308	✓	✓				✓
Tilt Rotate System	TRS6, TRS8	✓		✓	✓		✓
Thumb	Hydraulic	✓					✓
Grapple (legacy/current)	G107/G108	✓					✓

MINI HYDRAULIC EXCAVATOR ATTACHMENTS | 2021

MINI HYDRAULIC EXCAVATOR ATTACHMENTS | 2021

Cat® Augers offer different speed and torque options

for a variety of soils. Speed and torque are engineered to extract soil efficiently and to prevent stalling in dense ground. Select from a range of auger bits.



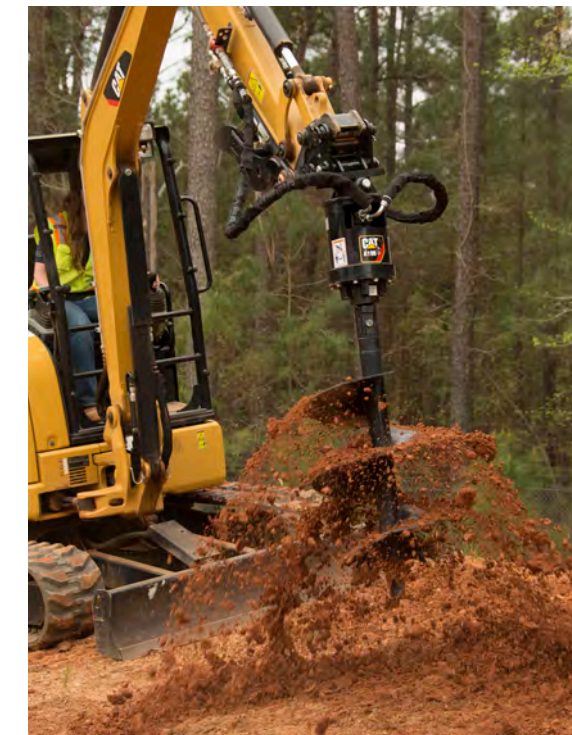
AUGER DRIVES

AUGER DRIVE ASSEMBLIES (INCLUDES BRACKET)			
MODEL - Legacy	A7B	A7B	A14B
MODEL - Current	A11	A11	A23
Machine Class	1 Ton	2 Ton	2 Ton
Overall Height - in (mm)	35 (900)	35 (900)	37 (947)
Weight - lb (kg)	174 (79)	179 (81)	258 (117)
Drive Shaft Torque at Max Pressure - lb ft (N m)	815 (1105)	815 (1105)	1699 (2304)
Required Hydraulics	First Aux	First Aux	First Aux
Drive Method	Direct Drive	Direct Drive	Direct Drive
Part Number	218-3206	218-3207	218-3197
Price	\$	\$	\$

AUGER DRIVE ASSEMBLIES (INCLUDES BRACKET)					
MODEL - Legacy	A14B	A19B	A19B	A26B	A26B
MODEL - Current	A23	A41	A41	A68	A68
Machine Class	3 - 4 Ton	3 - 4 Ton	5 - 6 Ton	5 - 6 Ton	7 - 9 Ton
Overall Height - in (mm)	38 (958)	34 (875)	34 (875)	36 (916)	36 (916)
Weight - lb (kg)	265 (120)	203 (92)	207 (94)	234 (106)	324 (147)
Drive Shaft Torque at Max Pressure - lbs ft (N m)	1699 (2304)	3039 (4120)	3039 (4120)	5035 (6826)	5035 (6826)
Required Hydraulics	First Aux	First Aux	First Aux	First Aux	First Aux
Drive Method	Direct Drive	Single Planetary	Single Planetary	Single Planetary	Single Planetary
Part Number	218-3198	220-7137	275-1000	275-1001	313-1460
Price	\$	\$	\$	\$	\$

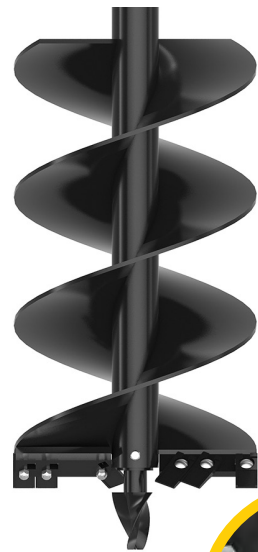
AUGER DRIVES AND BRACKETS					
MODEL - Legacy	A7B	A7B	A14B	A14B	A19B
MODEL - Current	A11	A11	A23	A23	A41
Machine Class	1 Ton	2 Ton	2 Ton	3 - 4 Ton	3 - 4 Ton
Drive	225-3893	225-3893	225-3895	225-3895	230-5578
Price	\$	\$	\$	\$	\$
Bracket	213-9238	213-8570	213-8570	213-8568	213-8568
Price	\$	\$	\$	\$	\$

AUGER DRIVES AND BRACKETS			
MODEL - Legacy	A19B	A26B	A26B
MODEL - Current	A41	A68	A68
Machine Class	5 - 6 Tons	5 - 6 Tons	7 - 9 Tons
Drive	230-5578	225-8809	225-8809
Price	\$	\$	\$
Bracket	275-0999	275-0999	N/A
Price	\$	\$	\$



AUGER DRIVE ASSEMBLIES

MINI HYDRAULIC EXCAVATOR ATTACHMENTS | 2021



AUGER BIT - STANDARD DUTY

AUGER BITS - STANDARD DUTY					
Diameter - in (mm)	4 (102)	6 (152)	9 (229)	12 (305)	15 (381)
Overall Length - in (mm)	48 (1219)	49 (1238)	49 (1238)	50 (1279)	51 (1289)
Weight - lb (kg)	40 (18)	51 (23)	75 (34)	101 (46)	111 (50)
Number of Teeth	pilot only	2	3	4	5
Part Number	366-7751	153-4083	153-4084	153-4085	366-7752
Price	\$	\$	\$	\$	\$

AUGER BITS - STANDARD DUTY (CONT.)				
Diameter - in (mm)	18 (457)	24 (610)	30 (762)	36 (914)
Overall Length - in (mm)	50 (1279)	51 (1289)	50 (1279)	50 (1279)
Weight - lb (kg)	143 (65)	203 (92)	282 (128)	381 (173)
Number of Teeth	6	8	10	12
Part Number	153-4086	153-4089	217-3194	153-4091
Price	\$	\$	\$	\$



**AUGER - BOLT-ON
ROCK HEAD**

AUGER BITS - BOLT-ON ROCK HEAD						
Diameter - in (mm)	6 (191)	9 (267)	12 (343)	15 (419)	18 (495)	24 (648)
Overall Length - in (mm)	9 (238)	10 (251)	10 (251)	10 (263)	11 (276)	12 (302)
Weight - lb (kg)	23 (11)	33 (15)	41 (19)	47 (21)	55 (25)	79 (36)
Number of Teeth	8	10	12	14	16	20
Part Number	372-0230	372-0231	372-0232	372-0233	372-0234	372-0235
Price	\$	\$	\$	\$	\$	\$

- Requires standard flight
- Transforms a standard bit into an rock drill bit
- For severe ground conditions including rock and various types of concrete
- Bolt-on design for easy removal when returning to normal conditions

MINI HYDRAULIC EXCAVATOR ATTACHMENTS | 2021



AUGER - INDUSTRIAL

AUGER BITS - INDUSTRIAL					
Diameter - in (mm)	6 (152)	9 (229)	12 (305)	16 (407)	18 (457)
Overall Length - in (mm)	48 (1224)	48 (1220)	48 (1219)	48 (1221)	48 (1224)
Weight - lb (kg)	57 (26)	73 (33)	90 (41)	115 (52)	108 (49)
Number of Teeth	2	4	4	6	6
Part Number	372-0260	372-0261	372-0262	372-0263	372-0264
Price	\$	\$	\$	\$	\$

AUGER BITS - INDUSTRIAL (CONT.)					
Diameter - in (mm)	24 (610)	30 (762)	36 (914)	42 (1067)	48 (1219)
Overall Length - in (mm)	48 (1219)	48 (1219)	48 (1219)	48 (1219)	48 (1220)
Weight - lb (kg)	150 (68)	181 (82)	223 (101)	291 (132)	344 (156)
Number of Teeth	8	12	12	16	16
Part Number	372-0265	372-0266	372-0267	372-0268	372-0269
Price	\$	\$	\$	\$	\$



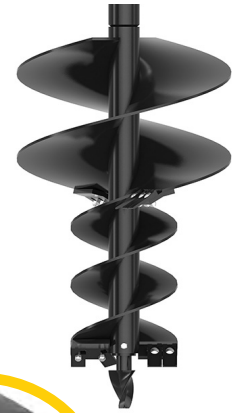
AUGER - INDUSTRIAL ROCK

AUGER BITS - INDUSTRIAL ROCK					
Diameter - in (mm)	6 (152)	9 (229)	12 (305)	16 (406)	18 (457)
Overall Length - in (mm)	48 (1222)	48 (1222)	48 (1222)	48 (1221)	48 (1221)
Weight - lb (kg)	79 (36)	108 (49)	135 (61)	168 (76)	192 (87)
Number of Teeth	8	10	12	15	16
Part Number	372-0270	372-0271	372-0272	372-0273	372-0274
Price	\$	\$	\$	\$	\$

AUGER BITS - INDUSTRIAL ROCK (CONT.)				
Diameter - in (mm)	20 (508)	24 (610)	30 (762)	36 (914)
Overall Length - in (mm)	48 (1221)	48 (1222)	48 (1222)	48 (1222)
Weight - lb (kg)	218 (99)	282 (128)	311 (141)	410 (186)
Number of Teeth	17	20	24	26
Part Number	372-0275	372-0276	372-0277	372-0278
Price	\$	\$	\$	\$

- Excellent tooth retention while digging
- Allows for easy removal and installation

MINI HYDRAULIC EXCAVATOR ATTACHMENTS | 2021



Auger Bits – Tree

Tapered tip for drilling holes with a large mouth and narrow base to properly fit a root ball or holes with a small diameter to fill with mulch or fertilizer.

AUGER BITS - TREE		
Upper Diameter - in (mm)	24 (610)	36 (914)
Lower Diameter - in (mm)	12 (305)	18 (457)
Overall Length - in (mm)	51 (1289)	51 (1288)
Weight - lb (kg)	163 (74)	309 (140)
Number of Teeth	5	7
Part Number	153-4092	153-4095
Price	\$	\$



AUGER - TREE

ADAPTERS AND EXTENSIONS

Adapter, Hex - 2 in (50 mm) to Round - 2 9/16 in (65 mm)	156-6329	\$
Adapter, Round 2 9/16 in (65 mm) to Hex 2 in (50 mm)	217-3191	\$
Extension, Telescoping 3 ft (914 mm)	372-0256	\$
Extension, Telescoping 6 ft (1829 mm)	372-0257	\$
Extension, Auger 12 in (305 mm)	156-6328	\$
Extension, Auger 24 in (610 mm)	217-3192	\$
Retention Pin Kit	372-0258	\$



RETENTION PIN KIT
372-0258



EXTENSION - TELESCOPING

372-0256

3 ft (914 mm)

3 adjustments spaced 1 ft (305 mm) apart

EXTENSION 156-6328

12 in (305 mm)

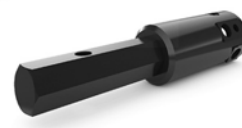


EXTENSION 217-3192

24 in (610 mm)

ADAPTER 217-3191

ROUND TO HEX



ADAPTER 156-6329

HEX TO ROUND



EXTENSION - TELESCOPING

372-0257

6 ft (1829 mm)

6 adjustments spaced 1 ft (305 mm) apart

MINI HYDRAULIC EXCAVATOR ATTACHMENTS | 2021

BUCKET TEETH

		Description
	Long	<ul style="list-style-type: none"> Best choice for most jobs Good strength Good penetration Good wear material
	Light Duty Long	<ul style="list-style-type: none"> Self-sharpening design and symmetrical shape For use in low impact with low to medium abrasiveness
	Short	<ul style="list-style-type: none"> More strength Less wear material
	Wide	<ul style="list-style-type: none"> Low penetration Low impact applications For use on smooth ground surfaces
	Penetration	<ul style="list-style-type: none"> Very good penetration Moderate impact for lower abrasive conditions Less wear material
	Sharp Corner	<ul style="list-style-type: none"> Best penetration Easy wear material DH-3 steel for greater wear
	Sharp-Center	<ul style="list-style-type: none"> Excellent penetration For use on chesive materials Less wear material
	Sharp - Twin	<ul style="list-style-type: none"> Very good penetration For use on fracturable materials Install in corner positions with spike centers
	Heavy Duty Long	<ul style="list-style-type: none"> More wear material For use on larger machines in general loading and excavation work
	Heavy Duty Abrasion	<ul style="list-style-type: none"> Use on larger machines when working in sand, gravel and short rock Maximum wear material Least cost per hour Less penetration
	Abrasion	<ul style="list-style-type: none"> More wear material Less penetration For use in general more abrasive loading

MINI HYDRAULIC EXCAVATOR ATTACHMENTS | 2021

MINI HYDRAULIC EXCAVATOR ATTACHMENTS | 2021

BUCKET TEETH

Description	J200 (3-6 ton)	Price each	J225 (7-9 Ton) (10 Ton)	Price each
Long	1U-3202	\$	6Y-3222	\$
Retainer	8E-6209	\$	8E-6259	\$
Light Duty Long	449-2154	\$	N/A	\$
Short	N/A	\$	6Y-6221	\$
Wide	109-9200	\$	186-3010	\$
Penetration	1U-3209	\$	6Y-8229	\$
Sharp - Corner	9W-8208	\$	6Y-7228	\$
Sharp - Center	9W-8209	\$	6Y-7229	\$
Sharp - Twin	135-8208	\$	135-8228	\$
Heavy Duty Long	N/A	\$	8E-4222	\$
Heavy Duty Abrasion	N/A	\$	6Y-6223	\$
Abrasion	4T-2203	\$	N/A	\$
Heavy Duty Pin	8E-6208	\$	132-4762	\$
Heavy Duty Retainer - Assembly	8E-6209	\$	149-5733	\$

The shape of Cat buckets improves digging, loading and material retention.

Each bucket is made of high-strength, tempered steel. Select from a range of bucket teeth.

Pin on buckets can be used in combination with applicable pin-grabber quick coupler.

DIGGING BUCKETS / GENERAL PURPOSE		PIN ON
Machine Class	< 1 Ton	< 1 Ton
Width - in (mm)	10 (250)	15 (370)
Capacity - ft3 (L)	0.5 (14)	0.6 (18)
Weight - lb (kg)	33 (15)	41 (18)
Part Number	373-4456	432-5173
Price	\$	\$



DIGGING / GENERAL PURPOSE BUCKET



DIGGING / GENERAL PURPOSE BUCKETS						PIN ON
Machine Class	1 Ton	1 Ton	1 Ton	1 Ton	1 Ton	1 Ton
Width - in (mm)	9 (230)	12 (300)	16 (400)	18 (460)	20 (500)	24 (600)
Capacity - ft3 (L)	0.65 (17)	0.78 (23)	1.16 (34)	1.4 (40)	1.59 (45)	1.97 (57)
Weight - lb (kg)	65 (29)	67 (31)	78 (35)	84 (38)	90 (41)	100 (45)
Part Number	147-1014	147-1018	147-1020	190-7387	147-1023	147-1026
Price	\$	\$	\$	\$	\$	\$



MINI HYDRAULIC EXCAVATOR ATTACHMENTS | 2021

MINI HYDRAULIC EXCAVATOR ATTACHMENTS | 2021



DIGGING BUCKETS



DIGGING / GENERAL PURPOSE BUCKETS							PIN ON
Machine Class	2 Ton	2 Ton	2 Ton	2 Ton	2 Ton	2 Ton	2 Ton
Width - in (mm)	10 (260)	12 (300)	16 (400)	18 (460)	20 (500)	24 (600)	28 (700)
Capacity - ft3 (L)	1 (27.45)	1.2 (34.29)	1.6 (45)	1.9 (53.5)	2.1 (59.7)	2.7 (76.19)	3.2 (92)
Weight - lb (kg)	103 (47)	101 (46)	111 (50)	119 (54)	129 (59)	143 (65)	156 (71)
Part Number	396-9302	396-9303	396-9304	396-9305	396-9306	396-9307	396-9308
Price	\$	\$	\$	\$	\$	\$	\$

DIGGING / GENERAL PURPOSE BUCKETS						PIN ON
Machine Class	3 Ton	3 Ton	3 Ton	3 Ton	3 Ton	3 Ton
Interface Type	Pin-On	Pin-On	Pin-On	Pin-On	Pin-On	Pin-On
Width - in (mm)	12 (300)	16 (400)	18 (460)	20 (500)	24 (600)	30 (750)
Capacity - ft3 (L)	1.8 (50)	2.5 (70)	2.8 (80)	3.2 (90)	4.2 (120)	5.7 (160)
Weight - lb (kg)	124 (56)	135 (61)	146 (66)	157 (71)	174 (79)	201 (91)
Part Number	279-4312	281-3824	279-4320	279-4313	281-1551	279-4321
Price	\$	\$	\$	\$	\$	\$

DIGGING / GENERAL PURPOSE BUCKETS EXCLUDING 302.2D OR 302.4D*							PIN ON
Machine Class	2 Ton	2 Ton	2 Ton	2 Ton	2 Ton	2 Ton	2 Ton
Width - in (mm)	10 (260)	12 (300)	16 (400)	18 (460)	20 (500)	24 (600)	28 (700)
Capacity - ft3 (L)	1.2 (34)	1.4 (39.6)	1.9 (53.8)	2.3 (65.1)	2.6 (73.6)	3.2 (90.6)	3.9 (111)
Weight - lb (kg)	112 (51)	111 (51)	121 (55)	130 (59)	140 (64)	155 (71)	170 (77)
Part Number	176-7283	153-7851	153-7854	190-7390	153-7857	153-7860	190-7391
Price	\$	\$	\$	\$	\$	\$	\$

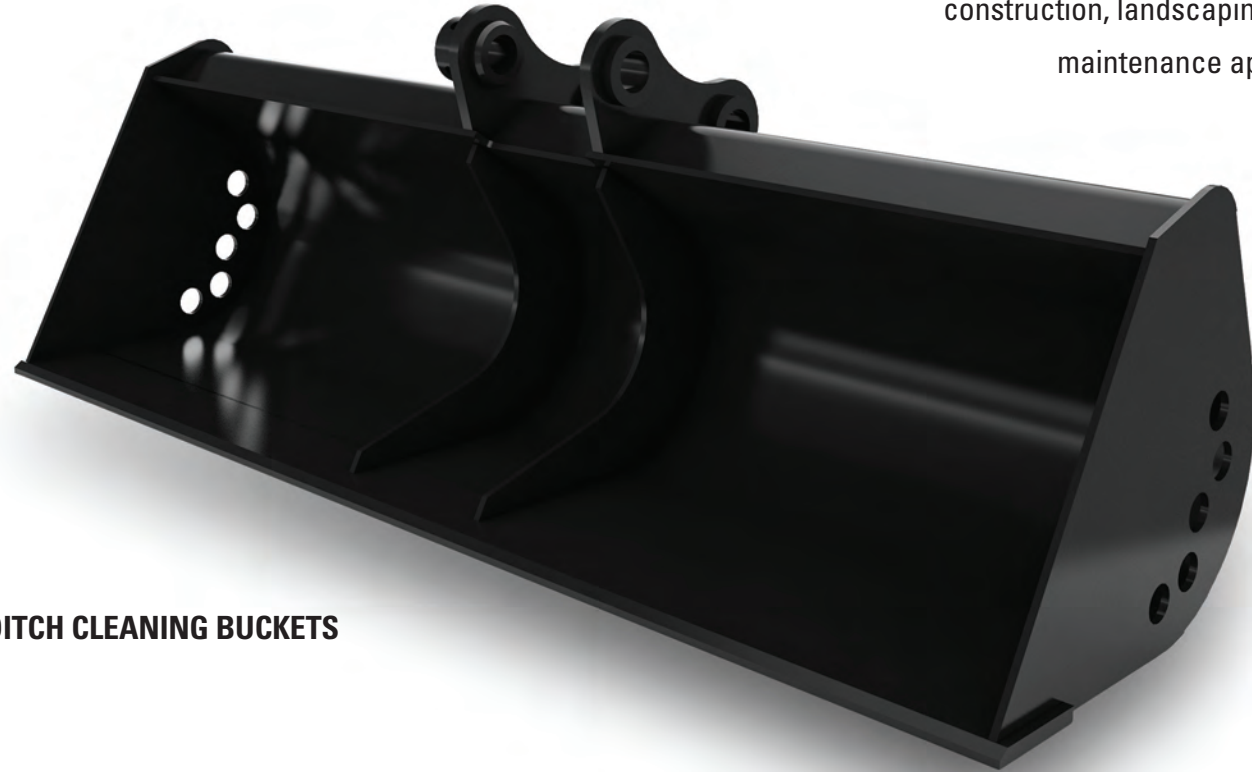
DIGGING / GENERAL PURPOSE BUCKETS							PIN ON
Machine Class	5 - 6 Ton	5 - 6 Ton	5 - 6 Ton	5 - 6 Ton	5 - 6 Ton	5 - 6 Ton	5 - 6 Ton
Interface Type	Pin-On	Pin-On	Pin-On	Pin-On	Pin-On	Pin-On	Pin-On
Width - in (mm)	12 (300)	16 (400)	18 (460)	20 (500)	24 (600)	30 (750)	35 (900)
Capacity - ft3 (L)	2.1 (60)	2.8 (80)	3.2 (90)	3.5 (100)	4.6 (130)	6 (170)	7.4 (210)
Weight - lb (kg)	174 (79)	172 (78)	185 (84)	203 (92)	225 (102)	258 (117)	313 (142)
Part Number	276-7370	276-7378	279-4283	279-4287	249-4260	279-4291	279-4295
Price	\$	\$	\$	\$	\$	\$	\$

*Buckets can not be used with 302.2D and 302.4D as buckets will come in contact with machine stick.



Ditch Cleaning Buckets are ideal

for cleaning wide trenches, loading materials, slope cutting, grading and finishing work in construction, landscaping and road maintenance applications.



DITCH CLEANING BUCKETS

DITCH CLEANING BUCKETS						PIN ON
Machine Class	< 1 Ton	1 Ton	1 Ton	2 Ton	2 Ton	2 Ton
Width - in (mm)	28 (700)	32 (800)	39 (1000)	32 (800)	39.4 (1000)	47 (1200)
Capacity - ft3 (L)	1 (27)	1.5 (42.5)	2 (56.6)	2.8 (79.3)	3.6 (101.9)	4.1 (116.1)
Weight - lb (kg)	54 (25)	89 (41)	94 (43)	180 (81)	172 (78)	193 (88)
Part Number	373-4458	147-1029	147-1031	153-7863	153-7865	153-7867
Price	\$	\$	\$	\$	\$	\$



DITCH CLEANING BUCKETS				PIN ON
Machine Class	3 - 4 Ton	3 - 4 Ton	3 - 4 Ton	3 - 4 Ton
Width - in (mm)	40 (1000)	47 (1200)	55 (1400)	47 (1200)
Capacity - ft3 (L)	4.8 (135)	5.9 (167)	7 (197)	5.6 (158.6)
Weight - lb (kg)	240 (109)	236 (107)	259 (118)	358 (162)
Part Number	279-4322	279-4323	282-9315	279-4325
Price	\$	\$	\$	\$

DITCH CLEANING BUCKETS				PIN ON
Machine Class	5 - 6 Ton	5 - 6 Ton	5 - 6 Ton	5 - 6 Ton
Width - in (mm)	40 (1000)	51 (1300)	63 (1600)	63 (1600)
Capacity - ft3 (L)	6 (169.9)	7.8 (220.3)	9.9 (279.8)	9.9 (279.8)
Weight - lb (kg)	259 (117)	261(118)	307 (139)	307 (139)
Part Number	279-4326	279-4327	279-4328	279-4328
Price	\$	\$	\$	\$



DITCH CLEANING BUCKETS					PIN ON
Machine Class	7 - 9 Ton	7 - 9 Ton	7 - 9 Ton	7 - 9 Ton	7 - 9 Ton
Width - in (mm)	48 (1219)	54 (1372)	59 (1500)	60 (1524)	71 (1800)
Capacity - ft3 (L)	11.6 (329)	13.2 (375)	8.6 (240)	14.8 (421)	10.5 (300)
Weight - lb (kg)	477 (216)	517 (235)	320 (145)	557 (253)	366 (166)
Part Number	306-5664	306-5662	310-2963*	306-5660	310-2965*
Price	\$	\$	\$	\$	\$



DITCH CLEANING BUCKETS			PIN ON
Machine Class	10 Ton	10 Ton	10 Ton
Width - in (mm)	47 (1200)	59 (1500)	71 (1800)
Capacity - ft3 (L)	9.5 (270)	12.4 (350)	14.8 (420)
Weight - lb (kg)	357 (162)	417 (189)	476 (216)
Part Number	547-7081	547-7082	547-7083
Price	\$	\$	\$

* Only available inside Europe, Africa and the Middle East.

MINI HYDRAULIC EXCAVATOR ATTACHMENTS | 2021

MINI HYDRAULIC EXCAVATOR ATTACHMENTS | 2021



DITCH CLEANING BUCKET					CW-05
Machine Class	1 Ton	2 Ton	2 Ton	3 - 4 Ton	3 - 4 Ton
Width - in (mm)	39 (1000)	39 (1000)	47 (1200)	39 (1000)	47 (1200)
Capacity - ft3 (L)	3.4 (96)	4.4 (125)	5.4 (154)	4.4 (125)	5.4 (154)
Weight - lb (kg)	135 (61)	176 (80)	205 (93)	176 (80)	205 (93)
Part Number	521-8511	521-8512	521-8513	521-8512	521-8513
Price	\$	\$	\$	\$	\$



DITCH CLEANING BUCKET					CW-10
Machine Class	5 - 6 Ton	5 - 6 Ton	7 - 9 Ton	7 - 9 Ton	
Width - in (mm)	32 (800)	55 (1400)	63 (1600)	71 (1800)	
Capacity - ft3 (L)	10.1 (286)	9 (254)	15.8 (447)	17.9 (507)	
Weight - lb (kg)	441 (200)	340 (154)	606 (275)	650 (295)	
Part Number	542-5457	542-5458	525-4558	525-4559	
Price	\$	\$	\$	\$	



DITCH CLEANING BUCKET			CW-10
Machine Class	10 Ton	10 Ton	
Width - in (mm)	63 (1600)	71 (1800)	
Capacity - ft3 (L)	15.8 (447)	17.9 (507)	
Weight - lb (kg)	606 (275)	650 (295)	
Part Number	525-4558	525-4559	
Price	\$	\$	



TILTING DITCH CLEANING BUCKET
PIN-ON

TILTING DITCH CLEANING BUCKET					CW
Machine Class	1 Ton	2 Ton	3 - 4 Ton	5 - 6 Ton	
Interface Type	CW-05	CW-05	CW-05	CW-10	
Width - in (mm)	39 (1000)	43 (1100)	47 (1200)	59 (1500)	
Capacity - yd3 (L)	2 (56)	4.4 (125)	4.7 (133)	6.3 (177)	
Weight - lb (kg)	185 (84)	309 (140)	428 (194)	573 (260)	
Part Number	244-3080	246-0093	249-4182	250-4463	
Price	\$	\$	\$	\$	

NETHERLANDS STYLE DITCH CLEANING BUCKET							CW
Machine Class	1 Ton	2 Ton	3 - 4 Ton	5 - 6 Ton	5 - 6 Ton	7 - 9 Ton	
Interface Type	CW-05	CW-05	CW-05	CW-10	CW-10	CW-10	
Width - in (mm)	39 (1000)	47 (1200)	47 (1200)	47 (1200)	55 (1400)	63 (1600)	
Capacity - ft3 (L)	3.5 (99)	4.6 (131)	6.5 (184)	8.4 (238)	10 (284)	14 (396)	
Weight - lb (kg)	137 (62)	205 (93)	254 (115)	324 (147)	364 (165)	516 (234)	
Part Number	525-4577	525-4578	525-4579	525-4580	525-4581	525-4582	
Price	\$	\$	\$	\$	\$	\$	



MINI HYDRAULIC EXCAVATOR ATTACHMENTS | 2021

Tilting Ditch Cleaning Buckets are ideal for cleaning wide trenches, loading materials, slope cutting, grading and finishing work in construction, landscaping and road maintenance applications.



**TILTING DITCH CLEANING BUCKET
PIN ON**

TILTING DITCH CLEANING BUCKET				PIN ON
Machine Class	1 Ton	2 Ton	3 - 4 Ton	5 - 6 Ton
Width - in (mm)	39 (1000)	43 (1100)	47 (1200)	63 (1600)
Capacity - ft3 (L)	2 (56)	3.9 (109.9)	5.6 (158.6)	9.9 (279.8)
Weight - lb (kg)	115 (52)	294 (133)	358 (162)	552 (251)
Part Number	244-3073	246-0094	279-4325	274-9022
Price	\$	\$	\$	\$

Grading Buckets are designed to provide optimum

grading, trenching, slope-cutting and finishing work in addition to nesting additional buckets for ease of transportation.



GRADING / MUD BUCKET

GRADING / MUD BUCKET					PIN ON
Machine Class	1 Ton	2 Ton	3 - 4 Ton	5 - 6 Ton	5 - 6 Ton
Width - in (mm)	39 (1000)	39 (1000)	47 (1200)	47 (1200)	59 (1500)
Capacity - ft3 (L)	3.1 (88.1)	6.1 (173)	8.2 (232)	9.2 (259.9)	11.6 (329.9)
Weight - lb (kg)	128 (58)	181 (82)	381 (173)	411 (186)	491 (223)
Part Number	388-9661	388-9662	388-9663	388-9664	388-9665
Price	\$	\$	\$	\$	\$

GRADING / MUD BUCKET					PIN ON
Machine Class	7 - 9 Ton	7 - 9 Ton	10 Ton	10 Ton	10 Ton
Width - in (mm)	47 (1200)	59 (1500)	47 (1200)	59 (1500)	71 (1800)
Capacity - ft3 (L)	14.5 (410.6)	18.4 (521)	15.2 (430)	19.8 (560)	24 (680)
Weight - lb (kg)	615 (279)	762 (346)	706 (320)	822 (373)	937 (425)
Part Number	388-9666	388-9667	547-7084	547-7085	547-7086
Price	\$	\$	\$	\$	\$

MINI HYDRAULIC EXCAVATOR ATTACHMENTS | 2021

DIGGING / GENERAL PURPOSE BUCKETS WITH BOLT-ON TEETH					CW-05
Machine Class	1 Ton	1 Ton	1 Ton	1 Ton	1 Ton
Width - in (mm)	12 (300)	16 (400)	18 (450)	20 (500)	24 (600)
Capacity - ft3 (L)	0.9 (25)	1.3 (37)	1.5 (43)	1.7 (49)	2.2 (61)
Weight - lb (kg)	71 (32)	79 (36)	86 (39)	93 (42)	104 (47)
Part Number	521-8494	521-8495	521-8496	521-8497	521-8498
Price	\$	\$	\$	\$	\$



DIGGING / GENERAL PURPOSE BUCKETS WITH BOLT-ON TEETH						CW-05
Machine Class	2 Ton	2 Ton	2 Ton	2 Ton	2 Ton	2 Ton
Width - in (mm)	12 (300)	16 (400)	18 (450)	20 (500)	24 (600)	28 (700)
Capacity - ft3 (L)	1.2 (33)	1.7 (48)	2 (56)	2.3 (65)	2.9 (82)	3.5 (100)
Weight - lb (kg)	86 (39)	99 (45)	106 (48)	115 (52)	128 (58)	146 (66)
Part Number	521-8499	521-8500	521-8501	521-8502	521-8503	521-8504
Price	\$	\$	\$	\$	\$	\$



DIGGING / GENERAL PURPOSE BUCKETS WITH BOLT-ON TEETH						CW-05
Machine Class	3 - 4 Ton	3 - 4 Ton	3 - 4 Ton	3 - 4 Ton	3 - 4 Ton	3 - 4 Ton
Width - in (mm)	12 (300)	16 (400)	18 (450)	20 (500)	24 (600)	28 (700)
Capacity - ft3 (L)	1.4 (41)	2.2 (61)	2.5 (72)	2.9 (82)	3.7 (105)	4.5 (127)
Weight - lb (kg)	112 (51)	130 (59)	129 (63)	152 (69)	170 (77)	192 (87)
Part Number	521-8505	521-8506	521-8507	521-8508	521-8509	521-8510
Price	\$	\$	\$	\$	\$	\$



DIGGING / GENERAL PURPOSE BUCKETS WITH BOLT-ON TEETH						CW-10
Machine Class	5 - 6 Ton	5 - 6 Ton	5 - 6 Ton	5 - 6 Ton	5 - 6 Ton	5 - 6 Ton
Width - in (mm)	12 (300)	16 (400)	18 (450)	20 (500)	24 (600)	28 (700)
Capacity - ft3 (L)	2.4 (68)	3.6 (101)	4.2 (118)	4.8 (137)	6.1 (174)	7.6 (214)
Weight - lb (kg)	254 (115)	236 (107)	267 (121)	291 (132)	267 (121)	355 (161)
Part Number	521-9312	521-9313	521-9314	521-9315	521-9316	521-9317
Price	\$	\$	\$	\$	\$	\$



MINI HYDRAULIC EXCAVATOR ATTACHMENTS | 2021



DIGGING / GENERAL PURPOSE BUCKETS WITH BASE EDGE PRE-DRILLED FOR BOLT-ON TEETH						CW-05
Machine Class	1 Ton	1 Ton	1 Ton	1 Ton	1 Ton	
Interface Type	CW-05	CW-05	CW-05	CW-05	CW-05	
Width - in (mm)	12 (300)	16 (400)	18 (450)	20 (500)	24 (600)	
Capacity - ft3 (L)	0.9 (25)	1.3 (37)	1.5 (43)	1.7 (49)	2.2 (61)	
Weight - lb (kg)	71 (32)	79 (36)	86 (39)	93 (42)	104 (47)	
Part Number	521-8514	521-8515	521-8516	521-8517	521-8518	
Price	\$	\$	\$	\$	\$	



DIGGING / GENERAL PURPOSE BUCKETS WITH BASE EDGE PRE-DRILLED FOR BOLT-ON TEETH							CW-05
Machine Class	2 Ton	2 Ton	2 Ton	2 Ton	2 Ton	2 Ton	
Interface Type	CW-05	CW-05	CW-05	CW-05	CW-05	CW-05	
Width - in (mm)	12 (300)	16 (400)	18 (450)	20 (500)	24 (600)	28 (700)	
Capacity - ft3 (L)	1.2 (33)	1.7 (48)	2 (56)	2.3 (65)	2.9 (82)	3.5 (100)	
Weight - lb (kg)	86 (39)	99 (45)	106 (48)	115 (52)	128 (58)	146 (66)	
Part Number	521-8519	521-8520	521-8521	521-8522	521-8523	521-8524	
Price	\$	\$	\$	\$	\$	\$	



DIGGING / GENERAL PURPOSE BUCKETS WITH BASE EDGE PRE-DRILLED FOR BOLT-ON TEETH							CW-05
Machine Class	3 - 4 Ton	3 - 4 Ton	3 - 4 Ton	3 - 4 Ton	3 - 4 Ton	3 - 4 Ton	
Width - in (mm)	12 (300)	16 (400)	18 (450)	20 (500)	24 (600)	28 (700)	
Capacity - ft3 (L)	1.4 (41)	2.2 (61)	2.5 (72)	2.9 (82)	3.7 (105)	4.5 (127)	
Weight - lb (kg)	113 (51)	130 (59)	140 (63)	152 (69)	170 (77)	192 (87)	
Part Number	521-8525	521-8526	521-8527	521-8528	521-8529	521-8530	
Price	\$	\$	\$	\$	\$	\$	

MINI HYDRAULIC EXCAVATOR ATTACHMENTS | 2021



DIGGING / GENERAL PURPOSE BUCKETS WITH BASE EDGE PRE-DRILLED FOR BOT								CW-10
Machine Class	5 - 6 Ton	5 - 6 Ton	5 - 6 Ton	5 - 6 Ton	5 - 6 Ton	5 - 6 Ton	5 - 6 Ton	
Interface Type	CW-10	CW-10	CW-10	CW-10	CW-10	CW-10	CW-10	
Width - in (mm)	12 (300)	16 (400)	18 (450)	20 (500)	24 (600)	28 (700)	55 (1400)	
Capacity - ft3 (L)	2.4 (68)	3.6 (101)	4.2 (118)	4.8 (137)	6.1 (174)	7.6 (214)	10.5 (298)	
Weight - lb (kg)	254 (115)	236 (107)	267 (121)	291 (132)	267 (121)	355 (161)	399 (181)	
Part Number	525-4547	525-4548	525-4549	525-4550	525-4551	525-4552	525-4557	
Price	\$	\$	\$	\$	\$	\$	\$	



DIGGING / GENERAL PURPOSE BUCKETS WITH BOLT-ON CUTTING EDGE								CW-10
Machine Class	7 - 9 Ton	7 - 9 Ton	7 - 9 Ton	7 - 9 Ton	7 - 9 Ton	7 - 9 Ton	7 - 9 Ton	
Interface Type	CW-10	CW-10	CW-10	CW-10	CW-10	CW-10	CW-10	
Width - in (mm)	16 (400)	16 (400)	24 (600)	24 (600)	32 (800)	32 (800)	55 (1400)	35 (900)
Capacity - ft3 (L)	4 (113)	4 (113)	6.9 (196)	6.9 (196)	10.1 (286)	10.1 (286)	9 (254)	12 (333)
Weight - lb (kg)	262 (119)	302 (137)	353 (160)	384 (174)	441 (200)	474 (215)	340 (154)	508 (230)
Part Number	542-5455	525-4543	542-5456	525-4544	542-5457	542-4545	542-5458	525-4546
Price	\$	\$	\$	\$	\$	\$	\$	\$



DIGGING / GENERAL PURPOSE BUCKETS WITH BOLT-ON CUTTING EDGE				CW-10
Machine Class	10 Ton	10 Ton	10 Ton	
Width - in (mm)	24 (600)	32 (800)	32 (800)	
Capacity - ft3 (L)	6.9 (196)	10.1 (286)	10.1 (286)	
Weight - lb (kg)	353 (160)	441 (200)	474 (215)	
Part Number	542-5456	542-5457	525-4545	
Price	\$	\$	\$	

MINI HYDRAULIC EXCAVATOR ATTACHMENTS | 2021



DIGGING / GENERAL PURPOSE BUCKET NETHERLANDS CW-05

Machine Class	1 Ton	2 Ton	3 - 4 Ton
Width - in (mm)	16 (400)	20 (500)	20 (500)
Capacity - ft3 (L)	11.8 (333)	3.3 (93)	3.3 (93)
Weight - lb (kg)	507 (230)	148 (67)	148 (67)
Part Number	525-4563	525-4564	525-4565
Price	\$	\$	\$

DIGGING / GENERAL PURPOSE BUCKET NETHERLANDS CW-10

Machine Class	5 - 6 Ton	5 - 6 Ton	5 - 6 Ton	5 - 6 Ton
Width - in (mm)	24 (600)	28 (700)	35 (900)	55 (1400)
Capacity - ft3 (L)	12 (333)	5.9 (168)	12.4 (352)	10.5 (298)
Weight - lb (kg)	507 (230)	265 (120)	434 (197)	399 (181)
Part Number	525-4567	525-4568	525-4569	525-4557
Price	\$	\$	\$	\$



MINI HYDRAULIC EXCAVATOR ATTACHMENTS | 2021

Cat Banana Buckets for Mini Excavators are specially made

for trenching in cohesive materials like clay for easy unloading. Open side plate and smaller widths are the main characteristics. Banana style buckets are optimal for digging perpendicular underneath pipes and cables.



TRENCHING / BANANA BUCKET CW-05

Machine Class	1 Ton	2 Ton	3 - 4 Ton	3 - 4 Ton	5 - 6 Ton
Interface Type	CW-10	CW-05	CW-05	CW-05	CW-10
Width - in (mm)	10 (250)	10 (250)	12 (300)	16 (400)	12 (300)
Capacity - ft3 (L)	0.8 (23)	1.1 (42)	2.3 (65)	3 (86)	2.6 (74)
Weight - lb (kg)	66 (30)	93 (42)	119 (54)	143 (65)	200 (91)
Part Number	542-5460	542-5461	542-5462	542-5463	542-5464
Price	\$	\$	\$	\$	\$

TRENCHING / BANANA BUCKET CW-10

Machine Class	5 - 6 Ton	5 - 6 Ton	7 - 9 Ton	10 Ton
Width - in (mm)	12 (300)	16 (400)	16 (400)	16 (400)
Capacity - ft3 (L)	2.6 (74)	3.9 (110)	5.5 (155)	5.5 (155)
Weight - lb (kg)	200 (91)	216 (98)	309 (140)	309 (140)
Part Number	542-5464	542-5465	542-5466	542-5466
Price	\$	\$	\$	\$

MINI HYDRAULIC EXCAVATOR ATTACHMENTS | 2021



**CEMETERY
BUCKETS**

CEMETERY BUCKETS		PIN ON
Machine Class	3 - 4 Ton	
Interface Type	Pin On	
Width - in (mm)	32 (813)	
Capacity - yd ³ (L)	0.16 (0.19)	
Weight - lb (kg)	273 (124)	
Part Number	415-6725	
Price	\$	

MINI HYDRAULIC EXCAVATOR ATTACHMENTS | 2021



Heavy Duty Buckets are designed for maximum performance and value over a broad range of applications in abrasive applications such as mixed dirt, clay, and rock.

HEAVY DUTY BUCKETS					PIN ON
Machine Class	3 - 4 Ton	3 - 4 Ton	3 - 4 Ton	3 - 4 Ton	3 - 4 Ton
Width - in (mm)	12 (305)	16 (406)	18 (457)	20 (508)	
Capacity - ft ³ (L)	1.7 (48)	2.5 (70.8)	2.9 (82.1)	3.3 (93.4)	
Weight - lb (kg)	143 (65)	164 (74)	181 (82)	192 (87)	
Part Number	464-9900	464-9901	464-9902	464-9903	
Price	\$	\$	\$	\$	

HEAVY DUTY BUCKETS



**GRADING /
CLEANING BUCKETS**

GRADING / CLEANING BUCKETS				PIN ON
Machine Class	3 - 4 Ton	3 - 4 Ton	5 - 6 Ton	
Width - in (mm)	32 (813)	43 (1067)	48 (1219)	
Capacity - ft ³ (L)	6.7 (0.119)	7.3 (0.207)	15 (430)	
Weight - lb (kg)	311 (141)	313 (142)	389 (176)	
Part Number	423-2737	415-5304	415-5306	
Price	\$	\$	\$	

HEAVY DUTY BUCKETS								PIN ON
Machine Class	3 - 4 Ton	3 - 4 Ton	3 - 4 Ton	3 - 4 Ton	5 - 6 Ton	5 - 6 Ton	5 - 6 Ton	
Width - in (mm)	24 (619)	20 (508)	30 (762)	36 (914)	12 (305)	16 (406)	18 (457)	
Capacity - ft ³ (L)	4.2 (118.9)	3.3 (94.4)	5.6 (158.6)	7.1 (200)	2.1 (59.5)	2.7 (76.5)	3.1 (87.8)	
Weight - lb (kg)	216 (98)	192 (87)	258 (117)	293 (133)	157 (71)	174 (79)	194 (88)	
Part Number	464-9904	535-8403	464-9905	464-9906	464-9907	464-9908	464-9909	
Price	\$	\$	\$	\$	\$	\$	\$	

**HIGH CAPACITY
BUCKET**



HIGH CAPACITY BUCKETS						1/4 YD PIN LOCK
Machine Class	7 - 9 Ton	7 - 9 Ton	7 - 9 Ton	7 - 9 Ton	7 - 9 Ton	
Width - in (mm)	16 (406)	18 (457)	24 (610)	30 (762)	36 (914)	
Capacity - ft ³ (L)	5.7 (160)	6.4 (180)	9.2 (260)	12.7 (360)	16.2 (460)	
Weight - lb (kg)	337 (153)	357 (162)	428 (194)	489 (222)	560 (254)	
Part Number	247-1954	247-1955	247-1956	247-1957	247-1958	
Price	\$	\$	\$	\$	\$	

HEAVY DUTY BUCKETS							PIN ON
Machine Class	5 - 6 Ton	5 - 6 Ton	5 - 6 Ton	5 - 6 Ton	5 - 6 Ton	5 - 6 Ton	
Width - in (mm)	20 (508)	24 (619)	24 (610)	30 (762)	36 (914)	36 (914)	
Capacity - ft ³ (L)	3.6 (101.9)	4.6 (130.3)	4.6 (130)	6.1 (172.7)	7.8 (220.9)	7.8 (220)	
Weight - lb (kg)	207 (94)	234 (106)	234 (109)	280 (127)	322 (146)	320 (148)	
Part Number	464-9910	464-9911	535-8405	464-9912	464-9913	537-7604	
Price	\$	\$	\$	\$	\$	\$	

MINI HYDRAULIC EXCAVATOR ATTACHMENTS | 2021



HEAVY DUTY BUCKETS					PIN ON
Machine Class	10 Ton	10 Ton	10 Ton	10 Ton	10 Ton
Width - in (mm)	18 (457)	24 (610)	30 (762)	36 (914)	42 (1067)
Capacity - ft3 (L)	6.4 (180)	9.5 (270)	12.4 (350)	15.9 (450)	19.1 (540)
Weight - lb (kg)	448 (203)	496 (225)	567 (257)	664 (301)	745 (338)
Part Number	547-7030	547-7031	547-7032	547-7033	547-7034
Price	\$	\$	\$	\$	\$

HEAVY DUTY BUCKETS			1/4 YD PIN LOCK			
Machine Class	7 - 9 Ton	7 - 9 Ton	7 - 9 Ton	7 - 9 Ton	7 - 9 Ton	7 - 9 Ton
Width - in (mm)	12 (300)	16 (406)	18 (457)	24 (610)	30 (762)	36 (914)
Capacity - ft3 (L)	3.4 (96)	4.2 (120)	4.9 (139)	7.3 (207)	9.9 (280)	12 (340)
Weight - lb (kg)	249 (113)	298 (135)	304 (138)	370 (168)	443 (201)	509 (231)
Part Number	247-1947	247-1948	247-1949	247-1950	247-1951	247-1952
Price	\$	\$	\$	\$	\$	\$

HEAVY DUTY BUCKETS		1/2 YD PIN LOCK		
Machine Class	10 Ton	10 Ton	10 Ton	10 Ton
Width - in (mm)	18 (463)	24 (616)	36 (921)	48 (1226)
Capacity - ft3 (L)	7.1 (200)	10.6 (300)	17.7 (500)	28.3 (800)
Weight - lb (kg)	551 (250)	664 (301)	860 (390)	1054 (478)
Part Number	527-7302	528-8034	528-8784	528-8786
Price	\$	\$	\$	\$



HEAVY DUTY BUCKETS
PIN LOCK

MINI HYDRAULIC EXCAVATOR ATTACHMENTS | 2021

HEAVY DUTY ROCK BUCKETS
PIN ON



HEAVY DUTY ROCK BUCKETS						PIN ON	
Machine Class	7 - 9 Ton	7 - 9 Ton	7 - 9 Ton	7 - 9 Ton	7 - 9 Ton	7 - 9 Ton	7 - 9 Ton
Width - in (mm)	13 (330)	18 (457)	24 (610)	30 (762)	36 (914)	24 (610)	30 (762)
Capacity - ft3 (L)	3.5 (99)	5.3 (150)	8.1 (230)	10.9 (309)	13.7 (388)	8.1 (230)	10.9 (309)
Weight - lb (kg)	300 (136)	333 (151)	394 (178)	456 (207)	507 (230)	428 (194)	492 (223)
Part Number	305-6813	295-5951	295-5952	295-5953	295-5954	295-5970	295-5971
Price	\$	\$	\$	\$	\$	\$	\$

HEAVY DUTY CAPACITY BUCKETS				PIN ON
Machine Class	5 - 6 Ton	5 - 6 Ton	5 - 6 Ton	5 - 6 Ton
Width - in (mm)	12 (305)	16 (406)	18 (457)	20 (508)
Capacity - ft3 (L)	2.9 (82.1)	3.7 (104.8)	4.4 (124.6)	5.1 (144.4)
Weight - lb (kg)	185 (84)	205 (93)	227 (103)	240 (109)
Part Number	464-9914	464-9915	464-9916	464-9917
Price	\$	\$	\$	\$

HEAVY DUTY CAPACITY BUCKETS
PIN ON



HEAVY DUTY CAPACITY BUCKETS					PIN ON
Machine Class	5 - 6 Ton	5 - 6 Ton	5 - 6 Ton	5 - 6 Ton	5 - 6 Ton
Width - in (mm)	24 (619)	24 (619)	30 (762)	36 (914)	36 (914)
Capacity - ft3 (L)	6.4 (181.2)	6.4 (181.2)	8.5 (240.7)	10.6 (300.2)	10.6 (300.2)
Weight - lb (kg)	271 (123)	271 (123)	322 (146)	368 (157)	368 (157)
Part Number	464-9918	535-8407	464-9919	464-9920	537-7606
Price	\$	\$	\$	\$	\$

MINI HYDRAULIC EXCAVATOR ATTACHMENTS | 2021

The Nordic Style bucket portfolio

has been developed to create optimal matches with a variety of MHE machine platforms in combination with quick coupler, TRS and chosen buckets in consideration of varying materials to be loaded.

NORDIC STYLE DIGGING



NORDIC STYLE DIGGING BUCKETS		S-40		
Machine Class	2 Ton	3 Ton	5 - 6 Ton	6 Ton
Width - in (mm)	20 (520)	25 (630)	27 (680)	31 (800)
Capacity - ft3 (L)	4.9 (140)	5.7 (160)	8.5 (240)	9.9 (280)
Weight - lb (kg)	220 (100)	238 (108)	417 (189)	461 (209)
Part Number	586-5953	586-5954	586-5955	601-1134
Price	\$	\$	\$	\$

NORDIC STYLE DIGGING BUCKETS		S-45		
Machine Class	7 - 9 Ton	7 - 9 Ton	10 Ton	10 Ton
Width - in (mm)	33 (830)	34 (870)	36 (920)	37 (950)
Capacity - ft3 (L)	14.1 (400)	14.1 (400)	17.7 (500)	17.7 (500)
Weight - lb (kg)	635 (288)	670 (304)	827 (375)	864 (392)
Part Number	586-5964	586-5957	601-1135	601-1136
Price	\$	\$	\$	\$

NORDIC STYLE DIGGING BUCKETS		S-50		
Machine Class	7 - 9 Ton	7 - 9 Ton	10 Ton	10 Ton
Width - in (mm)	33 (830)	34 (870)	36 (920)	37 (950)
Capacity - ft3 (L)	14.1 (400)	14.1 (400)	17.7 (500)	17.7 (500)
Weight - lb (kg)	644 (292)	650 (295)	842 (382)	880 (399)
Part Number	586-5965	586-5958	586-5966	586-5959
Price	\$	\$	\$	\$

NORDIC STYLE GRADING PIN GRABBER



NORDIC STYLE GRADING BUCKETS		PIN ON	
Machine Class	5 - 6 Ton	7 - 9 Ton	10 Ton
Width - in (mm)	47 (1200)	51 (1300)	59 (1500)
Capacity - ft3 (L)	7.4 (210)	14 (400)	17.7 (500)
Weight - lb (kg)	384 (174)	637 (289)	917 (416)
Part Number	601-1140	601-1141	601-1142
Price	\$	\$	\$

MINI HYDRAULIC EXCAVATOR ATTACHMENTS | 2021

NORDIC STYLE TRENCHING BUCKETS		S-40	
Machine Class	2 Ton	3 Ton	5 - 6 Ton
Width - in (mm)	12 (300)	12 (320)	12 (320)
Capacity - ft3 (L)	1.9 (55)	2.8 (80)	4.2 (120)
Weight - lb (kg)	121 (55)	170 (77)	214 (97)
Part Number	586-5941	586-5942	586-5943
Price	\$	\$	\$

NORDIC STYLE TRENCHING BUCKETS		S-45
Machine Class	7 - 9 Ton	
Width - in (mm)	16 (400)	
Capacity - ft3 (L)	7.8 (220)	
Weight - lb (kg)	370 (168)	
Part Number	586-5944	
Price	\$	

NORDIC STYLE TRENCHING BUCKETS		S-50
Machine Class	10 Ton	
Width - in (mm)	16 (400)	
Capacity - ft3 (L)	7.8 (220)	
Weight - lb (kg)	384 (174)	
Part Number	586-5945	
Price	\$	

NORDIC STYLE TRENCHING



NORDIC STYLE GRADING BUCKETS		S-40		
Machine Class	2 Ton	3 Ton	5 - 6 Ton	6 Ton
Width - in (mm)	39 (1000)	39 (1100)	47 (1200)	51 (1300)
Capacity - ft3 (L)	3.9 (110)	5.3 (150)	7.4 (210)	8.8 (250)
Weight - lb (kg)	207 (94)	254 (115)	346 (157)	379 (172)
Part Number	586-5946	586-5947	586-5948	601-1137
Price	\$	\$	\$	\$

NORDIC STYLE GRADING



NORDIC STYLE GRADING BUCKETS		S-45
Machine Class	7 - 9 Ton	10 Ton
Width - in (mm)	51 (1300)	59 (1500)
Capacity - ft3 (L)	14 (400)	17.7 (500)
Weight - lb (kg)	582 (264)	829 (376)
Part Number	586-5950	601-1138
Price	\$	\$

NORDIC STYLE GRADING BUCKETS		S-50
Machine Class	7 - 9 Ton	10 Ton
Width - in (mm)	51 (1300)	59 (1500)
Capacity - ft3 (L)	14 (400)	17.7 (500)
Weight - lb (kg)	595 (270)	842 (382)
Part Number	586-5951	586-5952
Price	\$	\$

MINI HYDRAULIC EXCAVATOR ATTACHMENTS | 2021

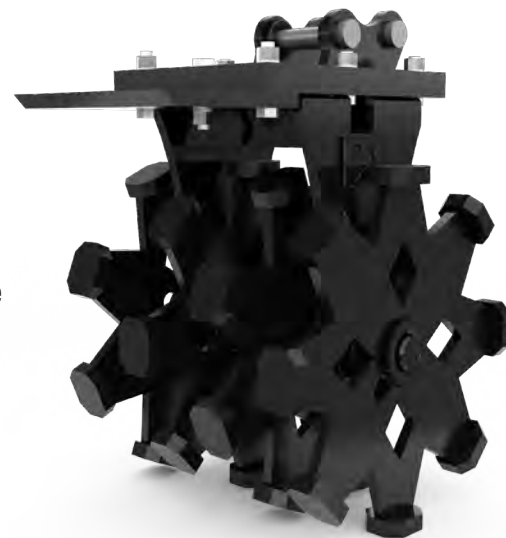
MINI HYDRAULIC EXCAVATOR ATTACHMENTS | 2021

Cat compaction wheels provide a low cost option

for trench compaction. The wheels feature tapered roller bearings and tampered foot design for smooth operation. Six to ten passes are usually adequate to achieve compaction in normal soil conditions, dependent on the required compaction levels.



COMPACTION WHEELS				PIN ON		
Machine Class	1 Ton	1 Ton	1 Ton	2 Ton	2 Ton	2 Ton
Overall Width - in (mm)	12 (292)	16 (399)	22 (553)	12 (313)	16 (399)	22 (553)
Compaction Width - in (mm)	11 (271)	16 (399)	22 (553)	11 (271)	16 (399)	22 (553)
Overall Height - in (mm)	30 (752)	31 (792)	31 (792)	31 (787)	33 (827)	33 (827)
Overall Length - in (mm)	29 (726)	27 (693)	27 (693)	29 (725)	27 (693)	27 (693)
Weight - lb (kg)	342 (155)	476 (216)	569 (258)	355 (161)	489 (222)	582 (264)
Number of Wheels	2	3	4	2	3	4
Number of Pads	16	24	32	16	24	32
Part Number	517-6970	517-6971	517-6972	517-6973	517-6974	517-6975
Price	\$	\$	\$	\$	\$	\$



COMPACTION WHEELS

Pin on compaction wheels can be used in combination with applicable pin grabber quick coupler.

COMPACTION WHEELS



COMPACTION WHEELS				PIN ON		
Machine Class	3 - 4 Ton	3 - 4 Ton	3 - 4 Ton	5 - 6 Ton	5 - 6 Ton	5 - 6 Ton
Overall Width - in (mm)	12 (309)	16 (399)	22 (553)	14 (343)	16 (399)	22 (553)
Compaction Width - in (mm)	11 (271)	16 (399)	22 (553)	11 (271)	16 (399)	22 (553)
Overall Height - in (mm)	32 (806)	33 (846)	33 (846)	33 (829)	34 (868)	34 (868)
Overall Length - in (mm)	29 (726)	27 (693)	27 (693)	29 (726)	27 (693)	27 (693)
Weight - lb (kg)	357 (162)	494 (224)	586 (266)	375 (170)	507 (230)	602 (273)
Number of Wheels	2	3	4	2	3	4
Number of Pads	16	24	32	16	24	32
Part Number	517-6976	517-6977	517-6978	517-6979	517-6980	517-6981
Price	\$	\$	\$	\$	\$	\$



COMPACTION WHEELS				PIN ON
Machine Class	7 - 9 Ton	7 - 9 Ton	7 - 9 Ton	7 - 9 Ton
Overall Width - in (mm)	13 (338)	18 (449)	22 (556)	35 (884)
Compaction Width - in (mm)	12 (306)	18 (449)	22 (556)	35 (884)
Overall Height - in (mm)	45 (1152)	46 (1165)	46 (1165)	46 (1164)
Overall Length - in (mm)	39 (998)	39 (997)	39 (997)	42 (1073)
Weight - lb (kg)	915 (415)	1228 (557)	1268 (575)	1945 (882)
Number of Wheels	2	3	3	5
Number of Pads	18	27	27	45
Part Number	517-6988	517-6989	517-6990	517-6991
Price	\$	\$	\$	\$



COMPACTION WHEELS				PIN ON
Machine Class	10 Ton	10 Ton	10 Ton	10 Ton
Overall Width - in (mm)	12.7 (323)	17.7 (449)	21.9 (556)	34.8 (884)
Compaction Width - in (mm)	12 (310)	17.7 (449)	21.9 (556)	34.8 (884)
Overall Height - in (mm)	45.5 (1155)	46 (1168)	46 (1168)	46 (1168)
Overall Length - in (mm)	39.9 (1014)	39.9 (1014)	39.9 (1014)	43 (109)
Weight - lb (kg)	959 (435)	1266 (574)	1307 (593)	1982 (889)
Number of Wheels	2	3	3	5
Number of Pads	18	27	27	45
Part Number	517-6998	517-6999	517-6998	517-7001
Price	\$	\$	\$	\$



COMPACTION WHEELS

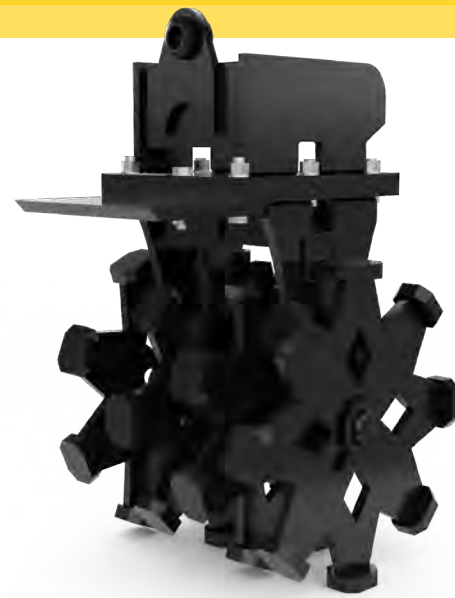


MINI HYDRAULIC EXCAVATOR ATTACHMENTS | 2021

MINI HYDRAULIC EXCAVATOR ATTACHMENTS | 2021

PIN LOCK COMPACTION WHEELS

Pin lock compaction wheels can be used with applicable pin lock coupler.



COMPACTION WHEELS	1/8 YD PIN LOCK					
Machine Class	1 Ton	1 Ton	1 Ton	1 Ton	1 Ton	1 Ton
Overall Width - in (mm)	12 (292)	16 (399)	22 (553)	12 (292)	16 (399)	22 (553)
Compaction Width - in (mm)	11 (271)	16 (399)	22 (553)	11 (271)	16 (399)	22 (553)
Overall Height - in (mm)	36 (921)	38 (961)	38 (961)	36 (901)	37 (941)	37 (941)
Overall Length - in (mm)	29 (726)	27 (693)	27 (693)	29 (726)	27 (693)	27 (693)
Weight - lb (kg)	395 (179)	529 (240)	622 (282)	390 (177)	523 (237)	617 (280)
Number of Wheels	2	3	4	2	3	4
Number of Pads	16	24	32	16	24	32
Interface Type*	Wain Roy	Wain Roy	Wain Roy	TAG	TAG	TAG
Part Number	517-6982	517-6983	517-6984	517-6985	517-6986	517-6987
Price	\$	\$	\$	\$	\$	\$

COMPACTION WHEELS	1/8 YD PIN LOCK					
Machine Class	2 Ton	2 Ton	2 Ton	2 Ton	2 Ton	2 Ton
Overall Width - in (mm)	12 (292)	16 (399)	22 (553)	12 (292)	16 (399)	29 (553)
Compaction Width - in (mm)	11 (271)	16 (399)	22 (553)	11 (271)	16 (399)	22 (553)
Overall Height - in (mm)	36 (921)	38 (961)	38 (961)	36 (901)	37 (941)	37 (941)
Overall Length - in (mm)	29 (726)	27 (693)	27 (693)	29 (726)	27 (693)	27 (693)
Weight - lb (kg)	395 (179)	529 (240)	622 (282)	390 (177)	523 (237)	617 (280)
Number of Wheels	2	3	4	2	3	4
Number of Pads	16	24	32	16	24	32
Interface Type*	Wain Roy	Wain Roy	Wain Roy	TAG	TAG	TAG
Part Number	517-6982	517-6983	517-6984	517-6985	517-6986	517-6987
Price	\$	\$	\$	\$	\$	\$

COMPACTION WHEELS	1/8 YD PIN LOCK					
Machine Class	3 - 4 Ton	3 - 4 Ton	3 - 4 Ton	3 - 4 Ton	3 - 4 Ton	3 - 4 Ton
Overall Width - in (mm)	12 (292)	16 (399)	22 (553)	12 (292)	16 (399)	22 (553)
Compaction Width - in (mm)	11 (271)	16 (399)	22 (553)	11 (271)	16 (399)	22 (553)
Overall Height - in (mm)	36 (921)	38 (961)	38 (961)	36 (901)	37 (941)	37 (941)
Overall Length - in (mm)	29 (726)	27 (693)	27 (693)	29 (726)	27 (693)	27 (693)
Weight - lb (kg)	395 (179)	529 (240)	622 (282)	390 (177)	523 (237)	617 (280)
Number of Wheels	2	3	4	2	3	4
Number of Pads	16	24	32	16	24	32
Interface Type*	Wain Roy	Wain Roy	Wain Roy	TAG	TAG	TAG
Part Number	517-6982	517-6983	517-6984	517-6985	517-6986	517-6987
Price	\$	\$	\$	\$	\$	\$

COMPACTION WHEELS	1/8 YD PIN LOCK					
Machine Class	5 - 6 Ton	5 - 6 Ton	5 - 6 Ton	5 - 6 Ton	5 - 6 Ton	5 - 6 Ton
Overall Width - in (mm)	12 (292)	16 (399)	22 (553)	12 (292)	16 (399)	22 (553)
Compaction Width - in (mm)	11 (271)	16 (399)	22 (553)	11 (271)	16 (399)	22 (553)
Overall Height - in (mm)	36 (921)	38 (961)	38 (961)	36 (901)	37 (941)	37 (941)
Overall Length - in (mm)	29 (726)	27 (693)	27 (693)	29 (726)	27 (693)	27 (693)
Weight - lb (kg)	395 (179)	529 (240)	622 (282)	390 (177)	523 (237)	617 (280)
Number of Wheels	2	3	4	2	3	4
Number of Pads	16	24	32	16	24	32
Interface Type*	Wain Roy	Wain Roy	Wain Roy	TAG	TAG	TAG
Part Number	517-6982	517-6983	517-6984	517-6985	517-6986	517-6987
Price	\$	\$	\$	\$	\$	\$

COMPACTION WHEELS	1/4 YD PIN LOCK		
Machine Class	7 - 9 Ton	7 - 9 Ton	7 - 9 Ton
Overall Width - in (mm)	12 (312)	17 (439)	22 (559)
Compaction Width - in (mm)	11 (286)	17 (439)	22 (559)
Overall Height - in (mm)	48 (1207)	47 (1181)	46 (1179)
Overall Length - in (mm)	39 (995)	39 (991)	39 (991)
Weight - lb (kg)	836 (379)	1074 (487)	1142 (518)
Number of Wheels	2	3	3
Number of Pads	18	24	27
Interface Type*	Wain Roy	Wain Roy	Wain Roy
Part Number	517-6995	517-6996	517-6997
Price	\$	\$	\$

*Wain Roy and Tag are industry versions of the interface.

MINI HYDRAULIC EXCAVATOR ATTACHMENTS | 2021

Fully compatible with Wain-Roy and Gannon-style buckets, the Cat Pin Lock/Tilt Lock Coupler system is the key to new levels of performance on any Cat Mini Excavator. New machines can take advantage of existing bucket inventory. New buckets and work tools can be shared with similarly-sized competitive machines across a fleet. One machine can fill many roles on a job site.

new levels of performance on any Cat Mini Excavator. New machines can take advantage of existing bucket inventory. New buckets and work tools can be shared with similarly-sized competitive machines across a fleet. One machine can fill many roles on a job site.



**PIN LOCK
MANUAL COUPLERS**



PIN LOCK MANUAL COUPLERS			
Machine Class	7 - 9 Ton	7 - 9 Ton	7 - 9 Ton
Interface Type - Top	Pin On	Pin On/Tilting	Pin On
Interface Type - Bottom	1/4 yd	1/4 yd	1/4 yd
Pin Diameter - in (mm)	2 (50)	1.8 (45)	1.8 (45)
Overall Height - in (mm)	16 (406)	22 (567)	17 (432)
Length - in (mm)	26 (660)	24 (605)	25 (626)
Width - in (mm)	14 (347)	17 (428)	13 (339)
Weight - lb (kg)	174 (79)	256 (116)	174 (79)
Part Number	485-0314	226-1128	226-1127
Price	\$	\$	\$

MINI HYDRAULIC EXCAVATOR ATTACHMENTS | 2021

Cat Dual Lock™ Pin Grabber couplers allow operators to change attachments in seconds, increasing job efficiency and enabling one machine to do multiple tasks. We offer two, easy-to-use options: hydraulic (controlled from the cab) and mechanical. All Cat models include primary and secondary locking systems to ensure what you put on your machine, stays on.

to change attachments in seconds, increasing job efficiency and enabling one machine to do multiple tasks. We offer two, easy-to-use options: hydraulic (controlled from the cab) and mechanical. All Cat models include primary and secondary locking systems to ensure what you put on your machine, stays on.



**DUAL LOCK™
MANUAL QUICK COUPLERS
PIN GRABBER**

DUAL LOCK™ MANUAL QUICK COUPLERS					
Machine Class	1 Ton	2 Ton	3 - 4 Ton	5 - 6 Ton	7 - 9 Ton
Interface Type - Top	Pin On	Pin On	Pin On	Pin On	Pin On
Interface Type - Bottom	Pin Grabber	Pin Grabber	Pin Grabber	Pin Grabber	Pin Grabber
Pin Diameter - in (mm)	1.2 (30)	1.4 (35)	1.6 (40)	1.8 (45)	2 (50)
Overall Height - in (mm)	7 (179)	8 (192)	9 (221)	12 (292)	15 (370)
Length - in (mm)	12 (297)	14 (358)	17 (429)	21 (528)	23 (591)
Width - in (mm)	7 (182)	9 (240)	11 (269)	12 (298)	12 (292)
Weight - lb (kg)	35 (16)	38 (17)	82 (37)	124 (56)	196 (89)
Part Number	361-1092	361-1093	444-7494	444-7496	444-7498
Price	\$	\$	\$	\$	\$

MINI HYDRAULIC EXCAVATOR ATTACHMENTS | 2021

MINI HYDRAULIC EXCAVATOR ATTACHMENTS | 2021

CW Quick Couplers increase the utilization

of an excavator by becoming an all-purpose tool carrier. Simply release one work tool attachment and pick up another in a matter of seconds. Available in hydraulic or manual (spindle) versions.



QUICK COUPLERS					CW-05			
Machine Class	1 Ton	1 Ton	1 Ton	1 Ton				
Interface Type - Top	Pin On	Pin On	Pin On	Pin On				
Interface Type - Bottom	CW-05	CW-05	CW-05	CW-05				
Coupler Type	Manual	Manual	Hydraulic	Hydraulic				
Lifting Hook	NO	YES	NO	YES				
Lifting Hook Capacity- lb (kg)	N/A	1323 (600)	N/A	1323 (600)				
Pin Diameter - in (mm)	1.2 (30)	1.2 (30)	1.2 (30)	1.2 (30)				
Overall Height - in (mm)	9 (239)	9 (239)	9 (239)	9 (239)				
Length - in (mm)	14 (349)	17 (439)	14 (355)	17 (439)				
Width - in (mm)	9 (235)	9 (235)	9 (235)	9 (235)				
Weight - lb (kg)	46 (21)	55 (25)	49 (22)	57 (26)				
Part Number	589-8421	589-8424	525-4593	525-4596				
Price	\$	\$	\$	\$				

QUICK COUPLERS									CW-05			
Machine Class	2 Ton	2 Ton	2 Ton	2 Ton	3 - 4 Ton	3 - 4 Ton	3 - 4 Ton	3 - 4 Ton				
Interface Type - Top	Pin On	Pin On	Pin On	Pin On	Pin On	Pin On	Pin On	Pin On				
Interface Type - Bottom	CW-05	CW-05	CW-05	CW-05	CW-05	CW-05	CW-05	CW-05				
Coupler Type	Manual	Manual	Hydraulic	Hydraulic	Manual	Manual	Hydraulic	Hydraulic				
Lifting Hook	NO	YES	NO	YES	NO	YES	NO	YES				
Lifting Hook Capacity- lb (kg)	N/A	1323 (600)	N/A	1323 (600)	N/A	1323 (600)	N/A	1323 (600)				
Pin Diameter - in (mm)	1.4 (35)	1.4 (35)	1.4 (35)	1.4 (35)	1.6 (40)	1.6 (40)	1.2 (30)	1.2 (30)				
Overall Height - in (mm)	10 (244)	10 (244)	10 (244)	10 (244)	10 (251)	10 (251)	9 (239)	10 (251)				
Length - in (mm)	14 (355)	17 (443)	14 (362)	17 (443)	15 (376)	18 (462)	17 (439)	18 (462)				
Width - in (mm)	9 (235)	10 (248)	10 (248)	10 (248)	9 (235)	10 (262)	9 (235)	10 (262)				
Weight - lb (kg)	55 (25)	64 (29)	57 (26)	66 (30)	55 (25)	64 (29)	57 (26)	66 (30)				
Part Number	589-8422	589-8425	525-4594	525-4597	589-8423	589-8426	525-4595	525-4598				
Price	\$	\$	\$	\$	\$	\$	\$	\$				

QUICK COUPLERS								CW-10	
Machine Class	3 - 4 Ton	3 - 4 Ton	3 - 4 Ton	3 - 4 Ton	5 - 6 Ton	5 - 6 Ton	5 - 6 Ton		
Interface Type - Top	Pin-On	Pin-On	Pin-On	Pin-On	Pin-On	Pin-On	Pin-On		
Interface Type - Bottom	CW-10	CW-10	CW-10	CW-10	CW-10	CW-10	CW-10		
Coupler Type	Manual	Manual	Hydraulic	Hydraulic	Manual	Manual	Hydraulic		
Lifting Hook	NO	YES	NO	YES	NO	YES	YES		
Pin Diameter - in (mm)	1.4 (35)	1.6 (40)	1.6 (40)	1.6 (40)	1.6 (40)	1.8 (45)	1.8 (45)		
Overall Height - in (mm)	10 (244)	13 (320)	13 (317)	13 (317)	10 (251)	13 (331)	12 (308)		
Length - in (mm)	17 (443)	23 (593)	19 (486)	23 (592)	18 (462)	24 (608)	24 (608)		
Width - in (mm)	10 (248)	15 (382)	15 (382)	15 (382)	10 (262)	15 (382)	15 (382)		
Weight - lb (kg)	64 (29)	150 (68)	132 (60)	150 (68)	64 (29)	154 (70)	154 (70)		
Part Number	525-4605	525-4608	525-4611	525-4613	525-4606	525-4609	525-4614		
Price	\$	\$	\$	\$	\$	\$	\$		

QUICK COUPLERS							CW-10	
Machine Class	7 - 9 Ton	7 - 9 Ton	7 - 9 Ton	7 - 9 Ton	10 Ton	10 Ton		
Interface Type - Top	Pin-On	Pin-On	Pin-On	Pin-On	Pin-On	Pin-On		
Interface Type - Bottom	CW-10	CW-10	CW-10	CW-10	CW-10	CW-10		
Coupler Type	Manual	Manual	Hydraulic	Hydraulic	Hydraulic	Hydraulic		
Lifting Hook	NO	YES	NO	YES	NO	YES		
Pin Diameter - in (mm)	2 (50)	2 (50)	2 (50)	2 (50)	2.4 (60)	2.4 (60)		
Overall Height - in (mm)	13 (331)	13 (331)	13 (330)	13 (330)	17 (423)	13 (320)		
Length - in (mm)	21 (527)	25 (635)	21 (524)	25 (635)	28 (706)	28 (713)		
Width - in (mm)	15 (382)	15 (382)	15 (382)	15 (382)	15 (382)	15 (383)		
Weight - lb (kg)	163 (74)	183 (83)	165 (75)	183 (83)	185 (84)	203 (92)		
Part Number	525-4607	525-4610	525-4612	525-4615	542-5450	542-5447		
Price	\$	\$	\$	\$	\$	\$		

KIT - HYDRAULIC QUICK COUPLER LINES								CW-05 / CW-10	
Machine Class	3 Ton	3 Ton	5 - Ton	5 - Ton	7 - 9 Ton	7 - 9 Ton	10 Ton		
Part Number	373-2370	384-5013	373-2375	384-5015	373-4405	576-1164	576-1165		
Price	\$	\$	\$	\$	\$	\$	\$		

MINI HYDRAULIC EXCAVATOR ATTACHMENTS | 2021

MINI HYDRAULIC EXCAVATOR ATTACHMENTS | 2021

**DUAL LOCK
HYDRAULIC
QUICK COUPLERS
PIN GRABBER**



DUAL LOCK HYDRAULIC QUICK COUPLERS			PIN ON	
Machine Class	3 - 4 Ton	5 - 6 Ton	7 - 9 Ton	10 Ton
Interface Type - Top	Pin On	Pin On	Pin On	Pin On
Interface Type - Bottom	Pin Grabber	Pin Grabber	Pin Grabber	Pin Grabber
Pin Diameter - in (mm)	1.6 (40)	1.8 (45)	2 (50)	2.4 (60)
Overall Height - in (mm)	11 (266)	11 (272)	14 (347)	14 (348)
Length - in (mm)	17 (423)	21 (528)	23 (595)	31 (775)
Width - in (mm)	10 (252)	11 (272)	15 (370)	15 (379)
Weight - lb (kg)	90 (41)	170 (77)	212 (96)	337 (153)
Part Number	485-5300	485-5301	485-5302	485-5306
Price	\$	\$	\$	\$

S Type Couplers for Mini Excavators are an optimal design

for a dedicated quick coupler solution. Low offset, Pin Grabber ability, and a wedge type locking system ensures a tight fit, no attachment play during use. It also creates the solution to exchange worktools among different platforms and brands. In combination with the Tilt Rotate System that can be equipped with an S Type Coupler and the variety of different buckets offered, it provides a complete attachment solution for Mini Excavators.

**S TYPE HYDRAULIC
QUICK COUPLERS**



S TYPE HYDRAULIC QUICK COUPLERS			PIN ON	
Machine Class	7 - 9 Ton	7 - 9 Ton	10 Ton	10 Ton
Interface Type - Top	Pin On	Pin On	Pin On	Pin On
Interface Type - Bottom	S-50	S-50	S-50	S-50
Hydraulic Locking Control System	No	Yes	No	Yes
Pin Diameter - in (mm)	2 (50)	2 (50)	2.4 (60)	2.4 (60)
Overall Height - in (mm)	12.5 (318)	12.5 (318)	13 (330)	13 (330)
Length - in (mm)	25 (630)	25 (630)	27 (689)	27 (689)
Width - in (mm)	14 (343)	14 (343)	14 (353)	14 (353)
Weight - lb (kg)	197 (89)	197 (89)	215 (98)	215 (98)
Lifting hook capacity- lb (kg)	6614 (3000)	6614 (3000)	6614 (3000)	6614 (3000)
Part Number	576-1200	576-1201	576-1202	576-1203
Price	\$	\$	\$	\$



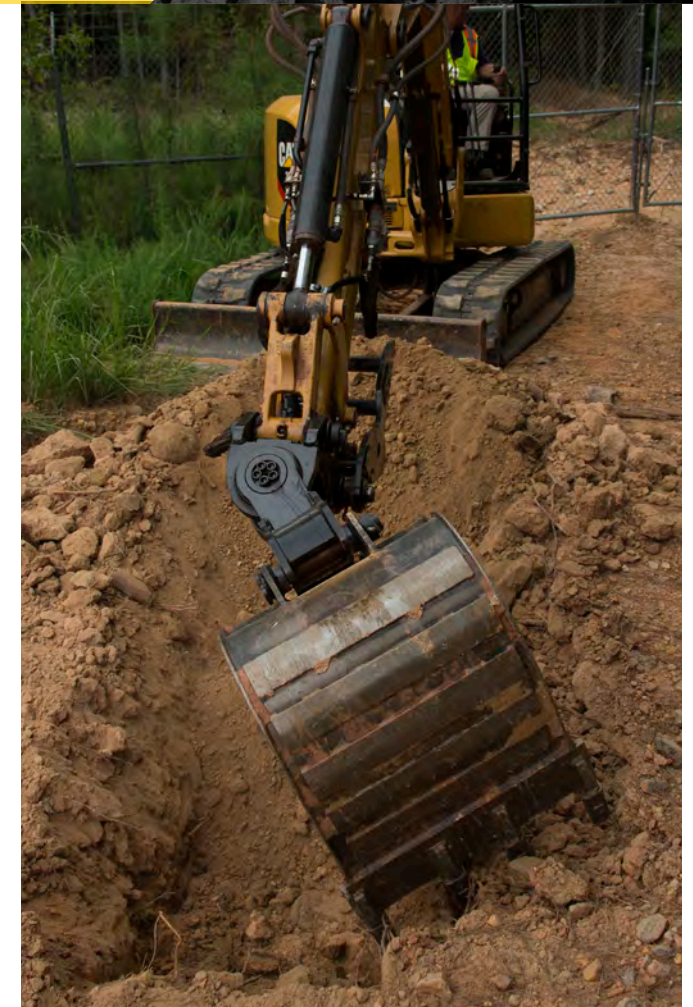
**TILTING DUAL LOCK
PIN GRABBER HYDRAULIC
QUICK COUPLERS**

Mini Excavator Tilting Dual Lock Pin Grabber Couplers allow work tools to be changed quickly

improving overall production and increasing machine versatility. The Tilting Dual Lock Coupler maintains a tight fit with an innovative wedge design throughout the life of the coupler. It can be used with compatible pin-on work tools and in front shovel mode with buckets.

TILTING DUAL LOCK HYD QUICK COUPLERS PIN ON

Machine Class	5 - 6 Ton	7 - 9 Ton
Interface Type - Top	Pin On	Pin On
Interface Type - Bottom	Pin Grabber	Pin Grabber
Pin Diameter - in (mm)	1.8 (45)	2 (50)
Overall Height - in (mm)	22 (546)	24 (601)
Length - in (mm)	23 (574)	25 (622)
Width - in (mm)	12 (298)	15 (370)
Weight - lb (kg)	256 (116)	198 (90)
Part Number	485-5304	485-5305
Price	\$	\$

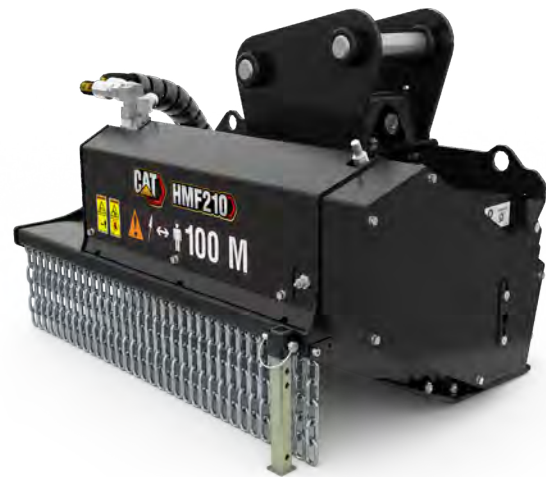


MINI HYDRAULIC EXCAVATOR ATTACHMENTS | 2021

Cat Flail Mowers are designed for high performance cutting of vegetation, saplings, overgrown agricultural areas, retention ponds, and forested terrain. The hydraulic flail mowers reduce weeds, saplings, shrubs and small trees into mulched material, making them ideal for environmental maintenance applications, such as mowing along ditches, fence rows and retention ponds, controlling overgrowth, and cleaning up high banks and slopes.



FLAIL MOWERS (INCLUDES PIN ON BRACKET)	PIN ON	
MODEL	HMF110	HMF210
Machine Class	5 - 6 Ton	7 - 9 Ton
Overall Width - in (mm)	47 (1184)	47 (1184)
Working Width - in (mm)	39 (1000)	39 (1000)
Overall Height - in (mm)	29 (741)	30 (766)
Overall Length - in (mm)	33 (842)	33 (842)
Weight - lb (kg)	831 (377)	844 (383)
Required Hydraulics	First Auxiliary	First Auxiliary
Part Number	504-6010	504-6011
Price	\$	\$



FLAIL MOWERS

KIT - CASE DRAIN		
Machine Class	5 - 6 Ton	7 - 9 Ton
Part Number	504-6159	504-6011
Price	\$	\$

BRACKET	
Machine Class	10 Ton
Part Number	581-7634*
Price	\$

*Bracket for HMF210 only.

MINI HYDRAULIC EXCAVATOR ATTACHMENTS | 2021

Cat Hammers are high performance breakers, designed for maximum performance on demolition, construction and road work. Check with your local Cat dealer for the mounting bracket and hydraulic lines to match the hammer of choice.



**HAMMERS
(2 TOOLS INCLUDED)**



HAMMERS	B1	B1s	B1	B2	B2s
Height Without Tool - in (mm)	27 (688)	29 (727)	29 (748)	30 (754)	31 (795)
Overall Height - in (mm)	38 (968)	39 (977)	38 (958)	43 (1080)	43 (1091)
Overall Length - in (mm)	12 (300)	12 (300)	7 (185)	12 (300)	12 (300)
Overall Width - in (mm)	13 (340)	13 (340)	8 (208)	13 (340)	13 (340)
Tool Shaft Diameter	1.6 (40)	1.6 (40)	1.6 (40)	1.8 (45)	1.8 (45)
Operating Weight - With Tool - lb (kg)	183 (83)	190 (86)	162 (74)	253 (115)	258 (117)
Min Operating Pressure - psi (kPa)	1276 (8798)	1276 (8798)	1276 (8798)	1276 (8798)	1276 (8798)
Sound - dB	122	118	122	128	122
Required Hydraulics	First Auxiliary	First Auxiliary	First Auxiliary	First Auxiliary	First Auxiliary
Part Number	532-9101	532-9201	573-4711*	532-9102	532-9202
Price	\$	\$	\$	\$	\$

*Pin-On for 300.9D only.



**HAMMER TOOL KIT
INCLUDED WITH B HAMMERS**

MINI HYDRAULIC EXCAVATOR ATTACHMENTS | 2021

MINI HYDRAULIC EXCAVATOR ATTACHMENTS | 2021

HAMMERS (CONT.)		TOP MOUNT		
MODEL	B4	B4s	B6	B6s
Height Without Tool - in (mm)	33 (830)	34 (871)	37 (948)	39 (999)
Overall Height - in (mm)	48 (1224)	49 (1234)	56 (1422)	57 (1439)
Overall Length - in (mm)	11.8 (300)	11.8 (300)	12.4 (316)	12.4 (316)
Overall Width - in (mm)	13 (340)	13 (340)	17 (440)	17 (440)
Tool Shaft Diameter	2.1 (53)	2.1 (53)	2.7 (68)	2.7 (68)
Operating Weight - With Tool - lb (kg)	351 (159)	357 (162)	571 (259)	611 (277)
Minimum Operating Pressure - psi (kPa)	1492 (10286)	1492 (10286)	1775 (12238)	1775 (12238)
Sound - dB	128	124	128	124
Required Hydraulics	First Auxiliary	First Auxiliary	First Auxiliary	First Auxiliary
Part Number	532-9104	532-9204	532-9106	532-9206
Price	\$	\$	\$	\$

HAMMERS (CONT.)		TOP MOUNT		
MODEL	B8	B8s	B9	B9s
Height Without Tool - in (mm)	40 (1005)	41 (1050)	51 (1298)	51 (1296)
Overall Height - in (mm)	56 (1412)	56 (1420)	69 (1753)	68 (1733)
Overall Length - in (mm)	12 (316)	12 (316)	21 (530)	21 (530)
Overall Width - in (mm)	17 (440)	17 (440)	16 (400)	16 (400)
Tool Shaft Diameter	3 (75)	3 (75)	3.4 (85)	3.4 (85)
Operating Weight - With Tool - lb (kg)	1005 (456)	992 (450)	1166 (529)	1142 (518)
Minimum Operating Pressure - psi (kPa)	1704 (11749)	1704 (11749)	1846 (12728)	1846 (12728)
Sound - dB	133	129	135	125
Required Hydraulics	First Auxiliary	First Auxiliary	First Auxiliary	First Auxiliary
Part Number	532-9108	532-9208	532-9109	532-9209
Price	\$	\$	\$	\$



HAMMERS		SIDE MOUNT			
MODEL	B2 Side Mount	B4 Side Mount	B6 Side Mount	B8 Side Mount	
Machine Class	1 Ton	3 Ton	5 Ton	8 Ton	
Pin Diameter - in (mm)	1.2 (30)	1.6 (40)	1.8 (45)	2 (50)	
Height Without Tool - in (mm)	30 (750)	32 (822)	37 (926)	40 (1016)	
Overall Height - in (mm)	42 (1076)	47 (1182)	53 (1353)	58 (1484)	
Overall Length - in (mm)	15 (391)	18.7 (476)	26 (671)	29 (730)	
Overall Width - in (mm)	9 (217)	10.9 (277)	14 (355)	15 (385)	
Tool Shaft Diameter	1.8 (45)	2.1 (53)	2.7 (68)	3 (75)	
Operating Weight - With Tool - lb (kg)	273 (124)	326 (148)	562 (255)	774 (351)	
Minimum Operating Pressure - psi (kPa)	1276 (8800)	1492 (10286)	1775 (12238)	1704 (11749)	
Sound - dB	128	128	128	133	
Required Hydraulics	First Auxiliary	First Auxiliary	First Auxiliary	First Auxiliary	
Part Number	576-5540	532-9304	532-9306	532-9308	
Price	\$	\$	\$	\$	

MINI HYDRAULIC EXCAVATOR ATTACHMENTS | 2021

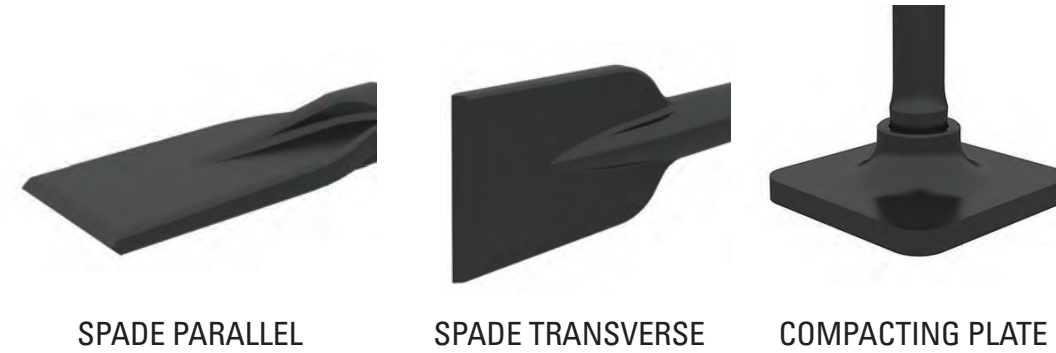
MINI HYDRAULIC EXCAVATOR ATTACHMENTS | 2021



**HAMMER TOOL KIT
INCLUDED WITH H HAMMERS**



HAMMERS						TOP MOUNT
MODEL	H35s	H45s	H55s	H65s	H80s	H95s
Height Without Tool - in (mm)	24 (620)	29 (737)	31 (784)	38 (953)	42 (1057)	49 (1250)
Overall Height - in (mm)	34 (860)	40 (1006)	44 (1108)	52 (1324)	56 (1433)	66 (1666)
Overall Length - in (mm)	12 (311)	12 (311)	18 (451)	18 (451)	21 (535)	21 (520)
Overall Width - in (mm)	12 (300)	12 (300)	14 (346)	14 (346)	19 (485)	20 (512)
Tool Shaft Diameter	1.6 (40)	2 (50)	2.3 (58)	2.7 (68)	3 (75)	3.4 (87.5)
Operating Weight - Without Tool - lb (kg)	214 (97)	265 (120)	459 (208)	534 (242)	725 (329)	1109 (503)
Minimum Operating Pressure - psi (kPa)	1450 (10000)	1450 (10000)	1450 (10000)	1450 (10000)	1450 (10000)	1450 (10000)
Sound - dB	120	120	120	124	120	124
Required Hydraulics	First Auxiliary	First Auxiliary	First Auxiliary	First Auxiliary	First Auxiliary	First Auxiliary
Part Number	561-2548	561-2549	561-2551	561-2552	561-2553	561-2555
Price	\$	\$	\$	\$	\$	\$



SPADE PARALLEL

SPADE TRANSVERSE

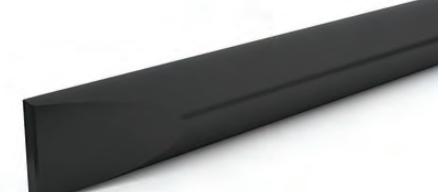
COMPACTING PLATE



CONE



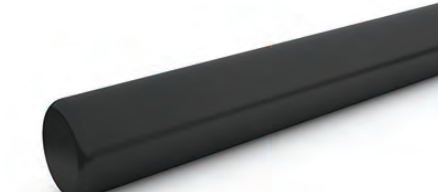
MOIL



CHISEL
CROSSCUT



CHISEL
INLINE



BLUNT

HAMMER - TOOLS			
Tool	B1	B1*	B2
Moil	532-9151	—	532-9175
Price	\$	\$	\$
Chisel, Inline	542-1752	576-5523*	542-1756
Price	\$	\$	\$
Chisel, Crosscut	542-1753	576-5524*	542-1757
Price	\$	\$	\$
Cone	542-1750	565-6082*	542-1754
Price	\$	\$	\$
Blunt	542-1751	—	542-1755
Price	\$	\$	\$

**These are the shorter (360 mm) versions, for use with the 300.9D.*

HAMMER - TOOLS				
Tool	B4	B6	B8	B9
Moil	532-9190	523-3193	532-9120	532-9219
Price	\$	\$	\$	\$
Chisel, Inline	542-1760	523-3191	532-9121	542-1764
Price	\$	\$	\$	\$
Chisel, Crosscut	542-1761	523-3197	532-9119	542-1765
Price	\$	\$	\$	\$
Cone	542-1758	523-3195	532-9118	542-1762
Price	\$	\$	\$	\$
Blunt	542-1759	523-3196	532-9117	542-1763
Price	\$	\$	\$	\$

MINI HYDRAULIC EXCAVATOR ATTACHMENTS | 2021

MINI HYDRAULIC EXCAVATOR ATTACHMENTS | 2021



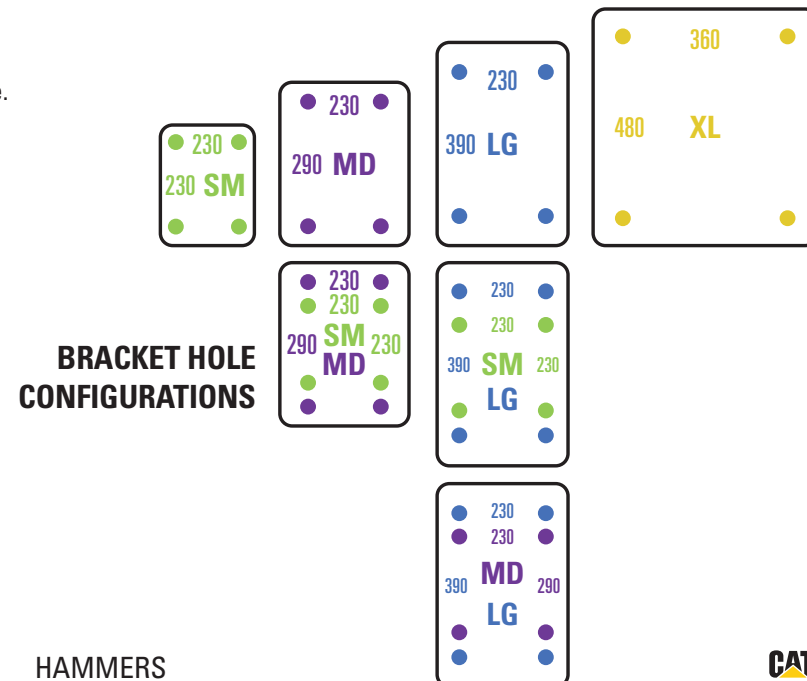
HAMMER - TOOLS						
Tool	H35s	H45s	H55s	H65s	H80s	H95s
Chisel, Inline	423-8333	423-8327	423-8310	423-8307	369-1549	369-0793
Price	\$	\$	\$	\$	\$	\$
Chisel, Crosscut	428-8033	428-8025	428-8024	248-8022	399-1711	399-1710
Price	\$	\$	\$	\$	\$	\$
Cone	423-8334	423-8329	423-8312	423-8308	369-1548	369-0792
Price	\$	\$	\$	\$	\$	\$
Blunt	423-8336	423-8331	423-8314	423-8309	376-7947	373-7159
Price	\$	\$	\$	\$	\$	\$
Spade Parallel	433-9659	423-9657	433-9655	433-9653	381-6720	N/A
Price	\$	\$	\$	\$	\$	\$
Spade Transverse	433-9658	433-9656	433-9654	433-9652	381-6719	N/A
Price	\$	\$	\$	\$	\$	\$
Compacting Plate	433-9645	433-9646	433-9648	433-9651	381-6721	N/A
Price	\$	\$	\$	\$	\$	\$

CHOOSE HAMMER ATTACHMENT				CHOOSE BRACKET							
	Hole Spacing (mm x mm)	B Prefix	H Prefix	CVP	SM	SM-MD	MD	MD-LG	SM-LG	LG	XL
SM	230 x 230	B1, B2, B4 [^]		CVP16	Yes	Yes			Yes		
MD	230 x 290	B4 [^]	H35, H45			Yes	Yes	Yes			
LG	230 x 390	B6, B8	H55, H65	CVP16				Yes	Yes	Yes	
XL	360 x 480	B9	H80, H95	CVP40							Yes

BRACKET COMPATIBILITY NOTES

- B Prefix and H Prefix Hammer Brackets are interchangeable.
- Brackets are identified by size to help with matching. For example: the SM-MD bracket has holes for 230 mm x 230 mm and 230 mm x 290 mm. It will accept B1, B2, B4, H35 and H45 Hammers.

[^] The B4 Hammer has holes for the SM and MD pattern. CVP16 and CVP40 also use this bracket system.



- 1 Choose hammer.
- 2 Choose machine and coupler.
- 3 Find compatible bracket at intersection.
- 4 Several brackets below have multiple hole spacings for increased compatibility with hammers. These part numbers are repeated in the respective columns.

BCP ATTACHMENTS HAMMER COMPATIBILITY GUIDE

Machine	Models	Coupler	Pin Diameter/Size	H Prefix (S & NS)	H35, H45	H55, H65	H80, H95	
				B Prefix (S & NS)	B1, B2, B4	B4	B6, B8	B9
				Hammer Hole Spacing (mm x mm)	230 x 230	230 x 290	230 x 390	360 x 480
Machine	Models	Coupler	Pin Diameter/Size	SM	MD	LG	XL	
MHE 300.9	300.9	PG	25-25 mm					
MHE 1T	301.4C - 301.8C	PG	30-30 mm	532-9055				
MHE 2T	302.2D - 302.7D CR	PG	35-35 mm	532-9057	532-9057	249-1144		
MHE 3-4T	303 - 304.5	PG	40-40 mm	532-9059		532-9063		
MHE 5-6T	305 - 306	PG	45-45 mm	569-5414	569-5414	316-0412 569-5414		
MHE 7-9T	307 - 309	PG	50-50 mm			532-9067	564-9840	
MHE 10T	310	PG	60-60 mm				564-9843	
STEX		PG	65-65 mm				393-7732	
		CW-05	—	442-9851	442-9851 442-9815	450-9815		
		CW-10	—		440-3180	440-3180	415-6111	
		PL	1/4 YD			443-7285	416-8031	
		PL	1/2 YD				564-2732	

HAMMER - LINES

Machine Class	1 Ton	2 Ton	3 Ton	5 - 8 Ton	7 - 10 Ton
Hammer Compatibility	B1, B2	B1, B2, B4	B4, B6	B6, B8	B9
Part Number	532-9086	532-9087	532-9088	532-9089	580-9885
Price	\$	\$	\$	\$	\$

HAMMER - LINES

Machine Class	1 Ton	2 Ton	3 - 5 Ton	5 Ton	8 Ton	8 - 10 Ton
Hammer Compatibility	H35s	H45s	H55s	H55s, H65s	H65s	H80s, H95s
Part Number	290-3181	292-0231	330-5359	270-8682	353-8830	397-2420
Price	\$	\$	\$	\$	\$	\$

MINI HYDRAULIC EXCAVATOR ATTACHMENTS | 2021

Cat Mulchers are designed for high performance cutting and mulching of vegetation, saplings, and undergrowth from overgrown agricultural areas and forested terrain. The hydraulic mulchers reduce saplings, shrubs and trees into mulched material, making it ideal for environmental maintenance, such as brush clearing and creating fire lanes. Other applications include: reclaiming untilled land, removing foliage from building construction sites and shredding pruned material and organic waste for biomass production.



MULCHERS



MULCHERS (INCLUDES BRACKET)		
MODEL	HM208	HM210
Machine Class	7 - 9 Tons	7 - 9 Tons
Overall Width - in (mm)	40 (1026)	48 (1226)
Working Width - in (mm)	32 (818)	40 (1012)
Overall Height - in (mm)	42 (1065)	42 (1065)
Overall Length - in (mm)	28 (714)	28 (714)
Weight - lb (kg)	1080 (490)	1091 (540)
Required Hydraulics	First Auxiliary	First Auxiliary
Part Number	504-6012	504-6013
Price	\$	\$

KIT - SWITCH		
Machine Class	8 Ton*	7 - 10 Ton**
Part Number	523-5933	557-5072
Price	\$	\$

BRACKET	
Machine Class	10 Ton
Part Number	581-7636
Price	\$

KIT - CASE DRAIN	
Machine Class	8 Ton
Part Number	504-6156
Price	\$

*308E2 ONLY.
**307.5, 308CR, 309CR, 310 Next Gen ONLY.

MINI HYDRAULIC EXCAVATOR ATTACHMENTS | 2021

Cat Excavator Rakes are used for grubbing, piling, and loading trucks and grinders in the General Construction and Forestry industries.



RAKE	
Machine Class	7 - 9 Ton
Overall Width - in (mm)	27 (690)
Overall Height - in (mm)	41 (1029)
Overall Length - in (mm)	49 (1238)
Weight - lb (kg)	671 (304)
Part Number	456-5071
Price	\$

SCRAP SHEAR	
Machine Class	5 - 9 Ton
Height - in (mm)	26 (667)
Width - in (mm)	15 (390)
Length - in (mm)	67 (1709)
Jaw Opening - in (mm)	9 (240)
Required Hydraulics	2 nd Auxiliary
Weight - lb (kg)	1213 (550)
Part Number	583-8100
Price	\$
Lines Gp	231-7108
Price	\$
Bracket, S308 7 - 9 Ton	583-8120
Price	\$
Lines Gp, S308, 7 - 9 Ton	359-9831
Price	\$
Boom Mounted bracket 305D/E CR	283-4187
Price	\$
Boom Mounted bracket 305.5E CR	449-9083
Price	\$
Stick Mounted bracket	N/A
Price	\$



SCRAP SHEAR

Cat Shears rotate 360 degrees for rapid repositioning and are designed with a straight, lower jaw to improve the cutting force.

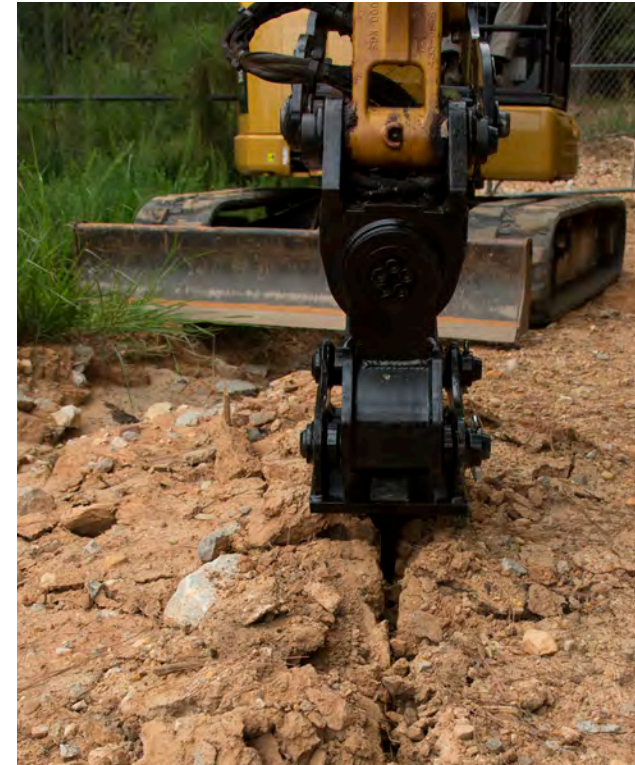
MINI HYDRAULIC EXCAVATOR ATTACHMENTS | 2021



RIPPER

Built to cut through dense dirt, loosen rocky soil and break below the frost layer,

Cat Rippers are taking on some of the most challenging ground conditions. And because they are made for specific Cat models, they can better transfer machine power into ripping power.



RIPPERS	PIN ON			
Machine Class	3 - 4 Ton	5 - 6 Ton	7 - 9 Ton	10 Ton
Size - in (mm)	19 (490)	27 (676)	34 (861)	37 (947)
Part Number	453-8570	453-8571	453-8572	546-4141
Price	\$	\$	\$	\$



GRAPPLE

Contractors' Grapples are a proven product built for your high-volume material handling needs.

GRAPPLE	PIN ON / PIN GRABBER
MODEL	G108
Machine Class	7 - 9 Ton
Part Number	583-5312
Price	\$

MINI HYDRAULIC EXCAVATOR ATTACHMENTS | 2021

Cat Thumbs are versatile tools designed to work with the Cat Mini Hydraulic Excavator bucket to easily grab, pick up, handle and load irregular or loose material such as poles, brush, metal, trash, rock and more, which would otherwise be difficult to handle with a bucket only.



THUMBS - HYDRAULIC	PIN ON			
Machine Class	1 Ton	2 Ton	3 - 4 Ton	5 - 6 Ton
Part Number	555-8424	451-6380	452-2740	575-0496
Price	\$	\$	\$	\$

BRACKET	PIN ON
Machine Class	2 Ton
Interface Type	Pin On
Part Number	204-4972
Price	\$



MOUNTING BRACKET
Required for all thumbs and grapples with out thumb ready sticks



THUMBS - HYDRAULIC	PIN ON / PIN GRABBER				
Machine Class	7 - 9 Ton	7 - 9 Ton	7 - 9 Ton	7 - 9 Ton	10 Ton
Hydraulic Pin-On	Pin On	Pin Grabber	Pin On	Pin Grabber	Pin On
Link Style	No	No	Yes	Yes	No
Part Number	305-6740	305-6741	305-6744	305-6745	540-6735
Price	\$	\$	\$	\$	\$

THUMBS - HYDRAULIC FOR 302.5C	PIN ON
Machine Class	2 Ton
Type	Pin On
Part Number	291-1429
Price	\$



THUMBS - STIFF LINK	PIN ON / PIN GRABBER	
Machine Class	7 - 9 Ton	7 - 9 Ton
Hydraulic Pin-On	Pin On	Pin Grabber
Part Number	305-6742	305-6743
Price	\$	\$

MINI HYDRAULIC EXCAVATOR ATTACHMENTS | 2021

Cat Vibratory Plate Compactors

are for compacting soil, sand or gravel prior to pouring concrete or laying asphalt surfaces. They are also ideal for asphalt patch work. Their capabilities and lower investment and maintenance costs make them popular with pavers, general contractors as well as utility contractors in residential, commercial or industrial applications.



VIBRATORY PLATE COMPACTOR



BACKFILL BLADE

VIBRATORY PLATE COMPACTORS

MODEL	CVP16
Machine Class	2 - 6 Ton
Base Plate Width - in (mm)	12 (305)
Compaction Area - ft2 (m2)	2 (0.19)
Base Plate Length - in (mm)	24 (605)
Weight - lb (kg)	476 (905)
Required Hydraulics	First Auxiliary
Part Number	551-4956
Price	\$

HYDRAULIC LINES

MODEL	CVP16	CVP16	CVP16
Machine Class	2 Ton	3 - 4 Ton	5 - 6 Ton
Lines	203-0998	203-0977	203-0983
Price	\$	\$	\$

VIBRATORY PLATE COMPACTORS

MODEL	CVP40
Machine Class	7 - 10 Ton
Base Plate Width - in (mm)	23 (590)
Compaction Area - ft2 (m2)	6.1 (0.57)
Base Plate Length - in (mm)	38 (965)
Weight - lb (kg)	886 (402)
Required Hydraulics	First Auxiliary
Part Number	551-4957
Price	\$
Lines	490-0015
Price	\$

BACKFILL BLADE

MODEL	CVP16	CVP40
Part Number	222-6443	211-8200
Price	\$	\$

MINI HYDRAULIC EXCAVATOR ATTACHMENTS | 2021



BRACKET

Machine Class	2 Ton	3 - 4 Ton	5 - 6 Ton	7 - 9 Ton	7 - 9 Ton	PIN ON
Interface Type	Pin On	Pin On	Pin On	Pin On	Pin Lock	Pin On
Model	CVP16	CVP16	CVP16	CVP40	CVP40	CVP40
Part Number	438-7184	532-9063	569-5414	564-9840	416-8031	564-9843
Price	\$	\$	\$	\$	\$	\$



BRACKET

BRACKET

Machine Class	3 - 4 Ton	5 - 6 Ton	5 - 6 Ton	7 - 9 Ton
Interface Type	CW-05	CW-10	CW-10	CW-10
Model	CVP16	CVP16	CVP16	CVP40
Part Number	450-9815	440-3180	440-3180	415-6111
Price	\$	\$	\$	\$



SWIVEL HEAD

SWIVEL HEAD

MODEL	CVP16	CVP40
Part Number	265-7461	264-5907
Price	\$	\$



MINI HYDRAULIC EXCAVATOR ATTACHMENTS | 2021

Cat Tilt Rotate Systems for excavators

provide 360-degree rotation and 40-degree tilting action side-to-side, allowing the machine to reach more areas from a single position. The tiltrotator enables the operator to maneuver around posts, rocks, and other obstacles, as well as to more easily reach along ditch edges.



**TILTROTATOR
TRS6**

TILT ROTATE SYSTEMS - NEXT GENERATION MHE ONLY					
MODEL	TRS6	TRS6	TRS6	TRS6	TRS6
Machine Class	6 Tons	6 Ton	6 Ton	6 Ton	6 Ton
Top Interface	S-40	S-40	PO-PG	PO-PG	Pin On
Bottom Interface	S-40	S-40	S-40	S-40	Pin Grabber
Grapple	No	Yes	Yes	No	No
Overall Height - in (mm)	32 (819)	32 (819)	32 (819)	32 (819)	36 (905)
Length - in (mm)	21 (526)	24 (609)	24 (609)	21 (526)	21 (526)
Overall Width - in (mm)	19 (490)	23 (574)	23 (574)	19 (490)	19 (490)
Weight - lb (kg)	463 (210)	540 (245)	540 (245)	463 (210)	463 (210)
Part Number	585-0421	585-0422	585-0423	585-0424	585-0425
Required Hydraulics	First Auxiliary	First Auxiliary	First Auxiliary	First Auxiliary	First Auxiliary
Price	\$	\$	\$	\$	\$
Lines to Auxillary QD	585-0454	585-0454	585-0454	585-0454	585-0454
Price	\$	\$	\$	\$	\$
Kit - TRS Joystick	570-7210	570-7210	570-7210	570-7210	570-7210
Price	\$	\$	\$	\$	\$
Kit - Harness	585-0431	585-0431	585-0431	585-0431	585-0431
Price	\$	\$	\$	\$	\$

MINI HYDRAULIC EXCAVATOR ATTACHMENTS | 2021



**TILTROTATOR
TRS8**

TILT ROTATE SYSTEMS - NEXT GENERATION MHE ONLY						
MODEL	TRS8	TRS8	TRS8	TRS8	TRS8	TRS8
Machine Class	7 - 10 Ton	7 - 10 Ton	7 - 9 Ton	7 - 9 Ton	10 Ton	10 Ton
Top Interface	S-50	S-50	Pin On / Pin Grabber	Pin On / Pin Grabber	Pin On	Pin On
Bottom Interface	S-50	S-50	Pin Grabber	S-50	Pin Grabber	S-50
Grapple	Yes	No	No	No	No	No
Overall Height - in (mm)	38 (958)	37 (945)	39 (1001)	37 (947)	41 (1044)	37 (947)
Length - in (mm)	42 (1053)	24 (608)	26 (665)	25 (640)	26 (650)	25 (635)
Overall Width - in (mm)	27 (678)	27 (678)	27 (678)	27 (678)	27 (678)	27 (678)
Weight - lb (kg)	794 (360)	683 (310)	683 (310)	683 (310)	683 (310)	683 (310)
Part Number	570-7120	570-7121	570-7122	570-7124	570-7123	570-7125
Required Hydraulics	First Auxiliary	First Auxiliary	First Auxiliary	First Auxiliary	First Auxiliary	First Auxiliary
Price	\$	\$	\$	\$	\$	\$
Lines to Auxillary QD	577-1587	577-1587	577-1587	577-1587	577-1587	577-1587
Price	\$	\$	\$	\$	\$	\$
Kit - TRS Joystick	570-7210	570-7210	570-7210	570-7210	570-7210	570-7210
Price	\$	\$	\$	\$	\$	\$
Kit - Harness	577-1565	577-1565	577-1565	577-1565	577-1565	577-1565
Price	\$	\$	\$	\$	\$	\$

MINI HYDRAULIC EXCAVATOR ATTACHMENTS | 2021

MINI HYDRAULIC EXCAVATOR ATTACHMENTS | 2021

Cat Skid Steer Adapters allow connecting to certain recommended Skid Steer Interface type attachments. Adapters are available for both Mini Hydraulic Excavators and Compact Wheel Loaders, to allow sharing of tools across different machine familie.



**ADAPTERS
SSL TO MHE**

	ADAPTERS - SSL TO MHE		PIN ON
	3 - 4 Ton	5 - 6 Ton	7 - 9 Ton
Machine Class	3 - 4 Ton	5 - 6 Ton	7 - 9 Ton
Height - in (mm)	20 (505)	22 (557)	22 (557)
Width - in (mm)	44 (1125)	44 (1125)	44 (1125)
Length - in (mm)	18 (463)	19 (476)	20 (505)
Weight - lb (kg)	247 (112)	262 (119)	311 (141)
Interface type	Pin On	Pin On	Pin On
Coupler Type	SSL Coupler	SSL Coupler	SSL Coupler
Part Number	525-5854	542-7262	542-7263
Price	\$	\$	\$



**GENERAL PURPOSE BUCKETS
WITH BOLT-ON CUTTING EDGE**

	GENERAL PURPOSE BUCKETS WITH BOLT-ON CUTTING EDGE					SSL
	62 (1576)	68 (1730)	74 (1883)	80 (2036)	86 (2188)	
Width - in (mm)	62 (1576)	68 (1730)	74 (1883)	80 (2036)	86 (2188)	
Capacity - yd3 (m3)	0.5 (0.36)	0.5 (0.4)	0.6 (0.44)	0.6 (0.48)	0.8 (0.63)	
Height - in (mm)	17 (426)	17 (426)	17 (426)	17 (426)	19 (469)	
Length - in (mm)	28 (708)	28 (708)	28 (708)	28 (708)	31 (797)	
Weight - lb (kg)	441 (200)	551 (250)	598 (271)	631 (286)	723 (328)	
Part Number	279-5365	279-5369*	279-5373*	279-5377**	296-8192**	
Price	\$	\$	\$	\$	\$	



**GENERAL PURPOSE BUCKETS
WITH BOLT-ON TEETH**

	GENERAL PURPOSE BUCKETS WITH BOLT-ON TEETH					SSL
	62 (1576)	68 (1730)	74 (1883)	80 (2036)	86 (2188)	
Width - in (mm)	62 (1576)	68 (1730)	74 (1883)	80 (2036)	86 (2188)	
Capacity - yd3 (m3)	0.5 (0.36)	0.5 (0.4)	0.6 (0.44)	0.6 (0.48)	0.8 (0.63)	
Height - in (mm)	17 (426)	17 (426)	17 (426)	17 (426)	19 (469)	
Length - in (mm)	28 (708)	28 (708)	28 (708)	28 (708)	31 (797)	
Weight - lb (kg)	408 (185)	509 (231)	549 (249)	582 (264)	670 (304)	
Part Number	279-5366	279-5370*	279-5374*	279-5378**	296-8191**	
Price	\$	\$	\$	\$	\$	

Buckets approved for use with SSL interface adapter

COMPATIBLE

* 5-6 Tons and up
** 7-9 Tons and up

XTC ATTACHMENTS (SSL INTERFACE)

MULTIPURPOSE BUCKET WITH BOLT-ON CUTTING EDGE SSL

Width - in (mm)	80 (2036)
Capacity - yd3 (m3)	0.5 (0.4)
Height - in (mm)	15 (388)
Length - in (mm)	29 (724)
Weight - lb (kg)	1016 (461)
Part Number	426-6548
Price	\$

GENERAL PURPOSE BUCKET WITH BOLT-ON CUTTING EDGE SSL

Width - in (mm)	80 (2036)
Capacity - yd3 (m3)	0.6 (0.48)
Height - in (mm)	17 (426)
Length - in (mm)	28 (708)
Weight - lb (kg)	631 (286)
Part Number	279-5377
Price	\$

BLADE WITH WELD-ON CUTTING EDGE SSL

Width - in (mm)	80 (2030)
Height - in (mm)	24 (610)
Part Number	487-2025
Price	\$

ANGLE BLADE SSL

Overall Width - in (mm)	87 (2198)
Width Fully Angled - in (mm)	77 (1949)
Length - in (mm)	30 (753)
Weight - lb (kg)	730 (331)
Required Hydraulics	Std Flow
Part Number	177-1990
Price	\$

XTC MACHINE ATTACHMENTS MACHINE SETUP

Attachment	Attachment Model	MACHINE SETUP	
		1-way-flow	2-way-flow
Skid Steer Loader	SSL		
Multi-Purpose Buckets			✓
Angle Blade			✓
Trencher (legacy/current)	T9B/T112		✓
Power Box Rake (legacy/current)	PR172/PR118		✓
Angle Brooms	BA118		✓



**MULTI PURPOSE BUCKET
WITH BOLT-ON CUTTING EDGE**



**GENERAL PURPOSE BUCKET
WITH BOLT-ON CUTTING EDGE**



ANGLE BLADE

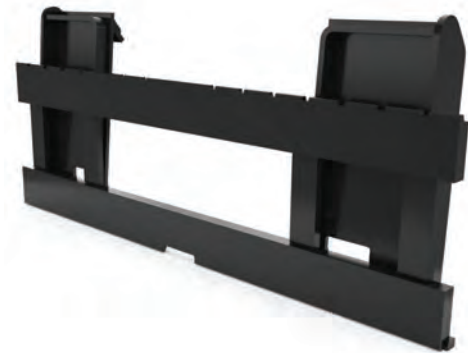
MINI HYDRAULIC EXCAVATOR ATTACHMENTS | 2021

MINI HYDRAULIC EXCAVATOR ATTACHMENTS | 2021

XTC ATTACHMENTS (SSL INTERFACE)



BUCKET-MP BOLT-ON CUTTING EDGE		SSL
Width - in (mm)	74 (1833)	
Capacity - yd3 (m3)	.48 (.37)	
Height - in (mm)	15 (388)	
Length - in (mm)	29 (724)	
Weight - lb (kg)	961 (436)	
Part Number	426-6536	
Price	\$	



PALLET FORK CARRIAGE		SSL
Width - in (mm)	55 (1400)	
Max Tine Spacing - in (mm)	46 (1176)	
Height - in (mm)	22 (550)	
Length - in (mm)	6 (143)	
Weight - lb (kg)	249 (113)	
Part Number	261-1350	
Price	\$	

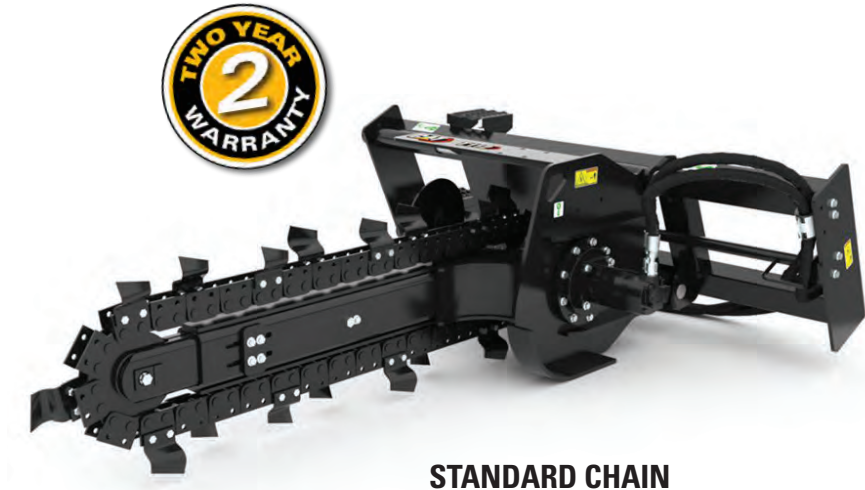


PALLET FORK CARRIAGE		SSL
Width - in (mm)	50 (1270)	
Max Tine Spacing - in (mm)	40 (1008)	
Height - in (mm)	36 (912)	
Length - in (mm)	10 (261)	
Weight - lb (kg)	207 (94)	
Part Number	351-9371	
Price	\$	



PALLET FORK		SSL
Width - in (mm)	4 (100)	
Tine Thickness - in (mm)	1.6 (40)	
Height - in (mm)	21 (541)	
Length - in (mm)	42 (1070)	
Weight - lb (kg)	104 (47)	
Part Number	195-6942	
Price	\$	

TRENCHERS	SSL
MODEL - Current	T9B
MODEL - Future	T112
Side Shift Control	Manual
Cutting Width - in (mm)	6 (152)
Overall Width - in (mm)	75 (1901)
Overall Length - in (mm)	107 (2705)
Overall Height - in (mm)	31 (786)
Side Shift Travel - in (mm)	22 (559)
Standard Boom Length - in (mm)	48 (1219)
*Weight - lb (kg)	1076 (488)
Required Hydraulics	Std Flow
Part Number w/Standard Chain	233-2346
Price	\$



STANDARD CHAIN

ANGLE BROOMS	SSL
MODEL - Current	BA118C
MODEL - Future	BA118
Width - in (mm)	104 (2637)
Sweeping Width - in (mm)	83 (2119)
Height - in (mm)	36 (918)
Length - in (mm)	69 (1741)
Weight - lb (kg)	906 (411)
Required Hydraulics	Std Flow
Angling	Manual
Part Number	448-5660
Price	\$



ANGLE BROOMS

POWER BOX RAKES	SSL
MODEL - Current	PR172
MODEL - Future	PR118
Angle Control	Manual
Overall Width - in (mm)	81 (2057)
Raking Width at Max Angle - in (mm)	68 (1727)
Overall Height - in (mm)	33 (847)
Weight - lb (kg)	900 (408)
Required Hydraulics	Std Flow
Part Number	277-8210
Price	\$



POWER BOX RAKES

